

FAST-RING

Connection for attaching a tube to an existing tube



FAST-RING

Description

- 100% nylon polyamide 6.
- Colour: grey.

Product benefits

- Quick and easy: connect a new conduit directly to the existing conduit without having to drill any holes.
- Perfectly straight.
- Made in France.

Uses

- Connect an electrical conduit to an existing conduit.

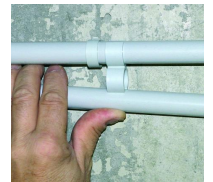
Homologations



CE



FAST-RING - vue en situation



FAST-RING - clipsage

Références produits

DÉSIGNATION	RÉFÉRENCE	CONDT	SURCONDT	DIAMETER
FAST-RING 16-16 Bte de 100	A312100	Boîte de 100	16 boîtes	16 - 16
FAST-RING 20-20 Bte de 100	A312150	Boîte de 100	16 boîtes	20 - 20
FAST-RING 16-16 Sachet de 10	A854010	Sachet de 10	10 Sachets	16 - 16
FAST-RING 20-20 Sachet de 10	A854020	Sachet de 10	10 Sachets	20 - 20