

Nylon wall plug

Nylon wall plug suitable for all materials

Description

- Nylon wall plug suitable for all materials.
- Optimum hold in solid materials.
- Available with a collar Ø 6 or Ø 8.

Product benefits

- Anti-rotation lugs: the wall plug does not rotate while it is being secured.
- Excellent resistance to changes in temperature: -40°C to 80°C.

Materials



Concrete



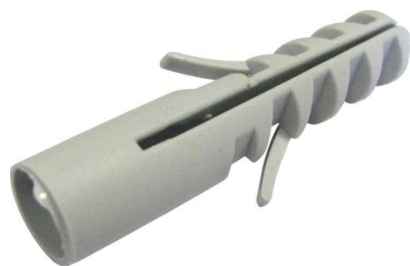
Solid breeze block /
Stone



Solid
brick



Breeze block Hollow Brick



Cheville nylon



Cheville nylon



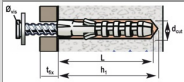
Cheville nylon à collerette

Références produits

| DÉSIGNATION | RÉFÉRENCE | CONDT | SURCONDIT | DIAMETER | LENGTH |
|--|-----------|--------------|-----------|----------|--------|
| CHEVILLE NYLON ING D 4 Bte de 200 xxx | A170065 | Boîte de 200 | Aucun | 4 mm | 20 mm |
| CHEVILLE NYLON ING D 5 Bte de 100 | A170070 | Boîte de 100 | Aucun | 5 mm | 25 mm |
| CHEVILLE NYLON ING D 6 Bte de 100 | A170080 | Boîte de 100 | Aucun | 6 mm | 30 mm |
| CHEVILLE NYLON ING D 6 COLLERETTE Bte de 100 | A170083 | Boîte de 100 | Aucun | 6 mm | 30 mm |
| CHEVILLE NYLON ING D 7 Bte de 100 xxx | A170085 | Boîte de 100 | Aucun | 7 mm | 30 mm |
| CHEVILLE NYLON ING D 8 Bte de 100 | A170090 | Boîte de 100 | Aucun | 8 mm | 40 mm |
| CHEVILLE NYLON ING D 8 COLLERETTE Bte de 100 | A170095 | Boîte de 100 | Aucun | 8 mm | 40 mm |
| CHEVILLE NYLON ING D 10 Bte de 50 | A170100 | Boîte de 50 | Aucun | 10 mm | 50 mm |
| CHEVILLE NYLON ING D 12 Bte de 25 | A170110 | Boîte de 25 | Aucun | 12 mm | 60 mm |
| CHEVILLE NYLON ING D 14 Bte de 15 | A170120 | Boîte de 15 | Aucun | 14 mm | 75 mm |
| CHEVILLE NYLON ING D 16 Bte de 10 | A170125 | Boîte de 10 | Aucun | 16 mm | 80 mm |
| CHEVILLE NYLON D 6 Seau de 600 | A171050 | Seau de 600 | Aucun | 6 mm | 30 mm |

| DÉSIGNATION | RÉFÉRENCE | CONDT | SURCONDT | DIAMETER | LENGTH |
|-------------------------------------|-----------|--------------|------------|----------|--------|
| CHEVILLE NYLON D 7 Seau de 2500 xxx | A171090 | Seau de 2500 | Aucun | 7 mm | 30 mm |
| CHEVILLE NYLON D 8 Seau de 250 | A171110 | Seau de 250 | Aucun | 8 mm | 40 mm |
| CHEV. NYLON D 5 Sachet de 25 | A858601 | Sachet de 25 | 30 sachets | 5 mm | 25 mm |
| CHEV. NYLON D 6 Sachet de 25 | A858602 | Sachet de 25 | 30 sachets | 6 mm | 30 mm |
| CHEV. NYLON D 8 Sachet de 25 | A858604 | Sachet de 25 | 20 sachets | 8 mm | 40 mm |
| CHEV. NYLON D 10 Sachet de 25 | A858605 | Sachet de 25 | 15 sachets | 10 mm | 50 mm |
| CHEV. NYLON D 12 Sachet de 15 | A858606 | Sachet de 15 | 10 Sachets | 12 mm | 60 mm |
| CHEV. NYLON D 14 Sachet de 10 | A858607 | Sachet de 10 | 5 sachets | 14 mm | 75 mm |

Technical informations - Implementation data

|  | L PLUG LENGTH | D _{CUT} DRILLING DIAMETER | D _{VIS} SCREW DIAMETER | T _{FIX} THICKNESS MAX. | H ₁ DRILLING DEPTH | LOAD MAX. | |
|--|------------------|---------------------------------------|------------------------------------|------------------------------------|----------------------------------|------------------|-----------------|
| | | | | | | HOLLOW MATERIALS | SOLID MATERIALS |
| Ø 4 | 20 mm | 4 mm | 2 - 3 mm | 5 mm | 25 mm | 15 kg | 25 kg |
| Ø 5 | 25 mm | 5 mm | 2,5 - 4 mm | 5 mm | 35 mm | 20 kg | 30 kg |
| Ø 6 | 30 mm | 6 mm | 3,5 - 5 mm | 10 mm | 40 mm | 25 kg | 50 kg |
| Ø 7 | 30 mm | 7 mm | 4 - 5,5 mm | 10 mm | 40 mm | 30 kg | 65 kg |
| Ø 8 | 40 mm | 8 mm | 4,5 - 6 mm | 10 mm | 50 mm | 35 kg | 80 kg |
| Ø 10 | 50 mm | 10 mm | 6 - 8mm | 10 mm | 60 mm | 45 kg | 120 kg |
| Ø 12 | 60 mm | 12 mm | 8 - 10 mm | 15 mm | 70 mm | 55 kg | 150 kg |
| Ø 14 | 75 mm | 14 mm | 10 - 12 mm | 15 mm | 85 mm | 70 kg | 180 kg |
| Ø 16 | 80 mm | 16 mm | 12 - 14 mm | 15 mm | 90 mm | 80 kg | 200 kg |

Technical informations - Utilisation

