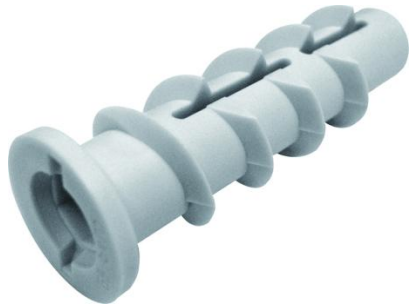


## GB wall plug

### Wall plug for aerated concrete and gypsum boards



Cheville GB

#### Description

- 100% nylon polyamide 6 wall plug for aerated concrete and gypsum boards.
- Screwing with a hex drill bit.

#### Product benefits

- Quick and easy: Installation with a screwdriver or impact driver (hex drill bit).
- Excellent resistance to changes in temperature: -40°C to +80°C.
- Can be used with threaded wood screws, metric screws or lag screws.

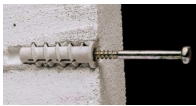
#### Uses

- Lights, wall shelving, towel rails, letter boxes, curtain rods, cable trays etc.
- All lightweight fixings in aerated concrete and gypsum board.

#### Materials



Aerated concrete

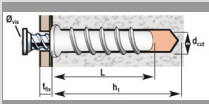


Cheville GB - vue en coupe

#### Références produits

DÉSIGNATION	RÉFÉRENCE	CONDT	SURCONDT	DIAMETER	LENGTH
CHEVILLE GB 6 X 50 Bte de 25	A170410	Boîte de 25	Aucun	M 6	50 mm
CHEVILLE GB 8 X 60 Bte de 25	A170415	Boîte de 25	Aucun	M 8	60 mm
CHEVILLE GB 10 X 70 Bte de 10	A170420	Boîte de 10	Aucun	M 10	70 mm
CHEVILLE GB M6 Sachet de 4	A853800	Sachet de 4	20 sachets	M 6	50 mm
CHEVILLE GB M8 Sachet de 4	A853805	Sachet de 4	20 sachets	M 8	60 mm
CHEVILLE GB M10 Sachet de 4 xxx	A853810	Sachet de 4	20 sachets	M 10	70 mm

#### Technical informations - Implementation data



	L PLUG LENGTH	D <sub>CUT</sub> DRILLING DIAMETER	D <sub>VIS</sub> SCREW DIAMETER	T <sub>FIX</sub> THICKNESS MAX.	H <sub>1</sub> DRILLING DEPTH	LOAD MAX.
M 6	50 mm	10 mm	M6 or Ø 5 à 6	5 mm	60 mm	15 kg
M 8	60 mm	12 mm	M8 or Ø 7 à 8	10 mm	70 mm	20 kg
M 10	70 mm	14 mm	M10 or Ø 9 à 10	10 mm	80 mm	25 kg

## Technical informations - Utilisation

