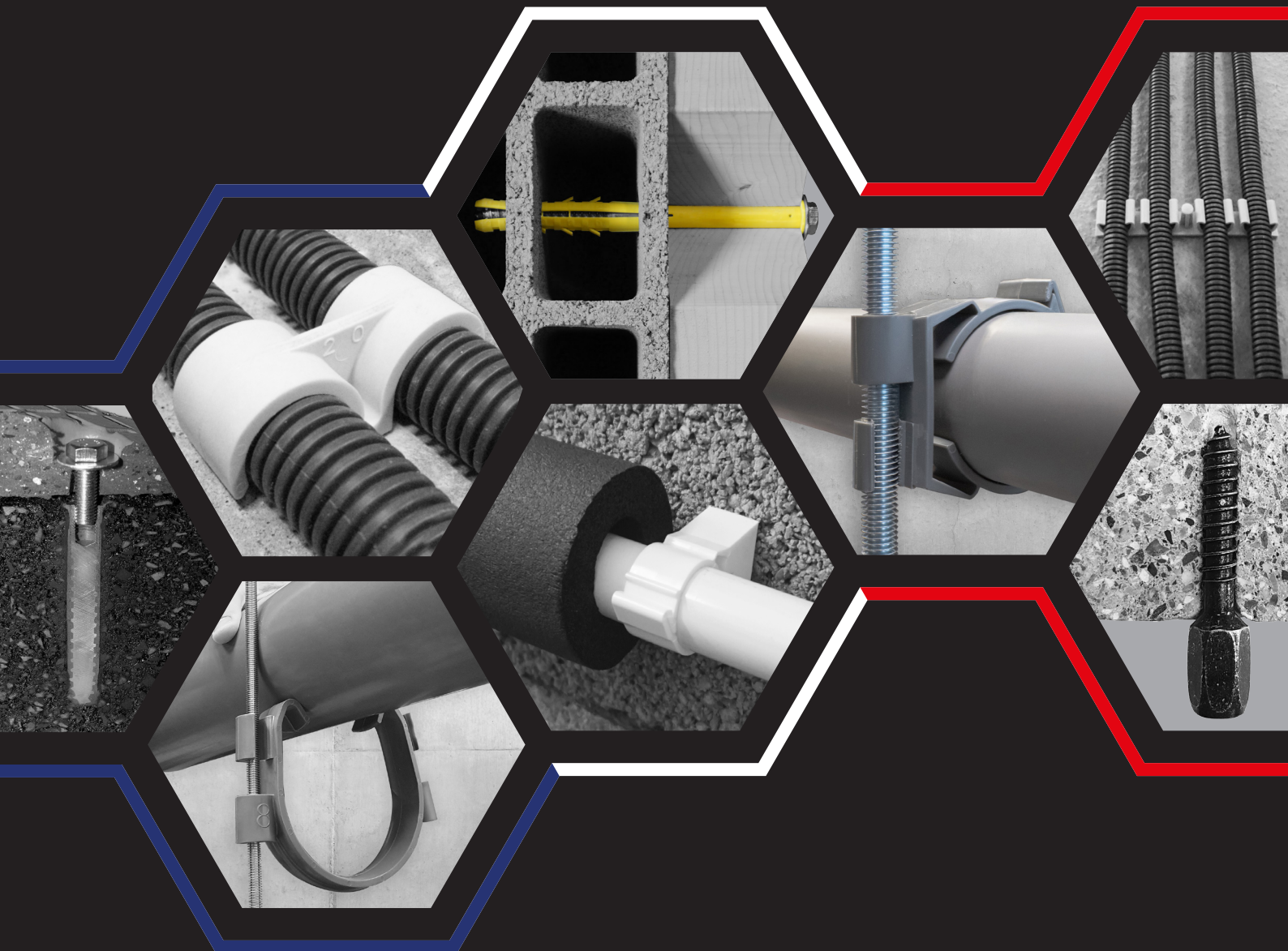


I.N.G. FIXATIONS

FRENCH INVENTOR & MANUFACTURER
SINCE 1985

GENERAL CATALOG





→ THE COMPANY

2 MANUFACTURING SITES

LE PUY-EN-VELAY (43)



SINCE
1985

MONISTROL-SUR-LOIRE (43)



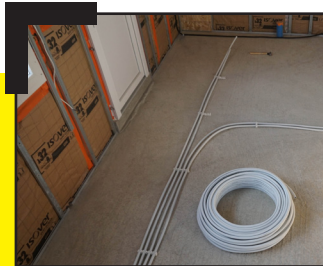
SOME NUMBERS ...

- 40 YEARS OF EXPERIENCE
- 4 000 REFERENCED PRODUCTS
- AROUND 5 000 DISTRIBUTORS
- PRODUCTS EXPORTED TO MORE THAN 15 COUNTRIES



Tested and approved on numerous construction sites!

INVENTOR & MANUFACTURER



INTERNATIONAL EXHIBITIONS FAIRS



MEMBER OF :



WEBSITE

www.ingfixations.fr



DISCOVER OUR :

- PRODUCTS
- DATA SHEET
- CATALOGS / BROCHURES
- NEWS
- OUR HISTORY

OUR INNOVATIONS

1984

SHUTTER HINGE

ING process for installing shutter hinges with resin



1985

I.N.G INSULATION HINGE

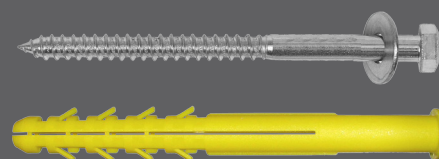
Offset hinge for shutters in the context of ETI



1986

CARPENTRY PLUG

Long plug with expansion across multiple cavities in hollow materials



2017

RAPIDO®

Threaded rod hange for direct use in concrete



2016

RAPID WASHER

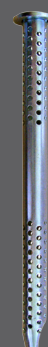
M6 threaded washer with hand-tightening



2014

CLOU RÉSINE®

Resin anchoring in hollow materials



2018

IZY 7

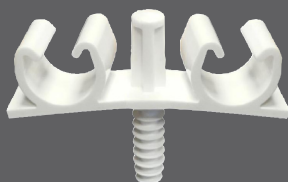
Setting tool for double threaded screw



2020

FIX-RING MULTI®

Fasteners for tubes in electrical and plumbing applications



2024

FIX-RING VS®

Clamp for securing drainpipes in crawl spaces or false ceilings



1992

RADIATOR PLUG

Radiators mounting on hollow materials with plasterboard lining + insulation



1997

FIX-RING®

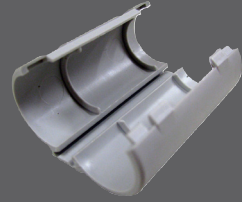
Fasteners ducts and tubes in all materials



2000

CONNECT-RING®

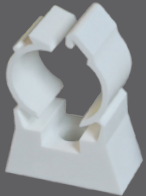
Connecting sleeve for ducts and pipes



2011

TUB-RING®

Fasteners for multilayer pipes in all materials



2007

FIX-ASPHALTE®

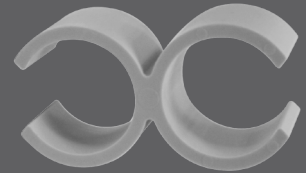
Resin anchoring for asphalt



2005

FAST-RING

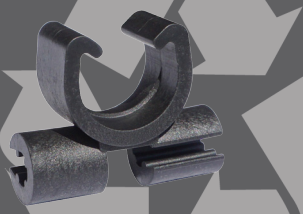
Attachment to secure a tube onto an existing one



2024

FIX-RING STEEL®

Duct fastening on wire mesh or threaded rods



MADE FROM 100% RECYCLED MATERIAL

2024

ETI BLOCK

Offset hinge brackets for shutters in ETI

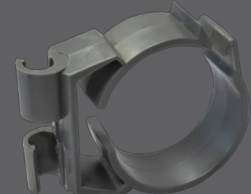


MADE FROM 100% RECYCLED MATERIAL

2025











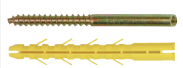










TWIST CLAMP

Fastener system for securing ducts and pipes to threaded rods


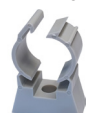






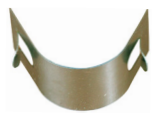






SUMMARY

PLUMBER

FIX-RING®  Page 7	TUB-RING®  Page 8	FIX-RING MULTI®  Page 9	FIX-RING VS®  Page 10	FIX-RING STEEL®  Page 11	TWIST CLAMP  Page 12
WATER HEATER MOUNTING  Page 13	WALL MOUNTED BOILER FIXING  Page 14	M6-M8 UNIVERSAL FIXING  Page 14	CAST IRON RADIATOR FIXING  Page 15	OUTDOOR TAP FIXING  Page 16	IZY 6 - 7 - 8 - 10  Page 16
FEMALE RENOVATION SCREW ANCHOR  Page 16	FIX-RING CLIM®  Page 17	TWIST CLIM CLAMP  Page 17	AIR CONDITIONING BRACKET  Page 18	SILENT BLOCK  Page 18	FIXING KIT FOR AIR CONDITIONING BRACKET  Page 19
FIXING FOR INSULATION AIR CONDITIONING  Page 19	RAPIDO®  Page 20	CONNECTOR FITTING  Page 20			

ELECTRICITY

FIX-RING®  Page 21	RAPID-TUB  Page 22	FIX-RING MULTI®  Page 23	FIX-RING STEEL®  Page 24	FIX-RING +®  Page 25	FIX-RING ELEC®  Page 25
FAST-RING  Page 25	CONNECT-RING®  Page 26	ECO-RING  Page 26	STOP-RING  Page 27	CLOU-ELEC  Page 27	FIX-ELEC®  Page 28
FIX-TUB ELEC  Page 28	PRATICO  Page 28				

SUMMARY

FASTENER

CQLT PLUG



Page 29

CQLT-R PLUG



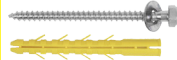
Page 29

CQLV PLUG



Page 29

FRAME FIXING



Page 30

CARPENTER PLUG



Page 30

CONCRETE SCREWS CAP



Page 31

TOP-ROC CAP



Page 31

THROUGH PLUG



Page 31

HEADLESS SCREW



Page 32

HANDRAIL SUPPORT FASTENING



Page 32

RAINWATER DOWNPIPE FASTENING



Page 33

FIX-CÂBLE



Page 33

EXTERNAL THERMAL INSULATION BLOCK



Page 34

ISOL-FIX®



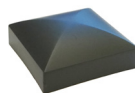
Page 35

COLOMM BASE WITH CORE AND GUSSETS



Page 35

CAP FOR WOODEN POST



Page 35

SHUTTER HINGE HOLLOW BLOCK



Page 36

SHUTTER HINGE CONCRETE



Page 36

SHUTTER HINGE STAINLESS STEEL A4



Page 36

GATE PIVOT WITH RESIN



Page 37

CLOU RÉSINE®



Page 37

FIX-STORE



Page 38

FIX-ASPALTE®



Page 38

A4 STAINLESS STEEL DOUBLE-THREADED



Page 39

METAL SLEEVE



Page 39

NYLON SLEEVE



Page 39

CENTRALISER



Page 39

RESIN CLIP



Page 39

FEMALE RENOVATION SCREW ANCHOR



Page 40

SPEEDY-FIX®



Page 41

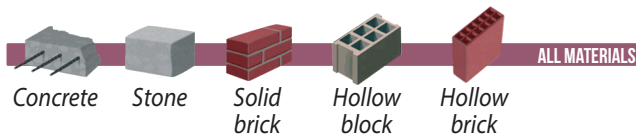
RAPID WASHER + TOGGLE M6



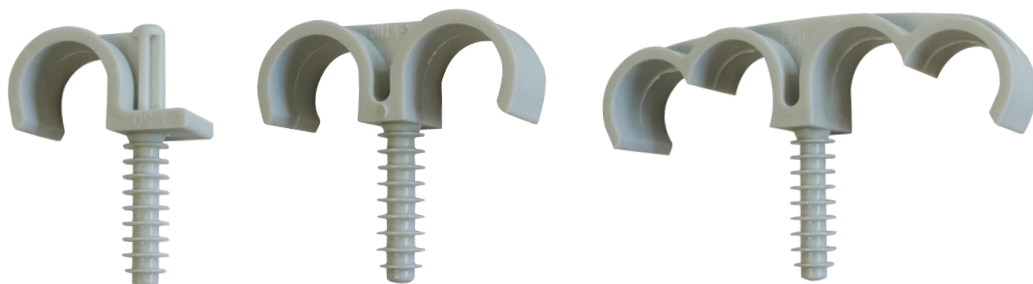
Page 41

PLUMBER

FIX-RING® - FASTENING SYSTEM FOR DUCTS AND PIPES



The original since 1997!




Ø 8 mm
Ø 10 mm : FIX-RING® DOUBLE Ø 40 & 45



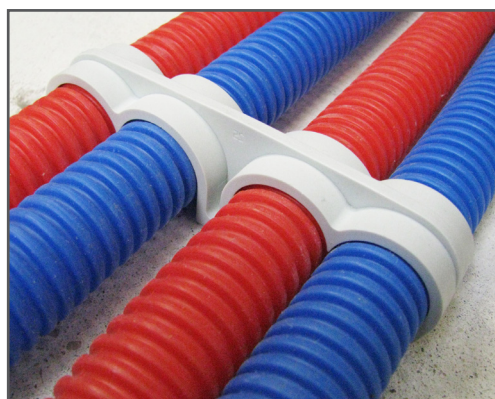
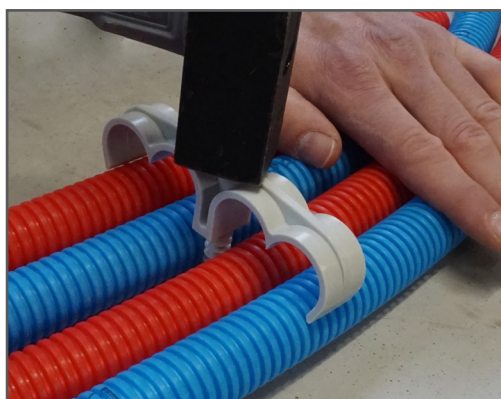
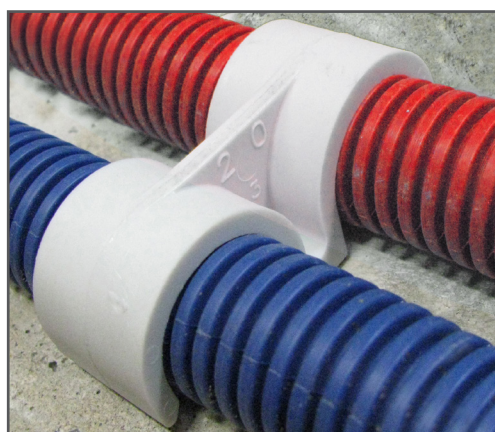
CHARACTERISTICS :

- ▶ Drill, hammer, done !
- ▶ Reinforced strike zone
- ▶ 100 % nylon - Polyamide 6

Registered design

Version	Ø (mm)
Simple	14
	16
	18
	20
	22
	25
	28
Double	32
	16
	18
	20
	22
	25
	28
Quadruple	40
	45
	20 - 22
	25 - 26

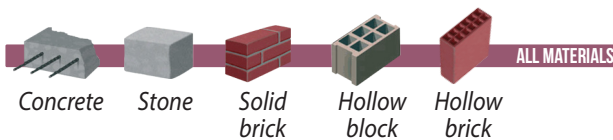
Ø 40 & Ø 45
for insulated multilayer pipes



CUSTOM'S CODE : 39269097

PLUMBER

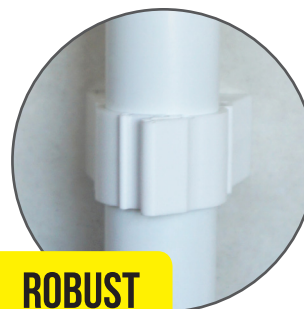
TUB-RING® - FASTENING SYSTEM FOR MULTI LAYER PIPES



Version	Ø (mm)
Simple	15 - 16
	20
	25 - 26
	32
Double	15 - 16
	20
	25 - 26

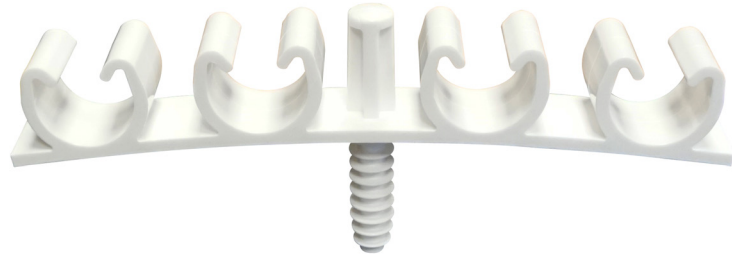
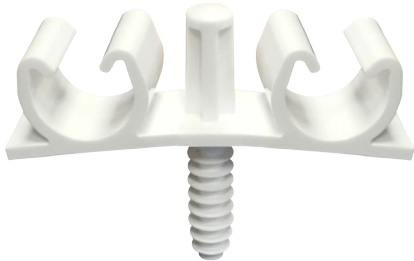
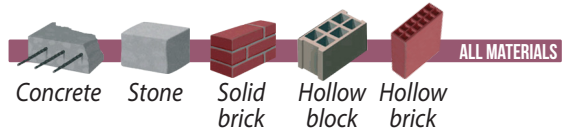
CHARACTERISTICS :

- ▶ Screw it, click it, it's done !
- ▶ Sustainability and safety: does not open
- ▶ Can be re-opened with a screwdriver
- ▶ 100 % nylon - Polyamide 6



CUSTOM'S CODE : 39269097

FIX-RING MULTI[®] - FASTENING SYSTEM FOR DUCTS AND PIPES



CHARACTERISTICS :

- ▶ Drill, hammer and clip the tube with the foot
- ▶ Reinforced strike zone
- ▶ 100 % nylon - Polyamide 6


Ø 8 mm : 16 TO 20
Ø 10 mm : 22 TO 26

Multi-diameter

A single product for different diameters!



Version	Ø (mm)
Double	16 to 20
	22 to 26
Quadruple	16 to 20
	22 to 26



CUSTOM'S CODE : 39269097

PLUMBER

FIX-RING VS® - CLAMP FOR SECURING DRAINAGE PIPES IN CRAWL SPACES OR FALSE CEILINGS



sectional view



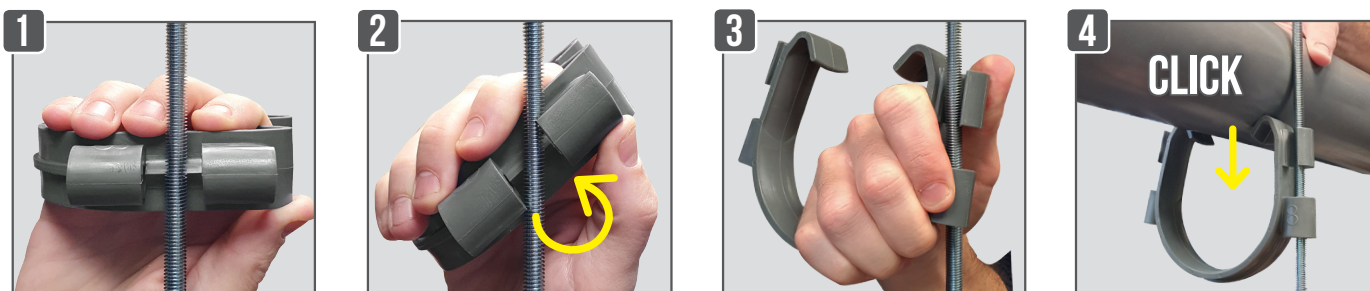
Version
Ø 100
Ø 110



Fire reaction
Polyamide UL94-V2

CHARACTERISTICS :

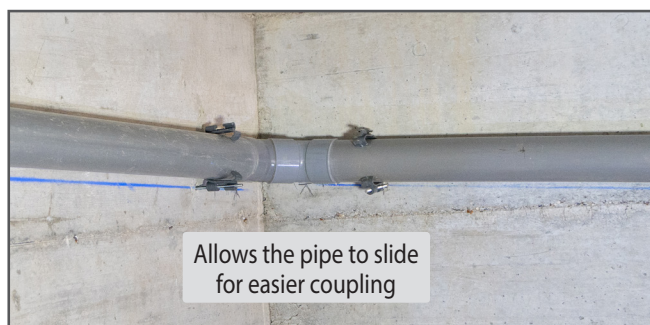
- Quick and easy installation !



VERTICAL INSTALLATION



HORIZONTAL INSTALLATION



Allows the pipe to slide
for easier coupling



Slope adjustment by
screwing and unscrewing



CUSTOM'S CODE : 39269097

PLUMBER

FIX-RING STEEL[®] - INSTALLATION ON WELDED MESH OR THREADED ROD



For **M6** threaded rod and welded mesh **Ø 6** :

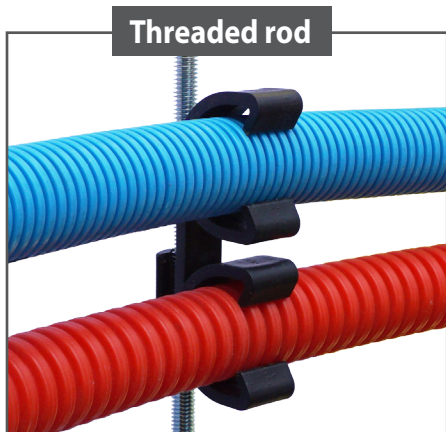
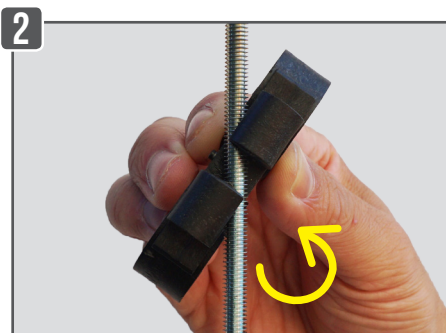
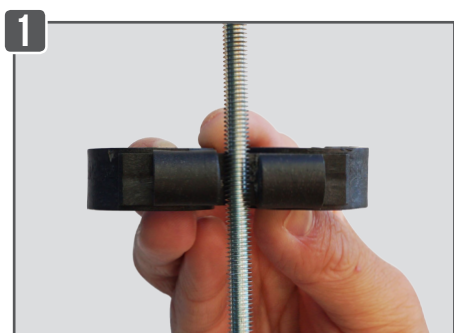
Version	Ø (mm)
Simple	16
	20
	22
Double	20
	22
	25

For **M8** threaded rod and welded mesh **Ø 8** :

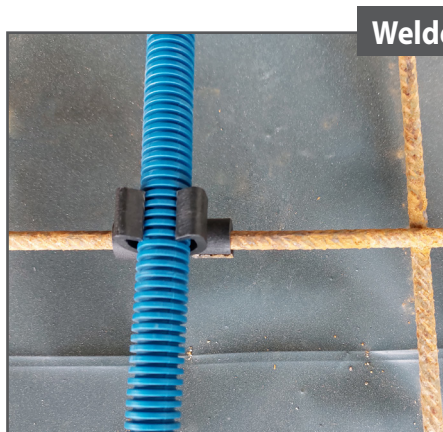
Version	Ø (mm)
Double	20
	22
	25

CHARACTERISTICS :

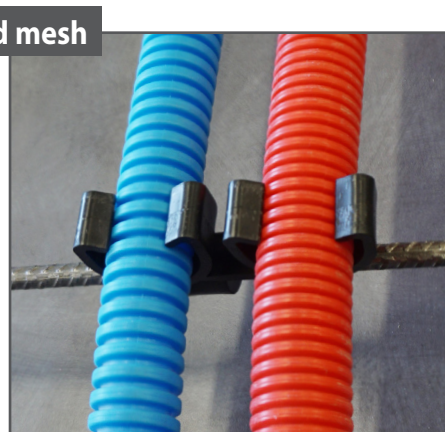
- ▶ Quick and easy installation : clip the fastening on the welded mesh or threaded rod, it is fixed !
- ▶ Installation on the floor or in a false ceiling
- ▶ 2 versions : M6 & M8
- ▶ 100 % nylon - Recycled polypropylene



Threaded rod



Welded mesh

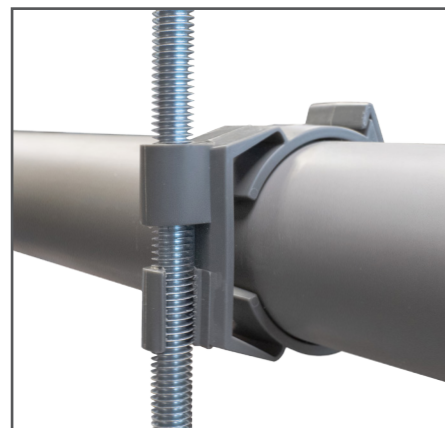


CUSTOM'S CODE : 39269097

TWIST CLAMP - ON THREADED ROD M8



Ø 32
Ø 40
Ø 50



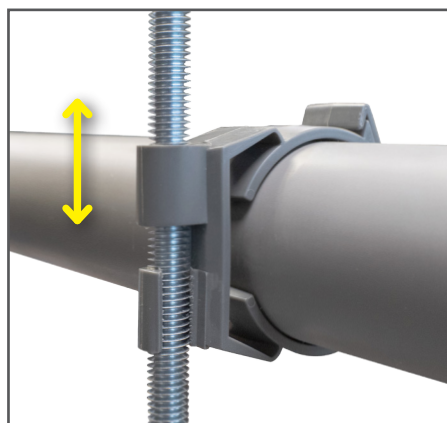
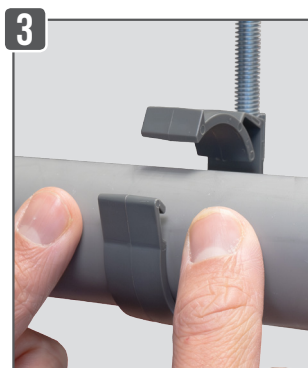
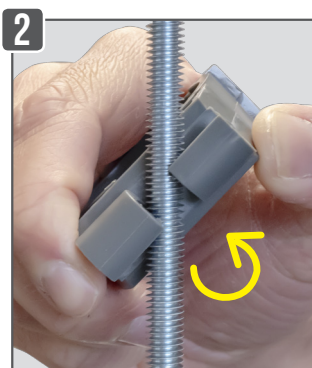
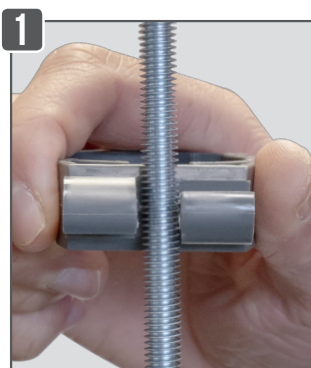
CHARACTERISTICS :

► Quick and easy installation : clip the clamp onto the M8 threaded rod, place the pipe into the clamp, and it's secured



Fire Reaction
Polyamide UL94-V2

Ø (mm)
32
40
50



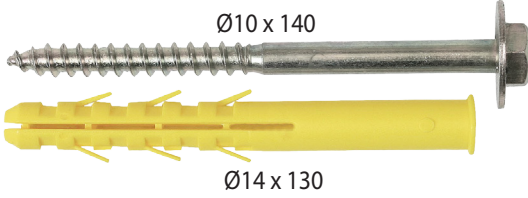
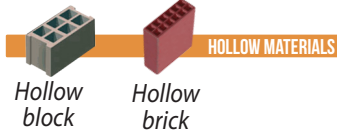
**Adjustability by
screwing/unscrewing**

CUSTOM'S CODE : 39269097

PLUMBER

WATER HEATER MOUNTING

DIRECTLY ON CONCRETE BLOCK OR BRICK

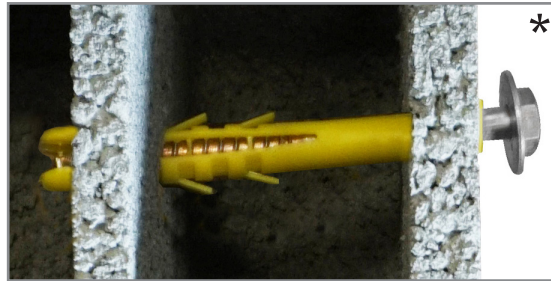


Ø (mm)	Lg. (mm)
14	130

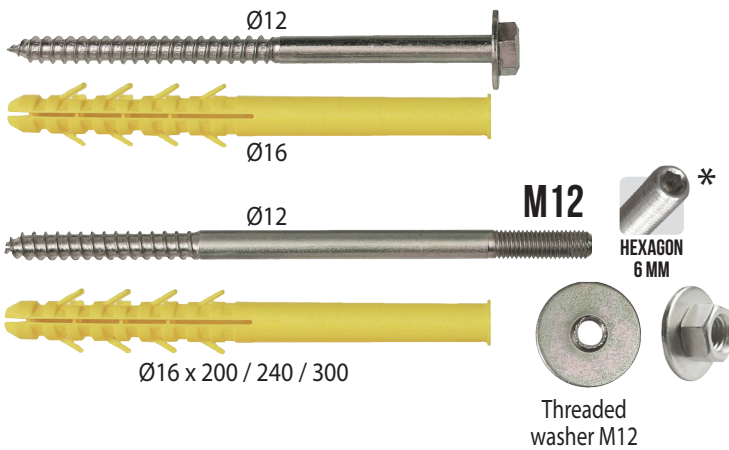
CHARACTERISTICS :

- ▶ Expansion across multiple cavities of the support
- ▶ Wall plug 100% nylon - Polyamide 6

USING ADVICE :
* Tilt the fastening at an angle for better resistance



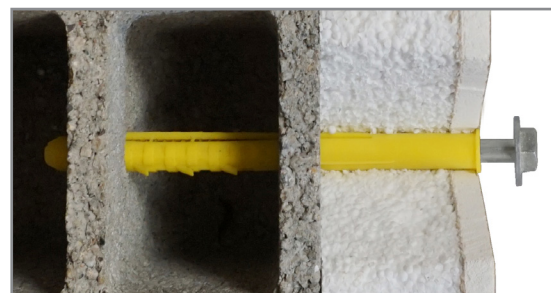
WITH LINING (INSULATION + PLASTERBOARD)



Ø (mm)	Lg. (mm)
16	200
	240
	300

CHARACTERISTICS :

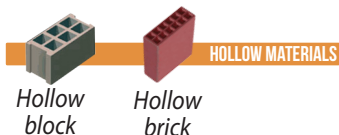
- ▶ Expansion across multiple cavities of the support
- ▶ Wall plug 100% nylon - Polyamide 6
- ▶ Does not crush the partition



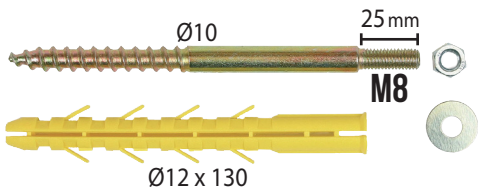
CUSTOM'S CODE : 73181100

PLUMBER

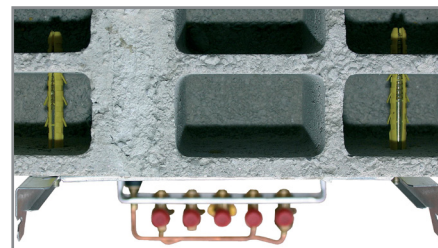
WALL MOUNTED BOILER FIXING



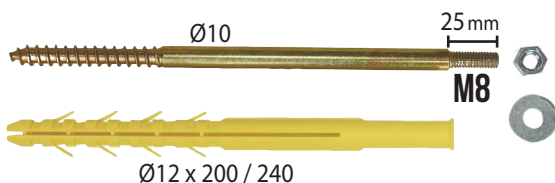
DIRECT ON CONCRETE OR BRICK



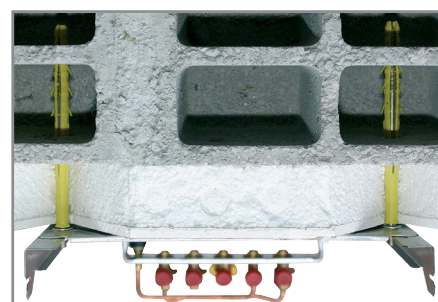
Ø (mm)	Lg. (mm)
12	130



WITH LINING (INSULATION + PLASTERBOARD)

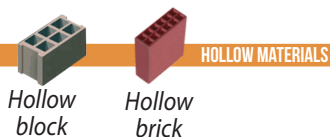


Ø (mm)	Lg. (mm)
12	200
	240

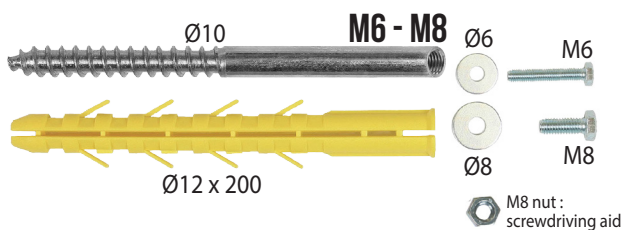


CUSTOM'S CODE : 73181290

M6-M8 UNIVERSAL FIXING



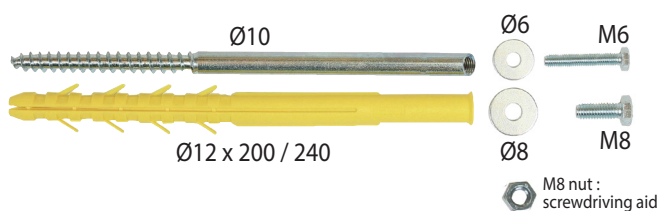
DIRECT ON CONCRETE OR BRICK



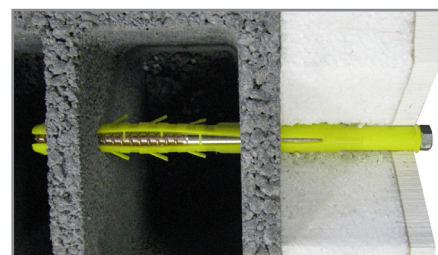
Ø (mm)	Lg. (mm)
12	130



WITH LINING (INSULATION + PLASTERBOARD)



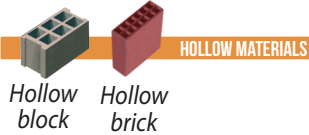
Ø (mm)	Lg. (mm)
12	200
	240



CUSTOM'S CODE : 39269097

PLUMBER

CAST IRON RADIATOR FIXING

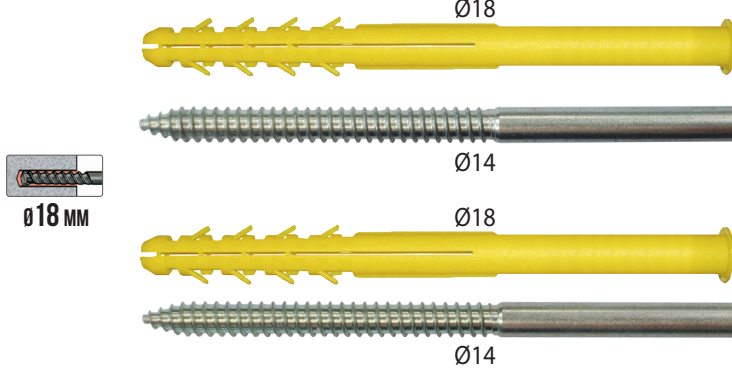


WITH LINING (INSULATION + PLASTERBOARD)



COMPLETE KIT

x 2 UPPER FIXING - INCLUDING ONE ADJUSTABLE

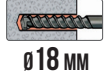


ADJUSTABLE ROD

The screw allows to go up or down

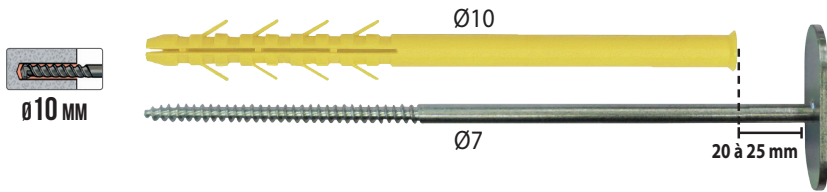
Hexagon footprint of 3

HEXAGON FOOTPRINT OF 6

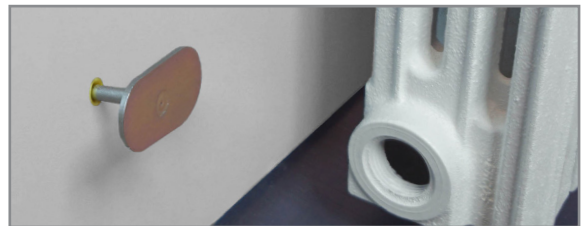
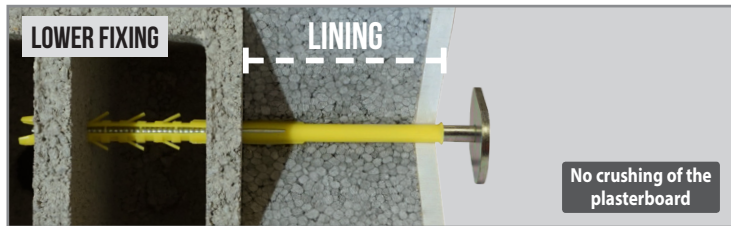
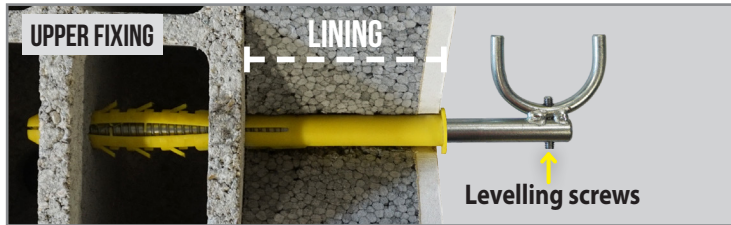


Ø18 mm

x 2 LOWER FIXING



Ø10 mm



CHARACTERISTICS :

- ▶ For old walls or walls with lining
- ▶ Expansion across multiple cavities of the concrete block or brick: strong hold!

For radiator of 100 mm

Ø (mm)	L (mm)	Thickness insulation (mm)
18	160	Old wall
	200	70
	240	110
	300	170

For radiator of 150 mm (longer stem)

Ø (mm)	L (mm)	Thickness insulation (mm)
18	160	Old wall
	200	70
	240	110
	300	170

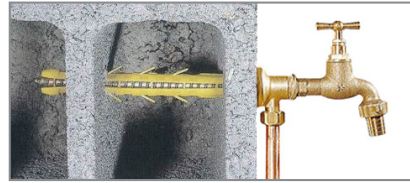
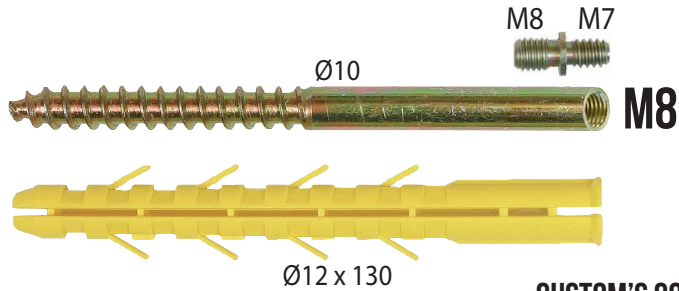
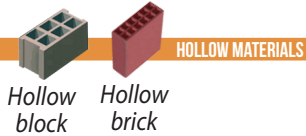


CUSTOM'S CODE : 39269097

PLUMBER

OUTDOOR TAP FIXING

DIRECT ON CONCRETE BLOCK OR BRICK



Ø (mm)	Lg. (mm)
12	130

CUSTOM'S CODE : 73181290

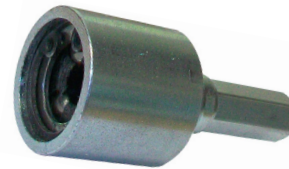
IZY 6 - 7 - 8 - 10 - SCREWING TOOL



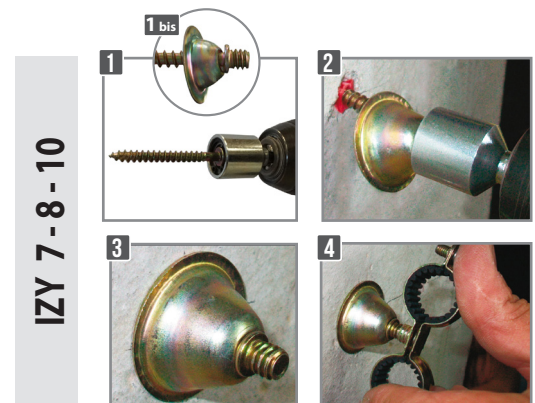
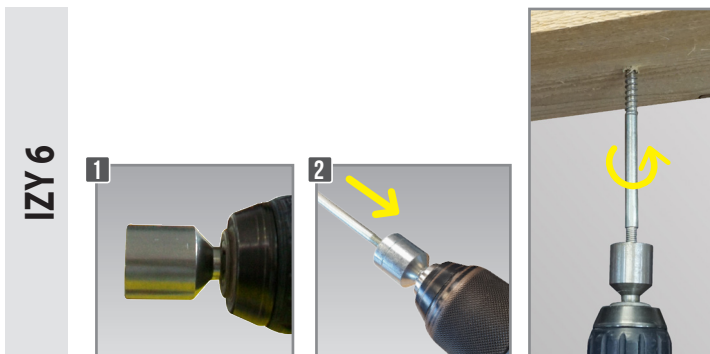
IZY 6 : screwing tool for M6 threaded rod
IZY 7 - 8 - 10 : screwing tool for M7, M8 and M10 double threaded screw

CHARACTERISTICS :

- ▶ Allows screwing and unscrewing
- ▶ Facilitates installation and time saving
- ▶ Does not damage the thread

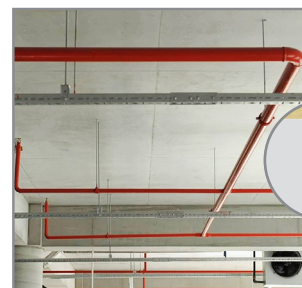


Version
IZY 6
IZY 7
IZY 8
IZY 10



CUSTOM'S CODE : 82055980

FEMALE RENOVATION SCREW ANCHOR - DIRECT TO WOOD

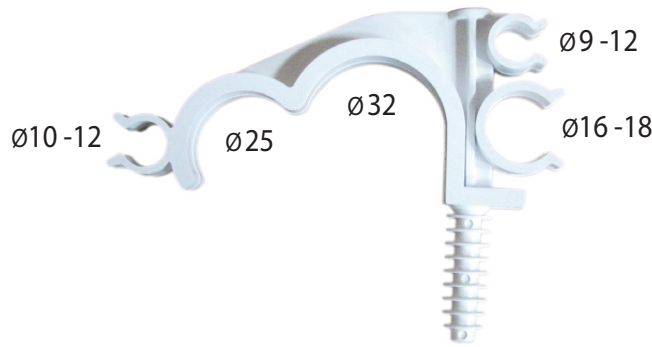
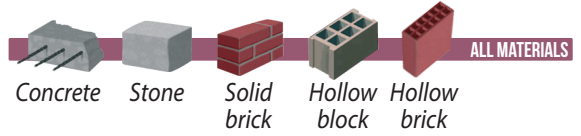


Version
M10

CUSTOM'S CODE : 7318130090

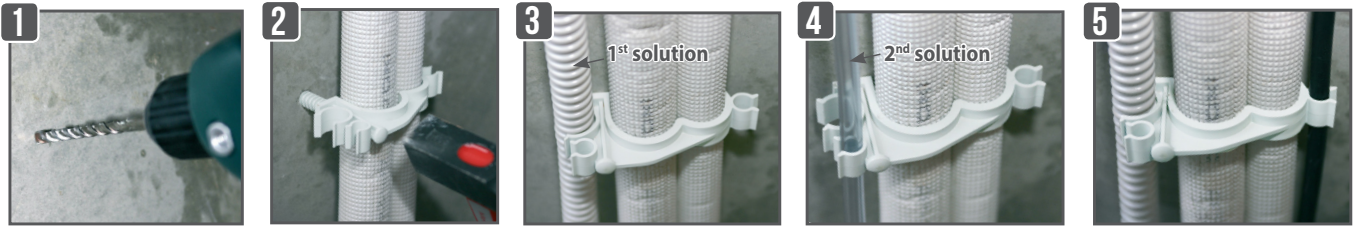
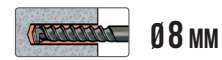
PLUMBER

FIX-RING CLIM[®] - FASTENER FOR AIR CONDITIONING DUCTS



CHARACTERISTICS :

- ▶ Quick and easy installation : drill, hit, it's fixed !
- ▶ Reinforced strike zone



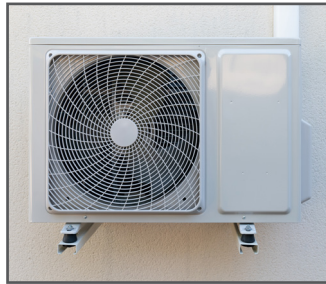
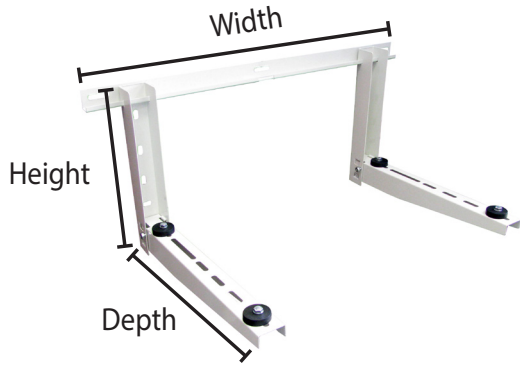
CUSTOM'S CODE : 39269097

TWIST CLIM CLAMP



CUSTOM'S CODE : 39269097

AIR CONDITIONING BRACKET



W x H x D	Thickness	Load max.
78 x 35 x 43	1,2 mm	95 kg
78 x 35 x 43	1,5 mm	115 kg
85 x 40 x 45	1,5 mm	120 kg



SILENT BLOCK PROVIDED

CHARACTERISTICS :

- ▶ To prevent noise caused by vibrations !

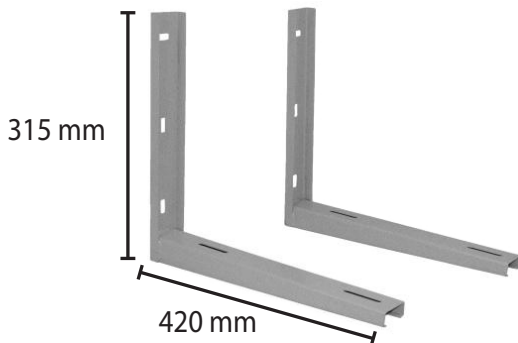


CHARACTERISTICS :

- ▶ Steel galvanized finish white epoxy paint
- ▶ Adjustable air conditioning bracket

CUSTOM'S CODE : 721691800

AIR CONDITIONING BRACKET WELDED



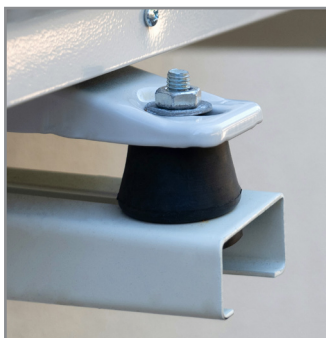
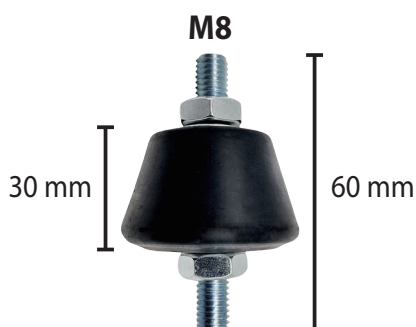
Finition	Load max.
Epoxy Beige	150 kg
Galanize	

CHARACTERISTICS :

- ▶ Corrosion-resistant !

CUSTOM'S CODE : 721691800

SILENT BLOCK



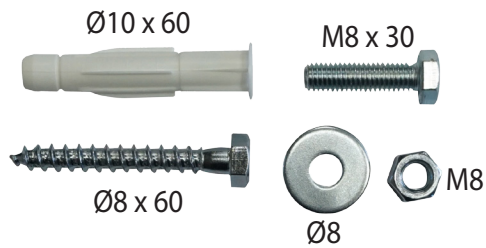
CHARACTERISTICS :

- ▶ To prevent noise caused by vibrations !

CUSTOM'S CODE : 4016991090

PLUMBER

FIXING KIT FOR AIR CONDITIONING BRACKET

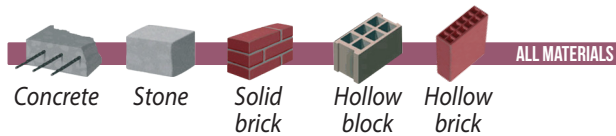


Finish
Zinc
A2 stainless steel
Galvanized

CUSTOM'S CODE : 73181100

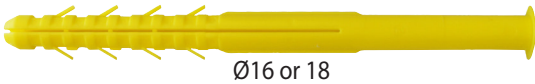
EXTERNAL INSULATION

FIXING FOR INSULATION AIR CONDITIONING

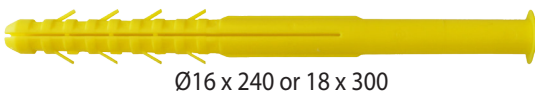


ZINC

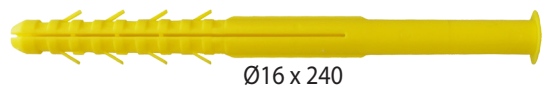
Threaded washer prevents crushing of the insulation



Threaded washer prevents crushing of the insulation



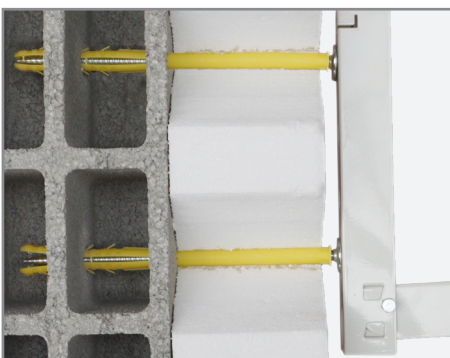
STAINLESS STEEL A4



Ø (mm)	Lg. (mm)
16	240
18	300



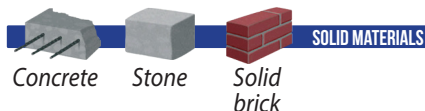
Ø (mm)	Lg. (mm)
16	240



CUSTOM'S CODE : 73181290

PLUMBER

RAPIDO® - DIRECT CONCRETE FASTENING



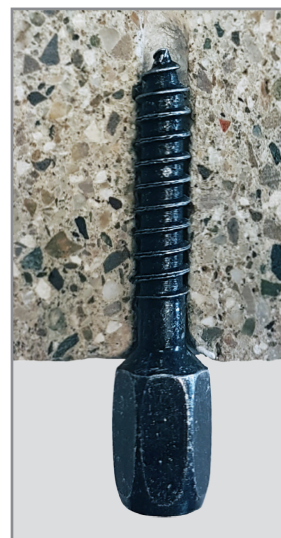
M6 : pending approval

CHARACTERISTICS :

- ▶ No plug : direct screwing into concrete
- ▶ Hammer not allowed : use a normal screwdriver
- ▶ Weighted load with safety coefficient of 3 : **90 kg**



Version
M6
M8
M7



CUSTOM'S CODE : 7318130090

CONNECTOR FITTING

MALE / MALE

M6 / M8

Thread (mm)
Male M6 / Male M8
Male M8 / Male M8



M7

Thread (mm)
Male M6 / Mâle M7
Male M7 / Male M7
Male M7 / Male M8

MALE / FEMALE

M6 / M8

Thread (mm)
Male M10 / Female M8
Male M8 lg 15 / Female M6



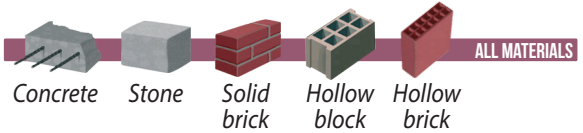
M7

Thread (mm)
Male M7 / Female M6
Male M7 / Female M8
Male M8 / Female M7
Male M8 lg 15 / Female M7 (for isophonic collars)
Male M10 / Female M7

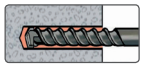
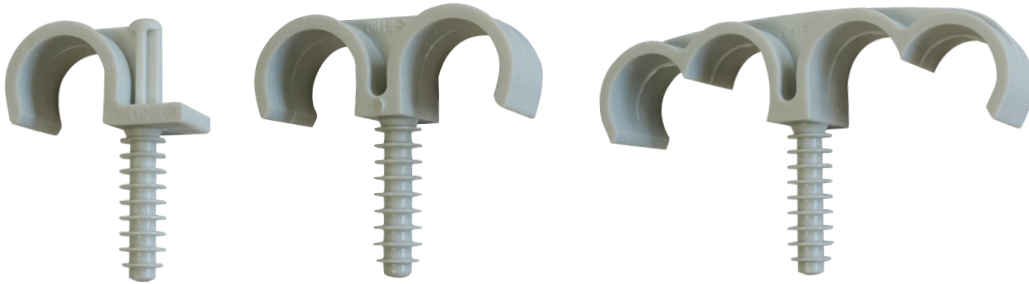
CUSTOM'S CODE : 73181900

ELECTRICITY

FIX-RING® - FASTENING SYSTEM FOR DUCTS AND PIPES



The original since 1997!



Ø 8 mm
Ø 10 mm : FIX-RING® DOUBLE Ø 40 & 45

CHARACTERISTICS :

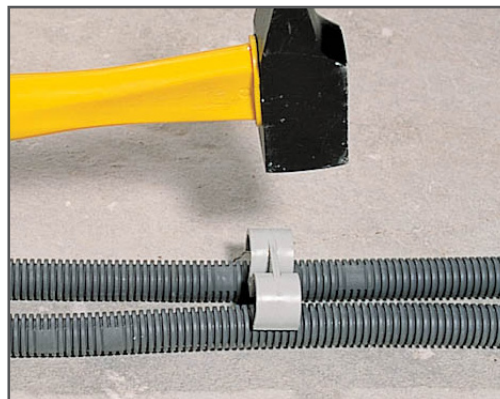
- ▶ Drill, hammer, done !
- ▶ Reinforced strike zone
- ▶ 100 % nylon - Polyamide 6

Registered design



Also available in black or white finish : please contact us

Version	Ø (mm)
Simple	14
	16
	18
	20
	22
	25
	28
Double	32
	16
	18
	20
	22
	25
Quadruple	28
	40
	45
	20 - 22
	25 - 26

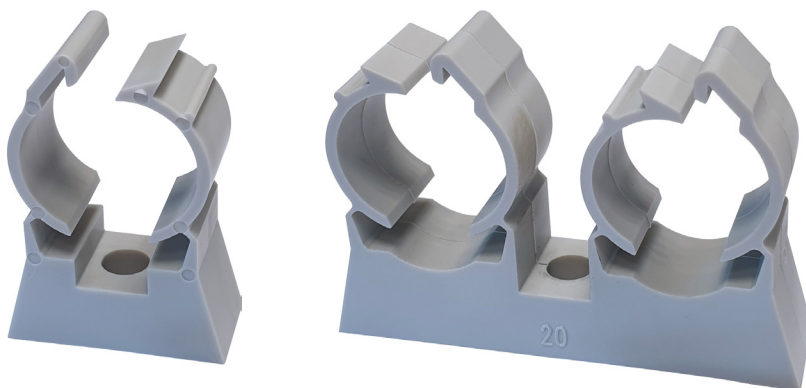


CUSTOM'S CODE : 39269097

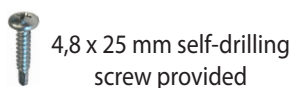
ELECTRICITY

RAPID-TUB - IRO PIPE FIXING ON SHEET METAL AND CLADDING

FOR ADDED SECURITY : PIPE IS MAINTAINED



Version	Ø (mm)
Simple	16
	20
	25
	32
Double	20

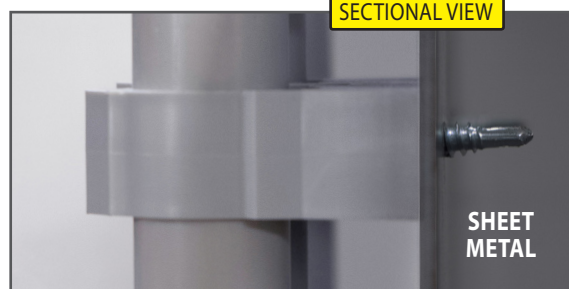


4,8 x 25 mm self-drilling screw provided

CHARACTERISTICS :

- ▶ Screw, click, it's fixed !
- ▶ 100 % nylon - Polyamide 6

SECTIONAL VIEW

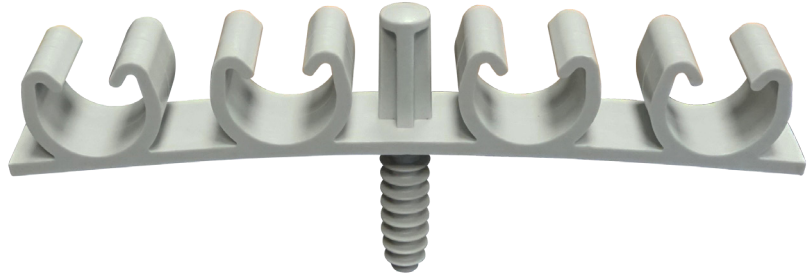
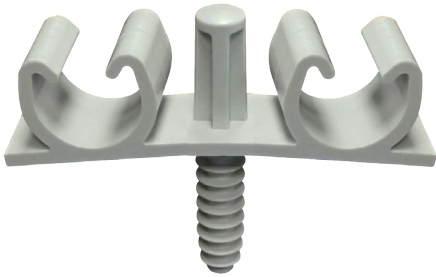
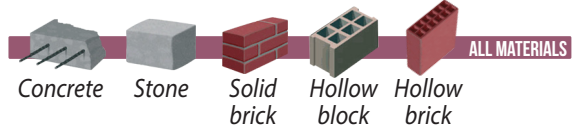


SHEET METAL



CUSTOM'S CODE : 39269097

FIX-RING MULTI[®] - FASTENING SYSTEM FOR DUCTS AND PIPES



CHARACTERISTICS :

- ▶ Drill, tap and hammer the tube with the foot
- ▶ Reinforced strike zone
- ▶ 100 % nylon - Polyamide 6


 ø 8 mm : 16 TO 20
 ø 10 mm : 22 TO 26

Multi-diameter

A single product for different diameters!



Version	Ø (mm)
Double	16 to 20
	22 to 26
Quadruple	16 to 20
	22 to 26



CUSTOM'S CODE : 39269097

FIX-RING STEEL® - INSTALLATION ON WELDED MESH OR THREADED ROD



For **M6** threaded rod and welded mesh **Ø 6** :

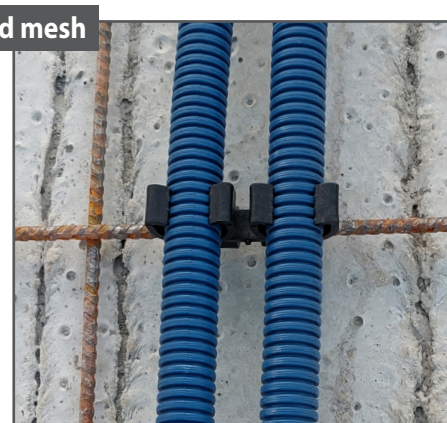
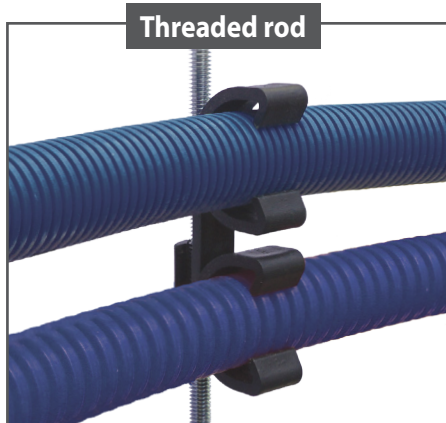
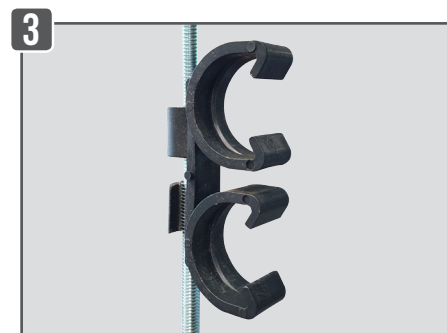
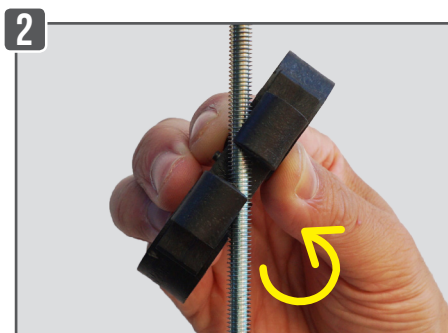
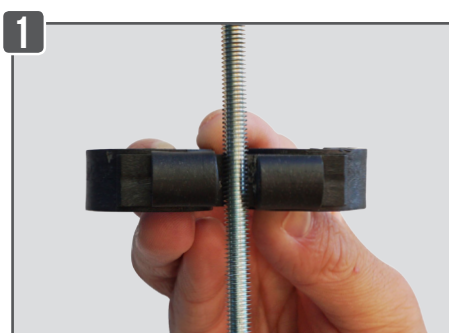
Version	Ø (mm)
Simple	16
	20
	22
Double	20
	22
	25

For **M8** threaded rod and welded mesh **Ø 8** :

Version	Ø (mm)
Double	20
	22
	25

CHARACTERISTICS :

- ▶ Quick and easy installation : clip the fastening on the welded mesh or threaded rod, it is fixed !
- ▶ Installation on the floor or in a false ceiling
- ▶ 2 versions : M6 & M8
- ▶ 100 % nylon - Recycled polypropylene



CUSTOM'S CODE : 39269097

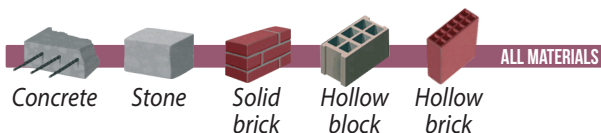
ELECTRICITY

FIX-RING +[®] - ELECTRICAL PIPE FASTENING



CHARACTERISTICS :

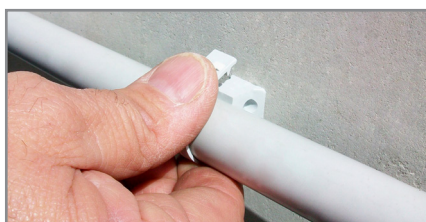
- ▶ 100% nylon polyamide 6
- ▶ UV stabilised
- ▶ Quick and easy installation : drill, hammer, it is fixed !
- ▶ Installation tool provided



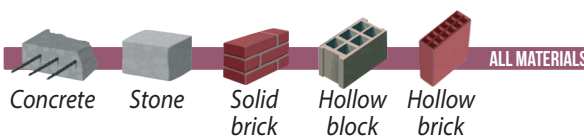
Reliable over time :
will not open !



Ø (mm)
16
20
25



FIX-RING ELEC[®] - ELECTRICAL PIPE FASTENING



CHARACTERISTICS :

- ▶ 100% nylon polyamide 6
- ▶ Quick and easy installation : drill, hammer, it is fixed !
- ▶ Reinforced strike zone



Ø (mm)
16
20



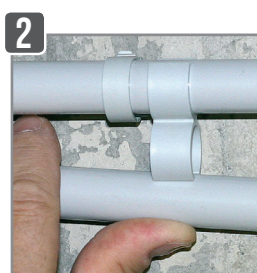
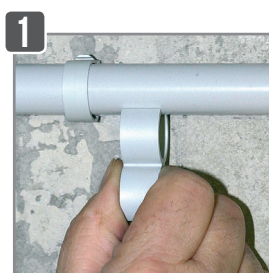
FAST-RING - CLAMP FOR SECURING A TUBE TO AN EXISTING TUBE

CARACTÉRISTIQUES :

- ▶ Quick and easy : simply add the new tube to the existing one without drilling
- ▶ Perfectly straight alignment



Ø (mm)
16 - 16
20 - 20



CUSTOM'S CODE : 39269097

CONNECT-RING® - CONNECTING SLEEVE FOR DUCTS AND PVC PIPES

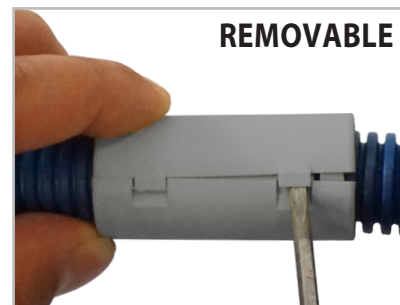
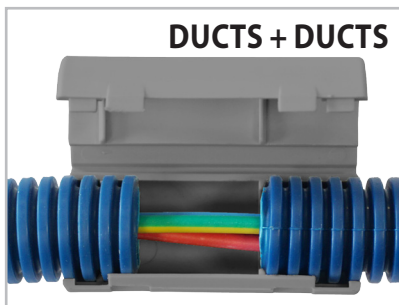
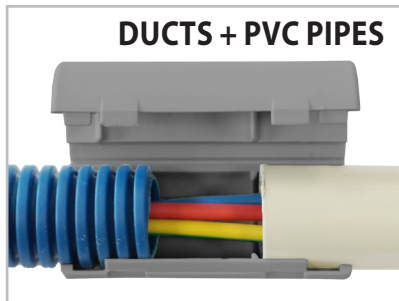


CARACTÉRISTIQUES :

- ▶ characteristics
- ▶ Fire-resistant V2
- ▶ No more washer duct offcuts
- ▶ Can be installed even if the wires are already pulled



Ø (mm)
16
20
25
32

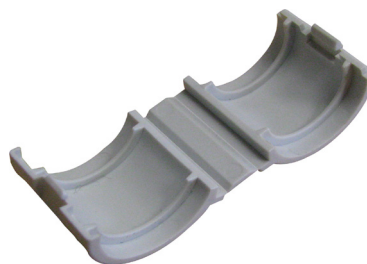


ECO-RING - CONNECTING SLEEVE FOR ELECTRICAL DUCTS

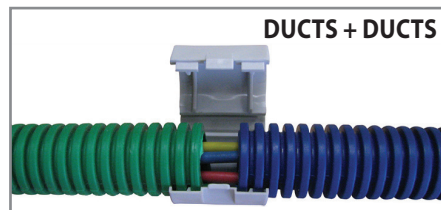


CARACTÉRISTIQUES :

- ▶ 100% nylon polypropylène
- ▶ Fire-resistant V2



Ø (mm)
16
20



CUSTOM'S CODE : 39269097

STOP-RING - CLIP FOR HOLDING DUCTS IN CHASES

CHARACTERISTICS :

- ▶ Stainless steel : rust-proof
- ▶ One product for ducts Ø16, 20 and 25



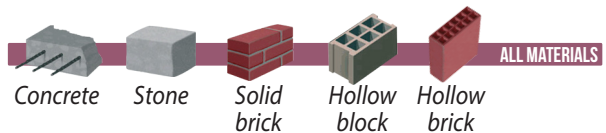
Ø (mm)

16 à 25



CUSTOM'S CODE : 73072100

CLOU-ELEC - ELECTRICAL TRUNKING FASTENING



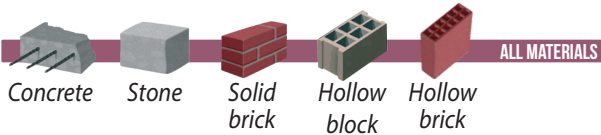
CHARACTERISTICS :

- ▶ 100% nylon poyamide 6
- ▶ Quick and easy : drill, hammer, it is fixed !



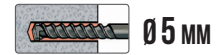
CUSTOM'S CODE : 39269097

FIX-ELEC® - PVC MOULDING FASTENING



CHARACTERISTICS :

- ▶ 100% nylon polyamide 6
- ▶ Quick and easy : drill, hammer, it is fixed !



FIX-TUB ELEC - ELECTRICAL PIPE FASTENING

CHARACTERISTICS :

- ▶ 100 % nylon polyamide 6
- ▶ UV stabilised
- ▶ Easy and quick installation : hand tightening

Ø (mm)

16 à 32

40 à 63



i Adjust the fastening according to the support

CUSTOM'S CODE : 39269097

PRATICO - MAGNET TOOL



CHARACTERISTICS :

- ▶ A new way to pose : easier
- ▶ The clip stands alone : easy to install
- ▶ Multiple applications

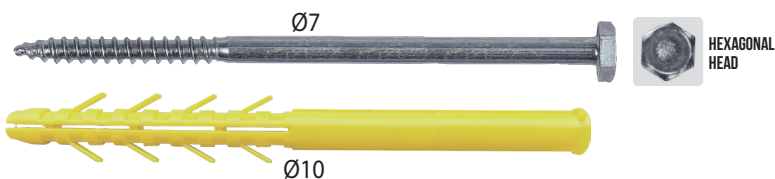
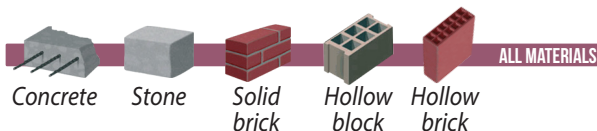


CUSTOM'S CODE : 82055980

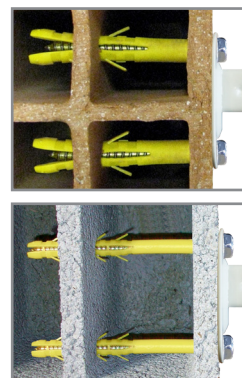
FASTENER

CQLT PLUG Ø10

HEXAGONAL HEAD SCREW



Ø (mm)	Lg. (mm)
10	80
	100
	120
	140
	160
	200
	240
	280

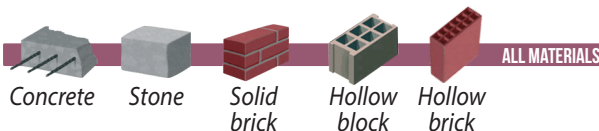


CHARACTERISTICS :

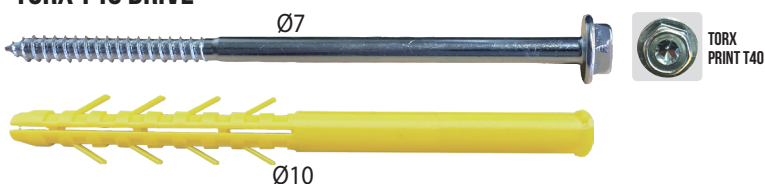
- ▶ Ideal for hollow materials : expansion across multiple cavities of the support
- ▶ Quick and easy : installation through the part to be fixed
- ▶ 100% nylon polyamide 6 plug
- ▶ Anti-rotation fins

CQLT-R PLUG Ø10

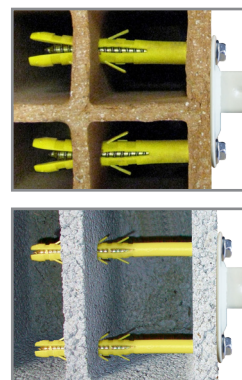
HEXAGONAL HEAD SCREW



TORX T40 DRIVE



Ø (mm)	Lg. (mm)
10	80
	100
	120
	140
	160
	200
	240
	280

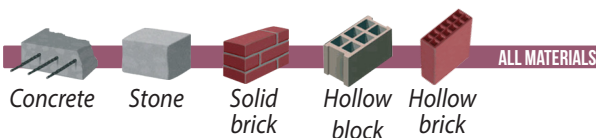


CHARACTERISTICS :

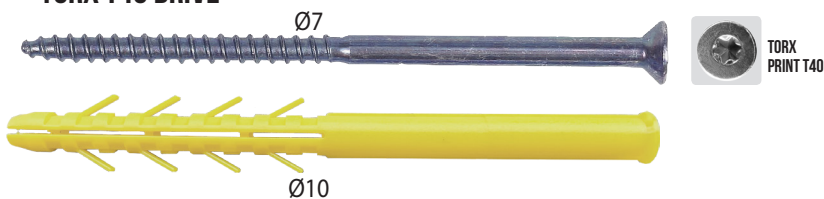
- ▶ Ideal for hollow materials : expansion across multiple cavities of the support
- ▶ Quick and easy : installation through the part to be fixed
- ▶ 100% nylon polyamide 6 plug
- ▶ Anti-rotation fins

CQLV PLUG Ø10

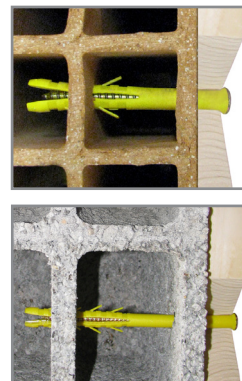
COUNTERSUNK SCREW



TORX T40 DRIVE



Ø (mm)	Lg. (mm)
10	80
	100
	120
	140
	160
	200
	240
	280



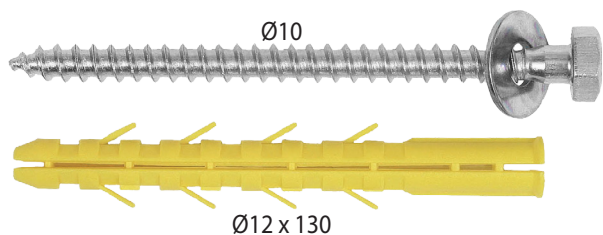
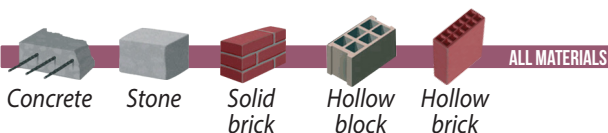
CARACTÉRISTIQUES :

- ▶ Ideal for hollow materials : expansion across multiple cavities of the support
- ▶ Quick and easy : installation through the part to be fixed
- ▶ 100% nylon polyamide 6 plug
- ▶ Anti-rotation fins

CUSTOM'S CODE : 73181100

FASTENER

FRAME FIXING



Ø (mm)	Lg. (mm)
12	130

CHARACTERISTICS :

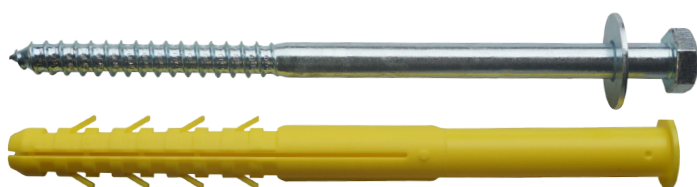
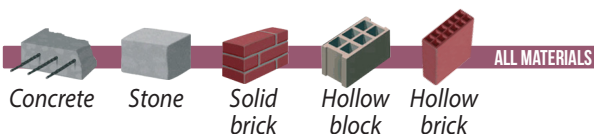
- ▶ Total expansion = plug Ø12 x 130, fully slotted along its entire length & Ø10 x 140 fully threaded screw
- ▶ 100% nylon polyamide 6 plug



CUSTOM'S CODE : 73181100

CARPENTER PLUG

HEXAGONAL HEAD SCREW



Ø (mm)	Lg. (mm)
12 screw spike Ø10	200
	240
16 screw spike Ø12	140
	160
	200
	240
18 screw spike Ø14	300
	160
	200
	240
	300
	350
	400

CHARACTERISTICS :

- ▶ Long plug with hexagonal head screw + washer
- ▶ Ideal for hollow materials
- ▶ 100% nylon polyamide 6 plug
- ▶ **When the washer is in contact with the part to be fixed : STOP ! Do not further**



CUSTOM'S CODE : 73181100

FASTENER

CONCRETE SCREWS CAP

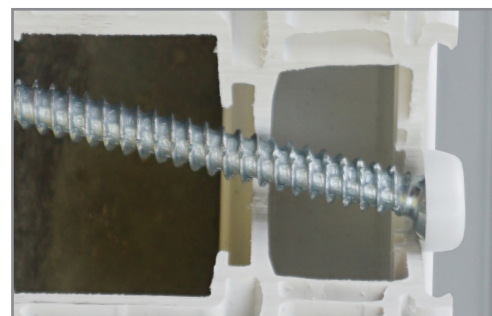


ADJUSTABLE CONCRETE SCREW CAP

CHARACTERISTICS :

- ▶ Guaranteed hold !
- ▶ Aesthetic finish

Adjustable cap :
guaranteed hold even if
when installed at an angle



Black



Light grey



Light brown



Brown



White



Anthracite grey



Beige

CUSTOM'S CODE : 39269097

TOP-ROC CAP



FASTENING FOR WINDOW INSTALLATION

CHARACTERISTICS :

- ▶ Guaranteed hold !
- ▶ Aesthetic finish

Adjustable cap :
guaranteed hold even if
when installed at an angle



Black



Light grey



Light brown



Brown



White



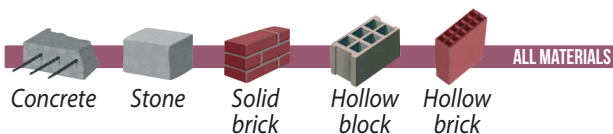
Anthracite grey



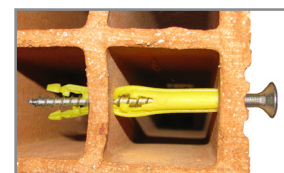
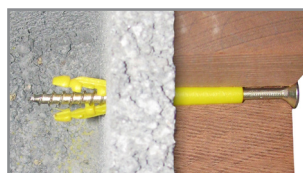
Beige

CUSTOM'S CODE : 39269097

THROUGH PLUG



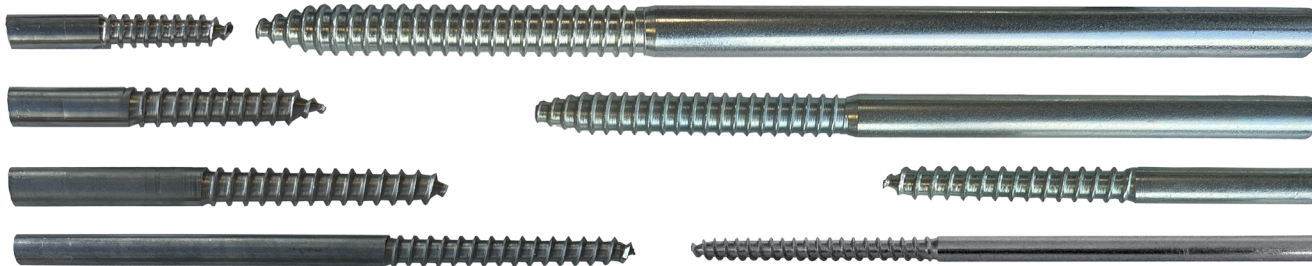
Ø8 x 68 mm



CUSTOM'S CODE : 39269097

FASTENER

HEADLESS SCREW

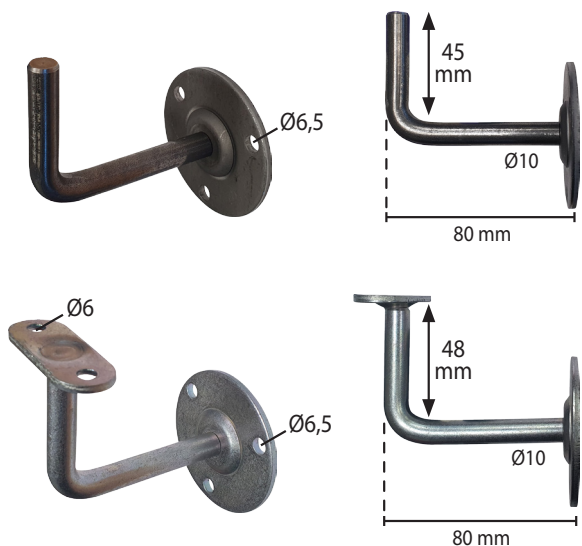


Ø6, Ø7, Ø8, Ø10, Ø12, Ø14 and up to 700 mm in length
 Other sizes available on request - Contact us !



CUSTOM'S CODE : 73181100

HANDRAIL SUPPORT FASTENING



Designation	Finition
Welded	Raw

Designation	Finition
With platinum	Zink
	Raw

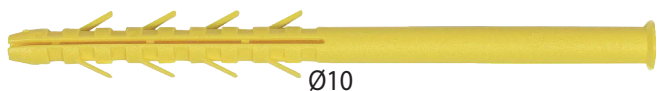
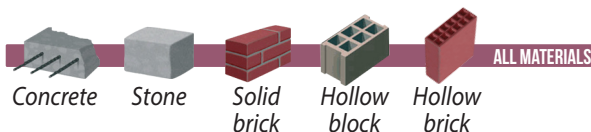


CUSTOM'S CODE : 73181300

FASTENER

EXTERNAL INSULATION

RAINWATER DOWNPIPE FASTENING



To create a locking nut



CHARACTERISTICS :

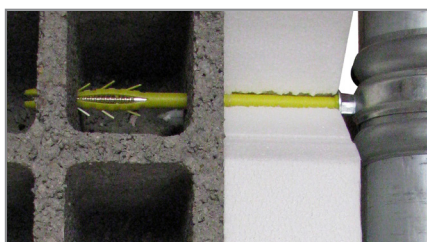
- ▶ For hollow materials, expansion across multiple cavities
- ▶ Easy, fast and clean !
- ▶ No drying time required
- ▶ The clamp is always at the correct distance
- ▶ Direct installation **BEFORE** or **AFTER** insulation

M8

Ø (mm)	Lg. (mm)
10	80
	120
	160
	200
	240
	280
340	

M7

Ø (mm)	Lg. (mm)
10	80
	120
	160
	200
	240
	280
340	



2 ways to screw :

- manually



M7 or M8

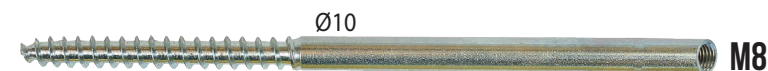
OR

- with a screwdriver



CUSTOM'S CODE : 73181300

REINFORCED RAINWATER DOWNPIPE FASTENING

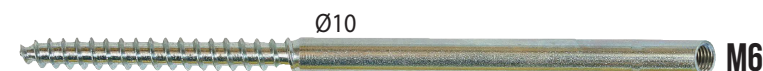


M8

Ø (mm)	Lg. (mm)
12	240
	300



ALUMINUM RAINWATER DOWNPIPE FASTENING



Screwdriving aid

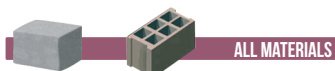
M6

Ø (mm)	Lg. (mm)
12	200
	240



CUSTOM'S CODE : 73181300

FIX-CÂBLE

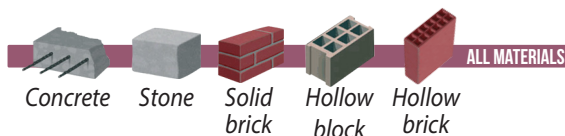


Ø (mm)	Lg. (mm)
16	160
	200
	240
	300

CUSTOM'S CODE : 73181290

FASTENER

EXTERNAL THERMAL INSULATION BLOCK

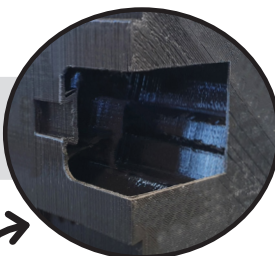


100% RECYCLED PRODUCT

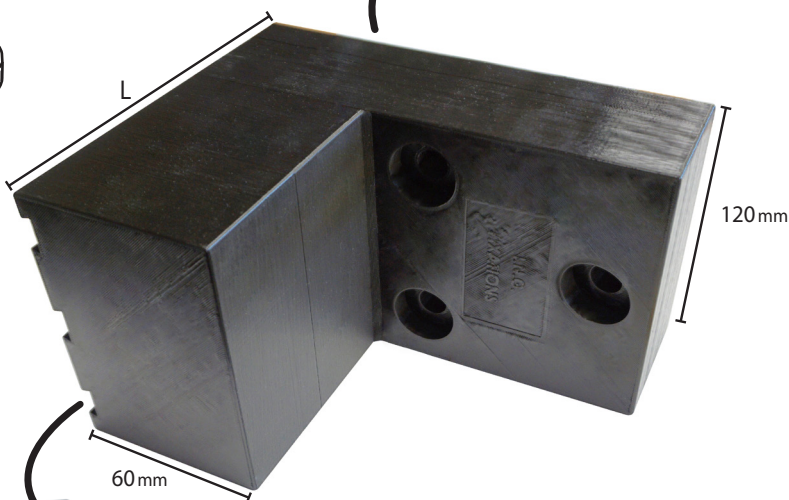
FROM PLASTIC BOTTLE CAPS



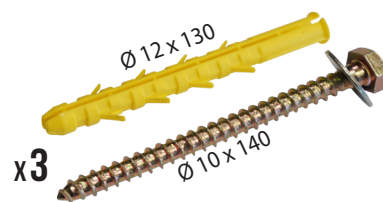
Location for receiving the lower part of the hinge



ADVANTAGE
Cut only the cotter



FASTENINGS INCLUDED



Notches for better adherence of external plaster



CSTB
le futur en construction
Thermal transmission coefficient $\chi = 0,002 \text{ W/K}$
(CSTB test report available upon request) for ETI block with a leng of 140 mm

Ø 12 MM
THROUGH THE BLOCK

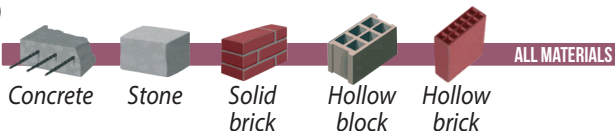
Lg. (mm)
120
140
160
180



CUSTOM'S CODE : 39259010

FASTENER

ISOL-FIX®

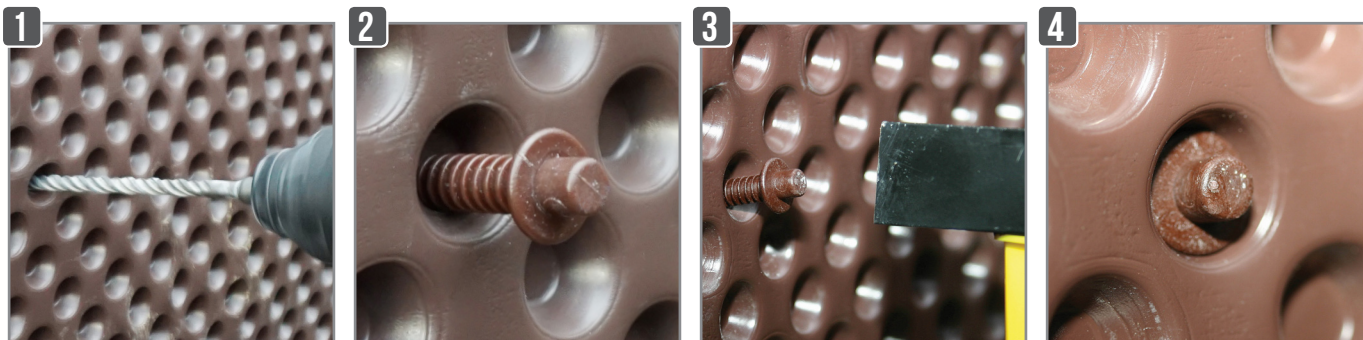


CHARACTERISTICS :

- ▶ 100% nylon - Polyamide 6
- ▶ Better durability over time (no corrosion)
- ▶ Time saving for the installation: drill, hit, it's fixed !
- ▶ Sealing preserved
- ▶ Number of fasteners per m² = 3 or 4 m²



Fixing of sealing elements at the base

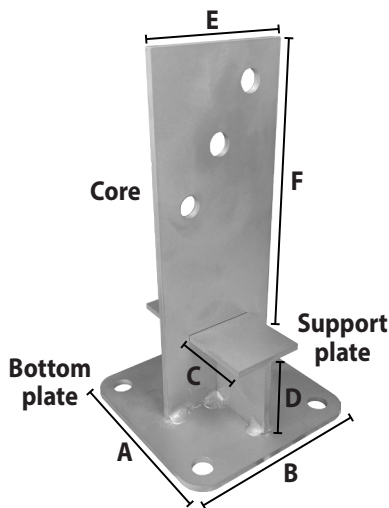


CUSTOM'S CODE : 39269097

COLOMM BASE WITH CORE AND GUSSETS



STAINLESS STEEL A4 OR GALVANIZED



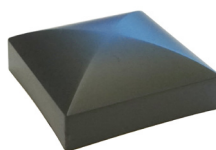
High (mm)	Core					Bottom plate				Support plate		Finition
	E	F	D	Ep.	Drill	A	B	Ep.	Drill	C	Ep.	
168	80	110	50	4,0	Ø13 x 3	120	120	4,0	Ø13 x 4	45	4,0	Stainless steel A2 Galvanized
218	80	160	50	4,0	Ø13 x 3	120	120	4,0	Ø13 x 4	45	4,0	Stainless steel A2 Galvanized
360	100	205	145	4,0	Ø13 x 3	160	160	6,0	Ø13 x 4	45	4,0	Stainless steel A2 Galvanized

CUSTOM'S CODE : 83024190

CAP FOR WOODEN POST

CHARACTERISTICS :

- ▶ Direct screwing through the cap : without drilling
- ▶ 100 % nylon polypropylene
- ▶ Long-lasting Anti-UV



Size
70 x 70 mm
90 x 90 mm

▶ Grey anthracite or black finish



Size
Ø 80 mm
Ø 100 mm
Ø 120 mm

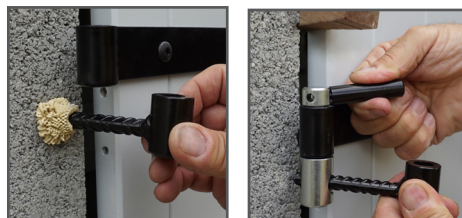
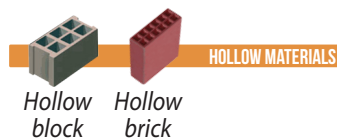
▶ Black finish



CUSTOM'S CODE : 39269097

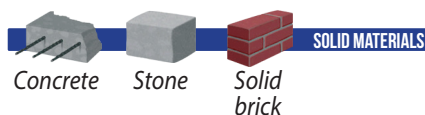
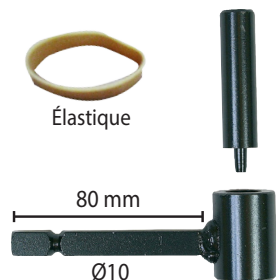
FASTENER

SHUTTER HINGE HOLLOW BLOCK



Ø (mm)	Lg. (mm)
12	80
	130
14	80
	130
16	80
	130

SHUTTER HINGE CONCRETE



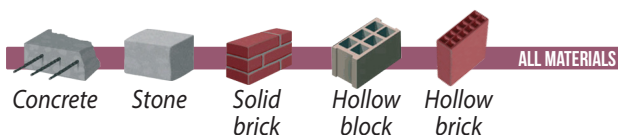
**GAMME RÉSINE
DE SCELLEMENT**
NOUS CONSULTER



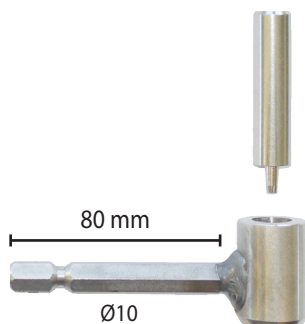
Ø (mm)	Lg. (mm)
12	80
14	80
16	80

SHUTTER HINGE

STAINLESS STEEL A4

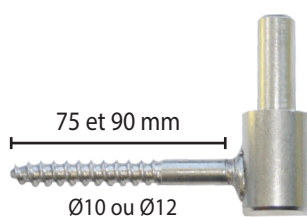


HEXAGONAL HINGE (10 MM HEX TAIL)



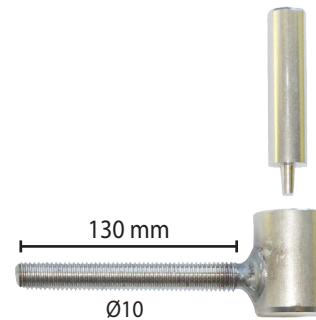
Ø (mm)	Lg. (mm)
14	80
16	80

WOOD HINGE (WOOD THREAD TAIL)



Ø (mm)	Lg. (mm)
14	75
16	90

STANDARD HINGE (TAIL THREADED ROD)



Ø (mm)	Lg. (mm)
14	130
16	130

CUSTOM'S CODE : 73269098

FASTENER

GATE PIVOT WITH RESIN

FOR STEEL GATE WITH CONCRETE THRESHOLD

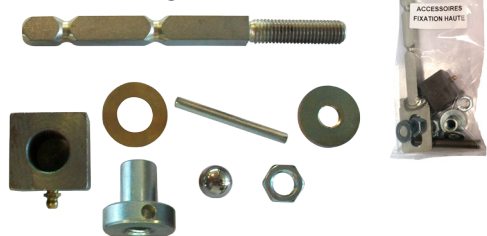
Square section (mm)	Outer dimension of square tubes (mm)
35 x 35	40 mm

KIT CONTENT

Upper fastening



Lower fastening



PATENTED

Upper and lower fasteners packed separately

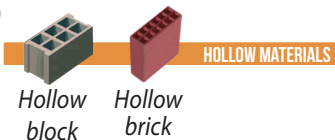
AESTHETIC



CUSTOM'S CODE : 73269098

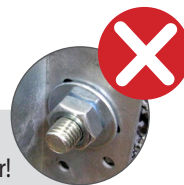
CLOU RÉSINE®

FIXING WITH RESIN

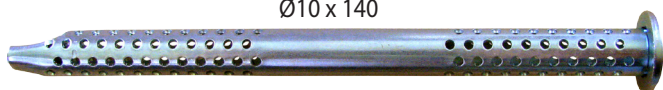


PATENTED

4 products in 1:
Replaces threaded rod, nut, washer and filter!



Ø10 x 140

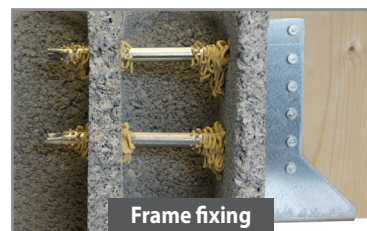


CHARACTERISTICS :

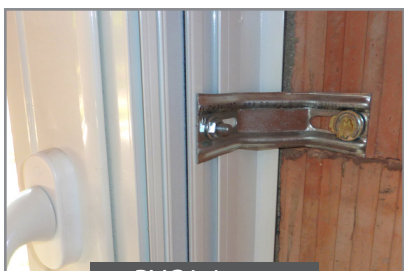
- ▶ Very strong holding
- ▶ Maximum thickness of the part to be fixed : 2 mm



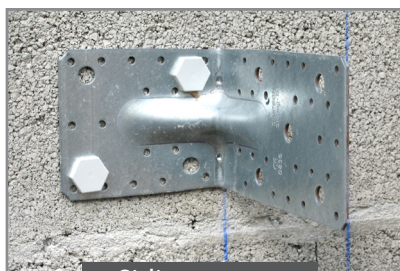
Frame fixing
in hollow brick



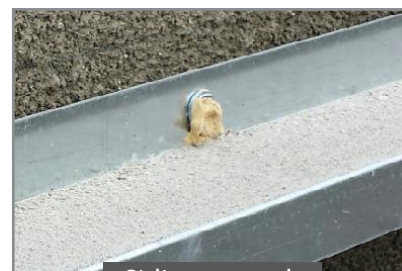
Frame fixing
in hollow block



PVC joinery



Siding square

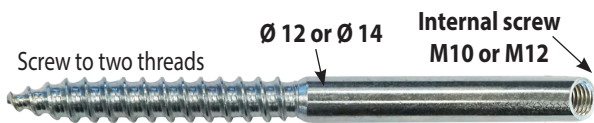
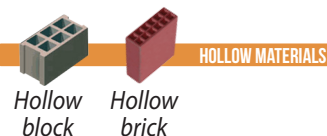


Siding smooth

CUSTOM'S CODE : 7318240090

FASTENER

FIX-STORE® - AWNING FASTENING WITH RESIN



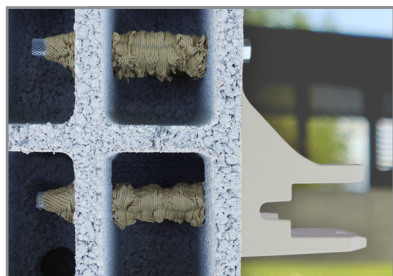
Metal filter Ø 15 x 140 ou 17 x 130



Filter installation tool



Internal screw	Ø x L (mm) Screw 2 threads	Finition
M10	12 x 140	Steel
	12 x 140	stainless steel A2
	14 x 130	Acier
M12	14 x 130	Steel
		stainless steel A2



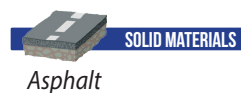
FIX-STORE ISO FOR EXTERNAL INSULATION ALSO AVAILABLE



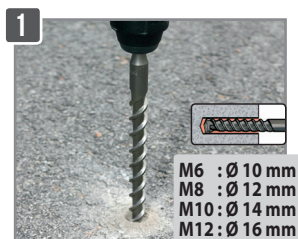
CSTB
le futur est construction
Coefficient of thermal transmission
FIXATION STORE ISO
 $\chi = 0.018$ W/K (PV CSTB on request)

CUSTOM'S CODE : 73181290

FIX-ASPHALTE® - ASPHALT FASTENING USING RESIN



Internal screw	Ø x L (mm)	Finition
M6	8 x 70	Acier
M8	10 x 70	Acier
M10	12 x 70	Acier
	12 x 100	Acier
		Inox A2
M12	14 x 100	Acier
	14 x 70	Acier
	14 x 100	Acier

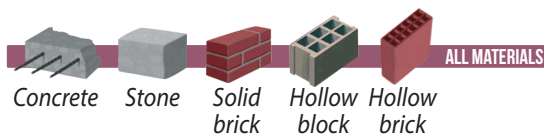


CUSTOM'S CODE : 7318190090

FASTENER

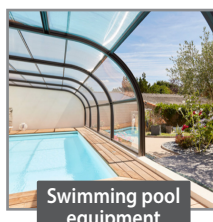
A4 STAINLESS STEEL DOUBLE-THREADED

FIXING WITH RESIN



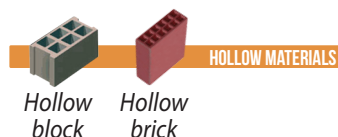
M8 : Ø 12 MM
M10 : Ø 14 MM

Taraudage	Ø x L (mm)
M8	10 x 70
M10	12 x 100



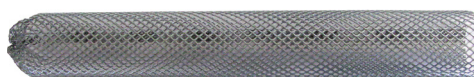
CUSTOM'S CODE : 73181210

METAL SLEEVE



CHARACTERISTICS :

- Fully perforated sleeve = sealing + high performance !
- Resin along the entire length of the sleeve : better hold

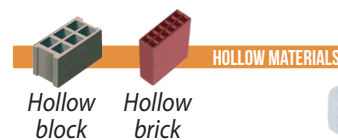


Ø (mm)	Lg. (mm)
15	85
	130
	140
17	130

Ø (mm)	Lg. (mm)
20	150
	200
22	150
	200
	250

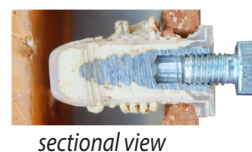
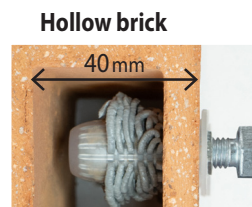
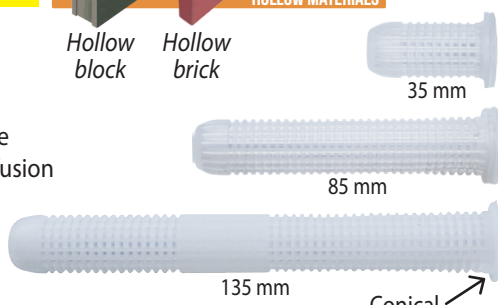
CUSTOM'S CODE : 73145000

NYLON SLEEVE



CHARACTERISTICS :

- Fully perforated under the sleeve head : better resin diffusion
- Conical shape under the head : better anchoring in hollow materials

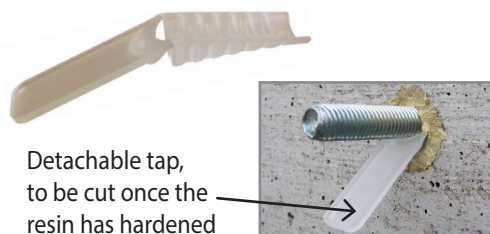


Ø (mm)	Lg. (mm)
16	35
	85
	135

CUSTOM'S CODE : 39269097

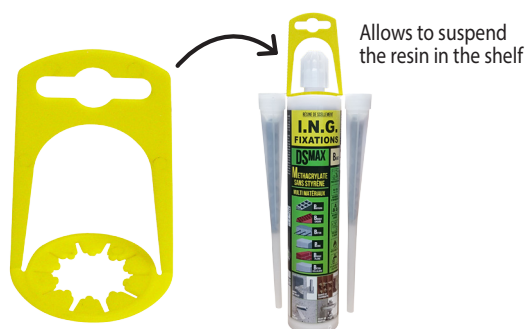
CENTRALISER

i Allows to center the part to be fixed in the hole during sealing



CUSTOM'S CODE : 39259080

RESIN CLIP



CUSTOM'S CODE : 39269097

FASTENER

FEMALE RENOVATION SCREW ANCHOR - DIRECT TO WOOD



CHARACTERISTICS :

- ▶ Direct screwing into the wood
- ▶ No plug : quick and economical installation
- ▶ Weighted load with safety coefficient of 3 : **100 kg**

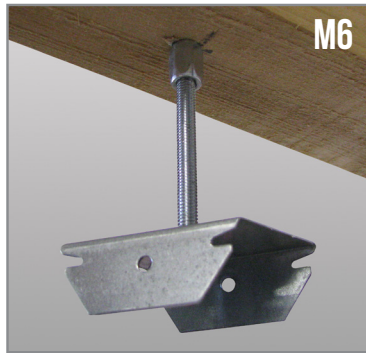


M6
M7
M8



M10

Version
M6
M7
M8
M10



M6

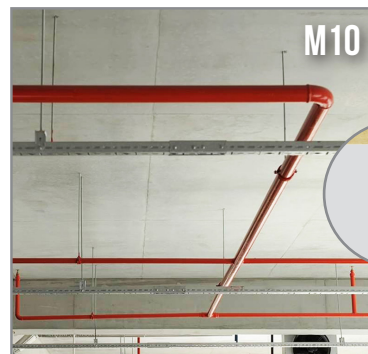


M8



M10

Air conditioning



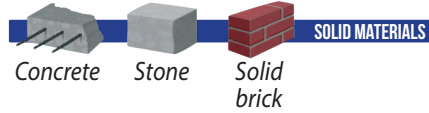
M10

Pear-shaped : for the installation of automatic fire suppression system, such as «sprinkler»

CUSTOM'S CODE : 7318130090

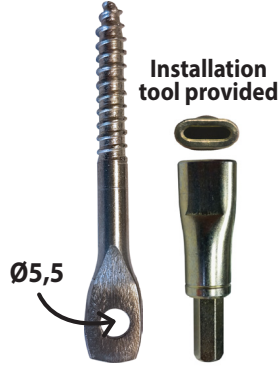
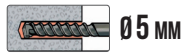
FASTENER

SPEEDY-FIX® - DIRECT CONCRETE



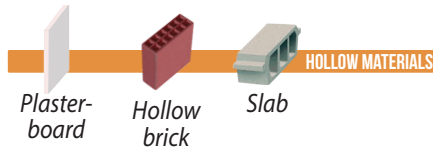
CHARACTERISTICS :

- ▶ No need plug : direct screwing into concrete
- ▶ Hammer not allowed : use a normal screwdriver
- ▶ Weighted load with safety coefficient of 3 : **100 kg**



CUSTOM'S CODE : 73181300

RAPID WASHER + TOGGLE M6

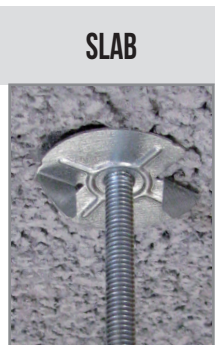
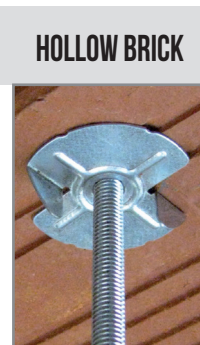


Effectively replaces the washer + nut :
no need for wrench anymore!



CHARACTERISTICS :

- ▶ For the installation of M6 threaded rods in hollow materials (slab, hollow brick, plasterboard)
- ▶ The toggle automatically locks into the hollow body by positioning the long part of the toggle upwards
- ▶ Hand screwing and tightening
- ▶ Quick and easy

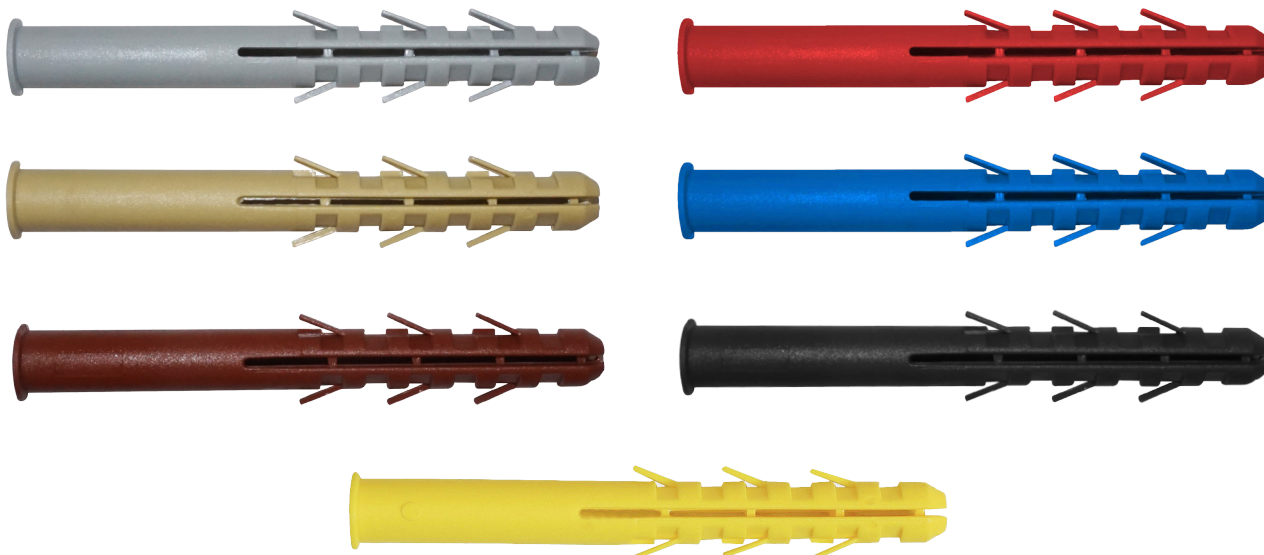


CUSTOM'S CODE : 73261910

FASTENER

THE CUSTOMIZATION OF THE COLOR

Choose the color of your plug : grey, beige, brown, black, blue, red...



OUR PACKAGING

A wide variety of packaging to meet all your needs : boxes, bags, buckets, plastic blisters ...



Neutral boxes with personalized labels!



HEAD OFFICE & PRODUCTION SITE

I.N.G. FIXATIONS
ZI de Chassende
43000 Le Puy-en-Velay
France

EMAIL
ing@ingfixations.fr

Téléphone
+33 (0)4 71 05 59 03

WEBSITE

www.ingfixations.fr



@INGFixations



ING Fixations

