

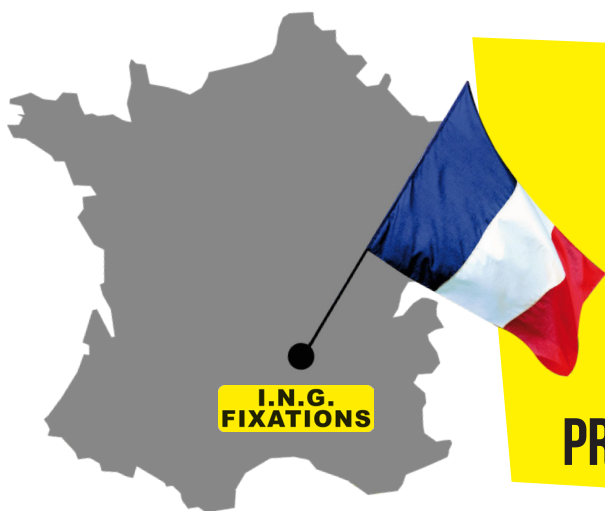
I.N.G. FIXATIONS

FRENCH INVENTOR AND MANUFACTURER *since 1985 !*





THE COMPANY
↑



36 YEARS OF EXPERIENCE
12 000 M² OF FLOOR SPACE
2 PRODUCTION SITES
20 PATENTS FILED

PRODUCTS EXPORTED TO 35 COUNTRIES

A French know-how !

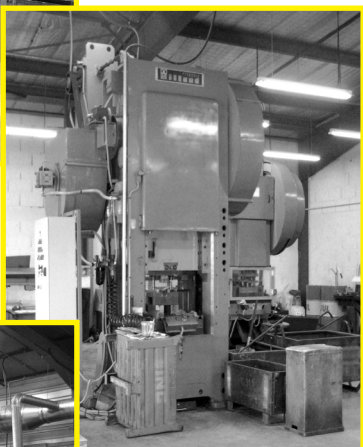
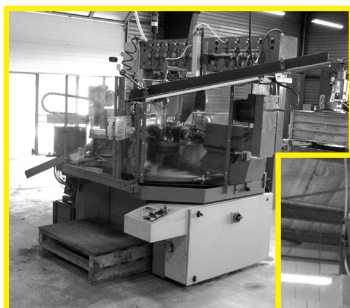
Since

1985

I.N.G. FIXATIONS was founded in 1985 by Mr François INGLESE, with the invention of the I.N.G. process (new hinge installation). This process enables the fitting of resin to hinges.

Since then I.N.G. FIXATIONS has become a manufacturer in its own right (with many patents filed).

Located in France in the heart of Auvergne (43, Haute-Loire), we sell standard and special fixing systems suited to different trades.



WE ARE EXHIBITORS FROM :



MEMBER OF :



WEBSITE
www.ingfixations.fr

Scan me !



YOUTUBE



ENGLISH
VERSION



DISCOVER OUR :

PRODUCTS
TECHNICAL DOCUMENTS
CATALOGS / BROCHURES
NEWS
OUR HISTORY





SUMMARY



ELECTRICIAN

FIX-RING® Page 4	FIX-RING MULTI® Page 5	FIX-RING ELEC® Page 6	FIX-RING +® Page 7	RAPID-TUB Page 8	FAST-RING Page 9
CONNECT-RING® Page 10	ECO-RING Page 11	PASS-RING Page 12	STOP-RING Page 13	FIX-ELEC® Page 14	CLOU-ELEC Page 15



PLUMBER

FIX-RING® Page 16	FIX-RING MULTI® Page 17	TUB-RING® Page 18	FIX-RING CLIM® Page 19	FIXING KIT Page 20	WALL PLUG FOR TAP Page 21
WALL PLUG FOR WATER HEATING SYSTEM Page 22	M6 AND M8 UNIVERSAL FIXING Page 23	WALL PLATE FOR SANITARY FITTINGS Page 24	ADJUSTABLE SINK BRACKETS FOR COLLECTIVE WASH BASIN Page 25	IZY 7-8-10® Page 26	M7 AND M8 ELBOW Page 27
PIPE NIPPLE FITTING Page 28	M6 QUICK-FIX WASHER + TOGGLE BOLT Page 29				



FASTENERS

COLT AND COLT-R Page 30	CLOU RÉSINE® Page 31	CEILING HANGER BOLT Page 32	RAPIDO® Page 33	SPEEDY-FIX® Page 34	M6 QUICK-FIX WASHER + TOGGLE BOLT Page 35
FIX-RAIL Page 36	FIX-ASPHALT® Page 37	FIX-STORE® Page 38	ACCESSORIES FOR RESIN ANCHOR Page 39	ISOL-FIX® Page 40	FIX GABION Page 41
PRATICO® Page 42	CAP FOR WOODEN POSTS Page 43	SWIVEL CAP FOR CONCRETE SCREW Page 44	SWIVEL CAP FOR TOP-ROC SCREWS Page 45	WALL PLUG Page 46	PIVOT HINGE FOR STEEL GATE WITH STEP Pages 47-48
GUTTER FIXINGS Page 49	HINGE FOR WOOD Page 50	SHUTTER STOP Page 51	UNIVERSAL STOP BLOCK Page 52	HEADLESS LAG SCREW ROUGH Page 53	NYLON PLUG Page 53

FIX-RING[®] - THE ORIGINAL

FIXING FOR FLEXIBLE PIPE AND TUBE



SIMPLE

Ø 14 - 16 - 18 - 20 mm
22 - 25 - 28 - 32 mm



DOUBLE

Ø 16 - 18 - 20 mm
Ø 22 - 25 - 28 mm
NEW Ø 40 - 45 mm



QUADRUPLE

Ø 20 - 22 mm
Ø 25 - 26 mm



Ø 8 mm



- ▶ Quick and easy : Drill, hammer, done !
- ▶ Colour : grey
- ▶ Drill hole Ø 8 mm
- ▶ 100 % Nylon - Polyamide 6

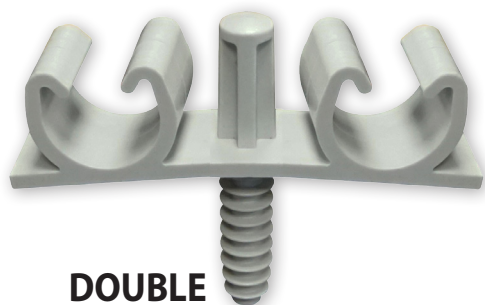
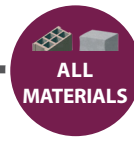


**AVAILABLE
IN BLACK**

CUSTOM'S CODE : 39269097

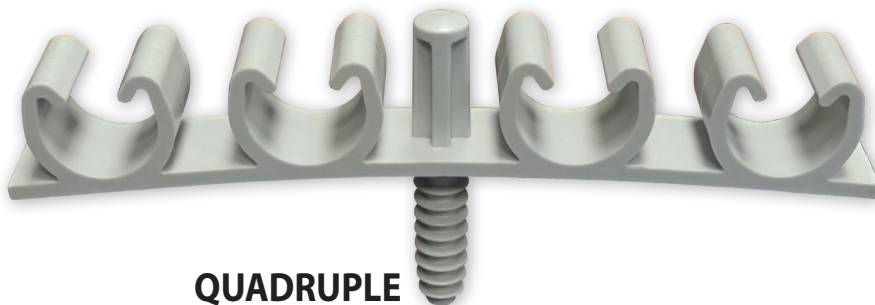
FIX-RING MULTI®

FIXING FOR FLEXIBLE PIPE AND TUBE



DOUBLE

Ø 16 - 20 mm
Ø 22 - 26 mm

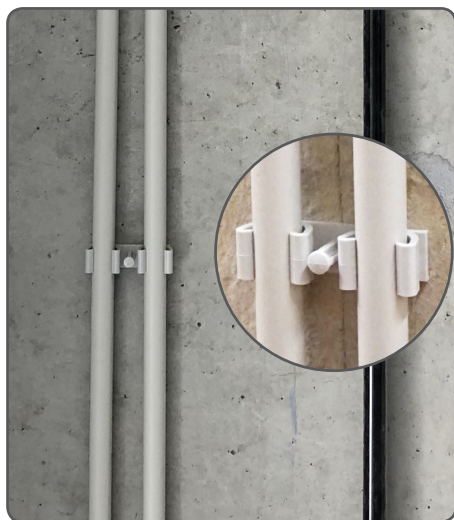


QUADRUPLE

Ø 16 - 20 mm
Ø 22 - 26 mm



Ø 16 to 20 : Ø 8 mm
Ø 22 to 26 : Ø 10 mm



- ▶ Quick and easy : Drill, hammer and then clip pipe or duct into place with your hand
- ▶ Multi-diameter : one product for different diameters
- ▶ Safer work : fewer falls
- ▶ Reinforced strike zone
- ▶ Colour : grey
- ▶ 100% nylon - Polyamide 6

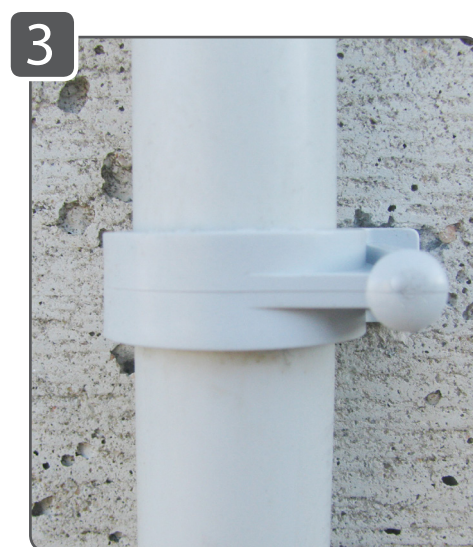
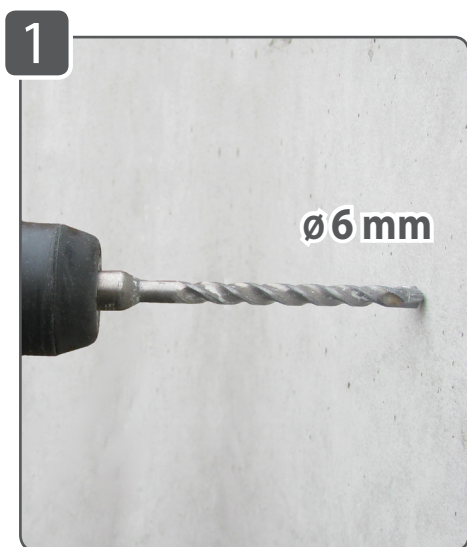
CUSTOM'S CODE : 39269097

FIX-RING ELEC[®]

FIXING FOR FLEXIBLE PIPE AND TUBE



Ø 6 mm



- ▶ Quick and easy : Drill, hammer, done !
- ▶ Colour : grey
- ▶ Drill hole Ø 6 mm
- ▶ 100 % Nylon - Polyamide 6

CUSTOM'S CODE : 39269097



FIX-RING +[®]

REMOVABLE FIXING FOR ELECTRICAL TUBE



Ø 8 mm



- ▶ Quick and easy : Drill, hammer, done !
- ▶ Secure : conduit firmly locked in place and not just clipped in
- ▶ Can be removed with a setting tool or screwdriver
- ▶ UV-stabilised
- ▶ Fire-retardant in accordance with V0 Classification
- ▶ Colour : grey
- ▶ Drill hole Ø 8 mm
- ▶ 100 % Nylon - Polyamide 6

CUSTOM'S CODE : 39269097

RAPID-TUB



FIXING FOR TUBES ON SHEET METAL AND CLADDING



SIMPLE
Ø 20 mm



DOUBLE
Ø 20 mm

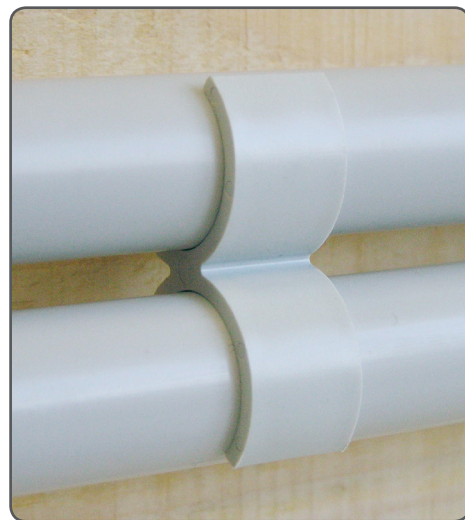


- ▶ Quick and easy : Screw, click and done!
- ▶ Manually click into place
- ▶ Durable and secure : does not open
- ▶ Can be opened using a screwdriver
- ▶ Colour : grey
- ▶ Self-tapping screw **4.8 x 25 mm** supplied
- ▶ 100 % Nylon - Polyamide 6

CUSTOM'S CODE : 39269097

FAST-RING

CONNECTING A TUBE TO AN EXISTING TUBE

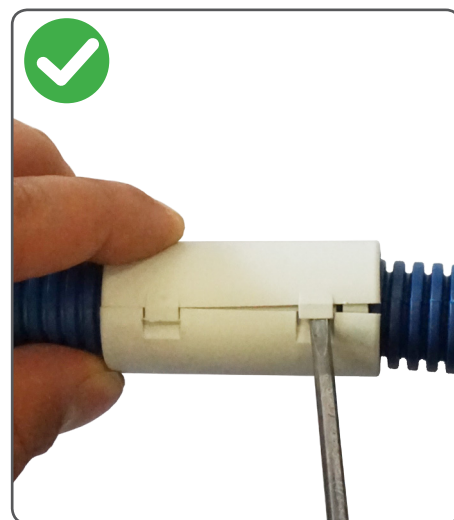
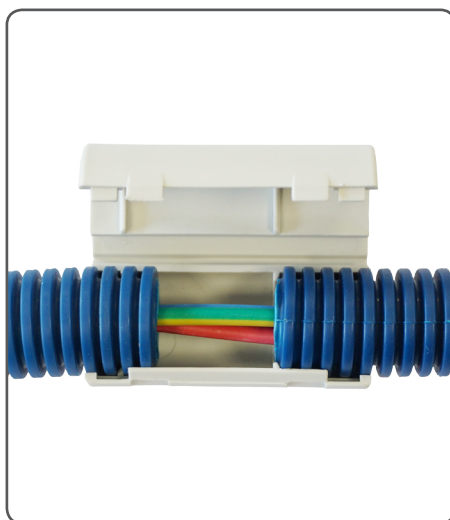
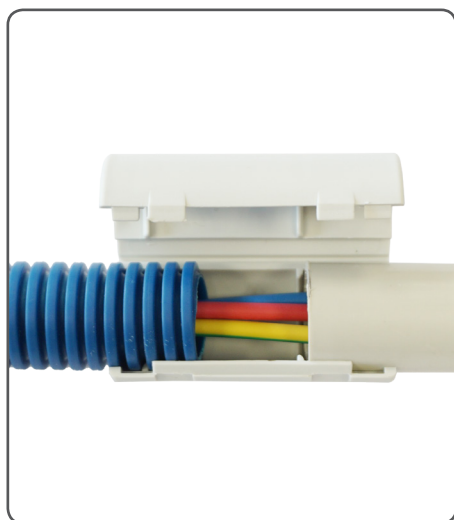


- ▶ Quick and easy : connect a new tube directly to the existing tube without having to drill any holes
- ▶ Perfectly straight
- ▶ Colour : grey
- ▶ 100 % Nylon - Polyamide 6

CUSTOM'S CODE : 39269097

CONNECT-RING®

CONNECTING SLEEVE FOR FLEXIBLE PIPE AND TUBE



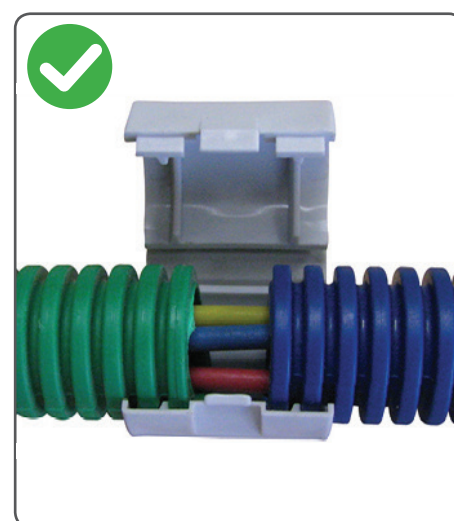
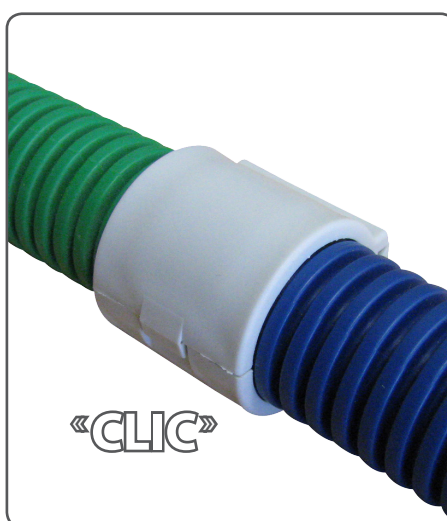
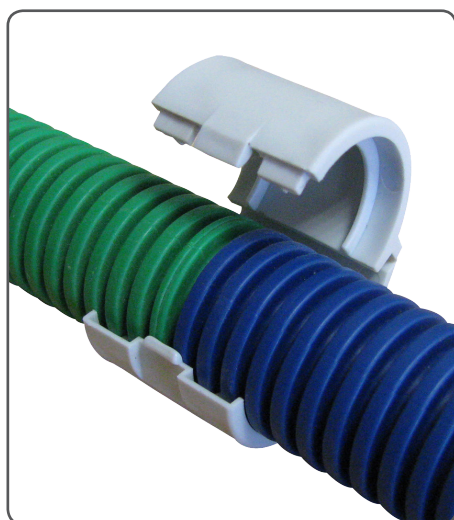
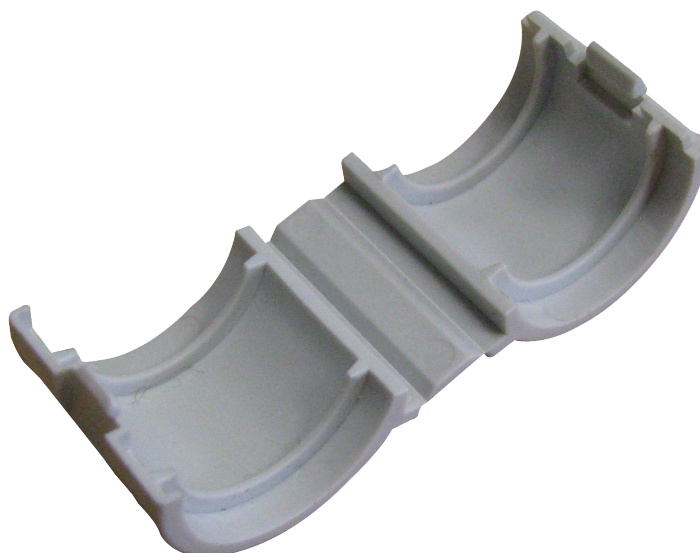
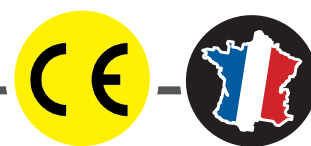
- ▶ No more unusable ducts
- ▶ Quick and easy !
- ▶ Removable
- ▶ Can be used even if wires are exposed
- ▶ Fire-retardant in accordance with V2 Classification
- ▶ Colour : grey
- ▶ Length : **50 mm**
- ▶ 100 % Nylon - Polypropylene



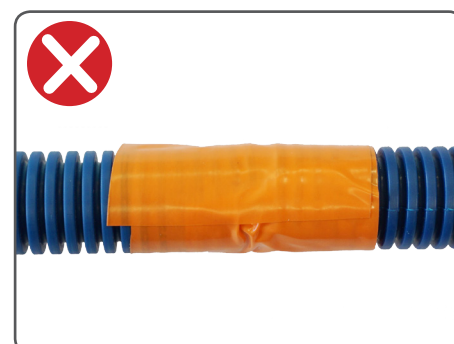
CUSTOM'S CODE : 39269097

ECO-RING

CONNECTING SLEEVE FOR FLEXIBLE PIPE



- ▶ No more unusable ducts
- ▶ Quick and easy !
- ▶ Removable
- ▶ Can be used even if wires are exposed
- ▶ Fire-retardant in accordance with V2 Classification
- ▶ Colour : grey
- ▶ Length : **22 mm**
- ▶ 100 % Nylon - Polypropylene



CUSTOM'S CODE : 39269097

PASS-RING



ENABLES FLEXIBLE PIPES TO PASS THROUGH RAILS

Ø16 TO Ø20



- Quick, easy and practical !
- Time savings : electrical conduits pass through quickly and without having to be forced into the holes of partition rails in plasterboard
- Multi-diameter : for Ø16 and Ø20 flexible pipes

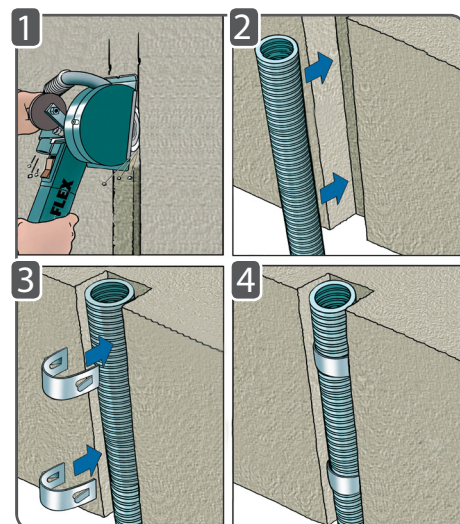
CUSTOM'S CODE : 39269097

STOP-RING

FASTENER FOR SUPPORTING PIPES IN CHANNELS



STAINLESS STEEL

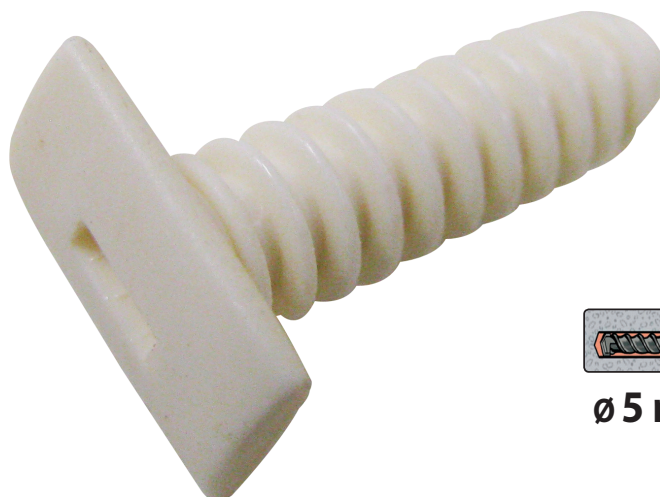
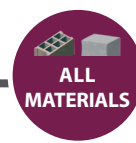


- Quick, easy and practical !
- Material : stainless steel
- Does not rust : stainless-steel fastener
- Multi-diameter : for Ø 16, Ø 20 and Ø 25 pipes

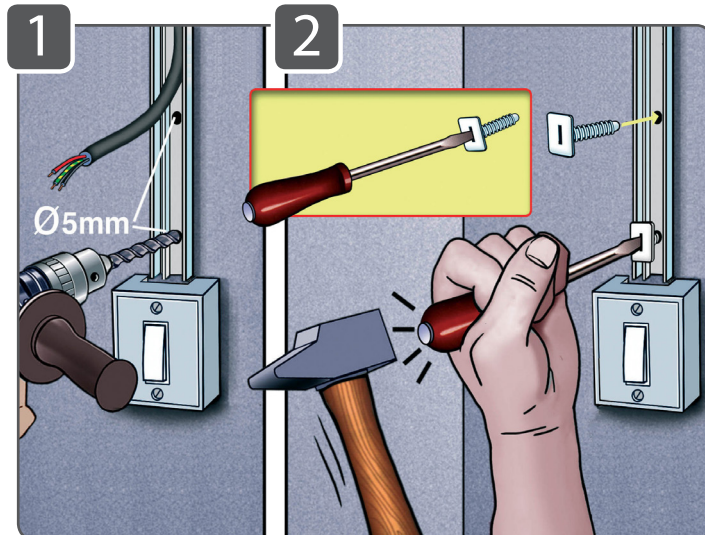
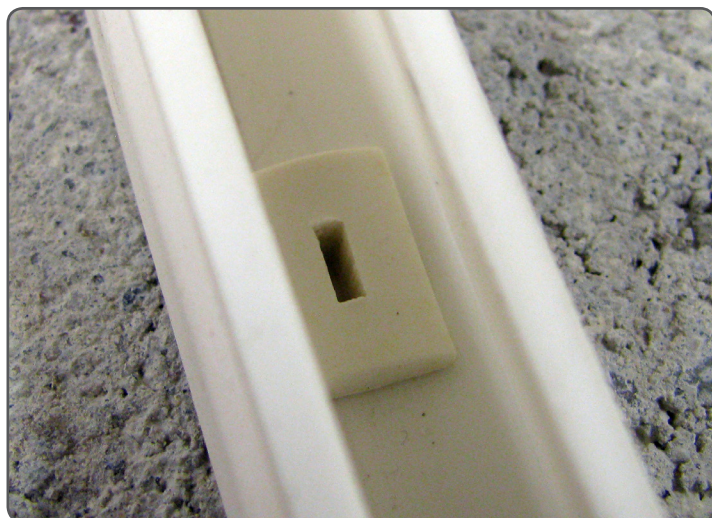
CUSTOM'S CODE : 73072100

FIX-ELEC®

FIXING FOR PVC MOULDINGS



Ø 5 mm

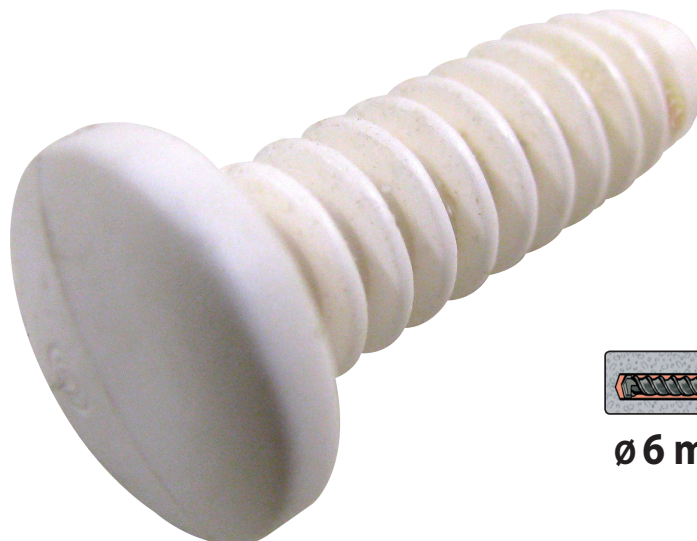
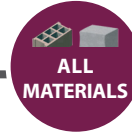


- ▶ Quick and easy : Drill, hammer, done !
- ▶ Registered trademark
- ▶ 100% nylon - Polyamide 6
- ▶ Colour : white
- ▶ Drill hole Ø 5 mm
- ▶ Use with flat-head screwdriver n° 0,8 x 4

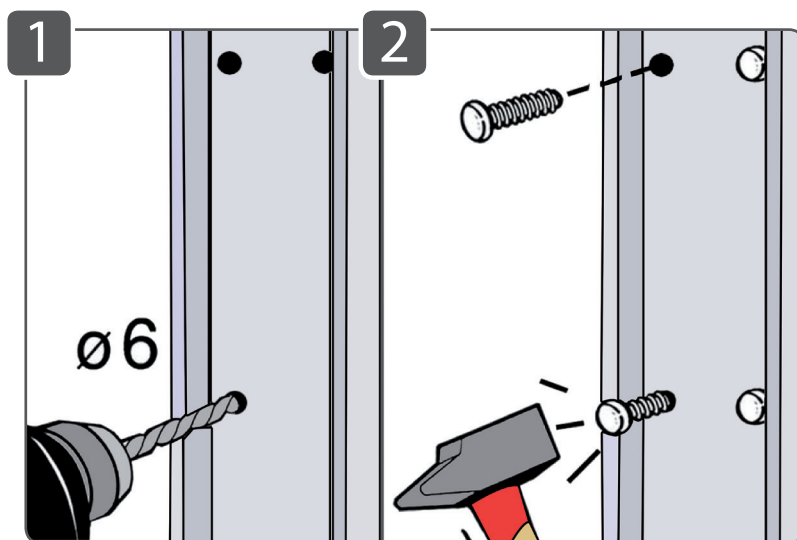
CUSTOM'S CODE : 39269097

CLOU-ELEC

FIXING FOR PVC CABLE TRAY



Ø 6 mm



- ▶ Quick and easy : Drill, hammer, done !
- ▶ 100% nylon - Polyamide 6
- ▶ Colour : white
- ▶ Drill hole Ø 6 mm

CUSTOM'S CODE : 39269097

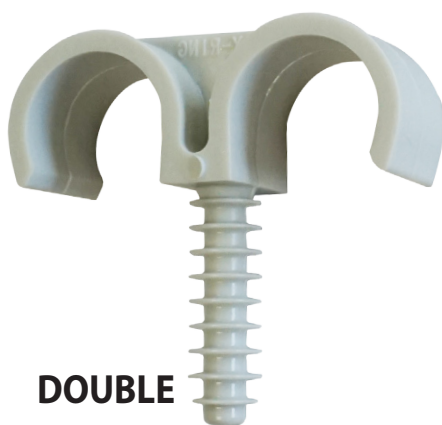
FIX-RING® - THE ORIGINAL

FIXING FOR FLEXIBLE PIPE AND TUBE



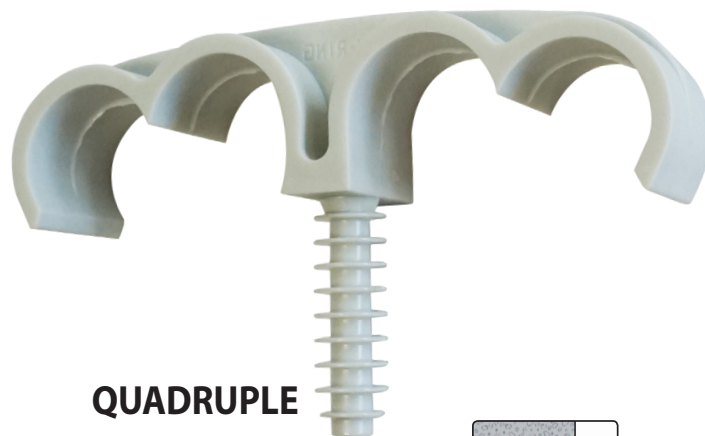
SIMPLE

Ø 14 - 16 - 18 - 20 mm
22 - 25 - 28 - 32 mm



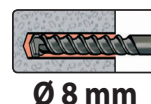
DOUBLE

Ø 16 - 18 - 20 - 22 mm
25 - 28 - 40 - 45 mm

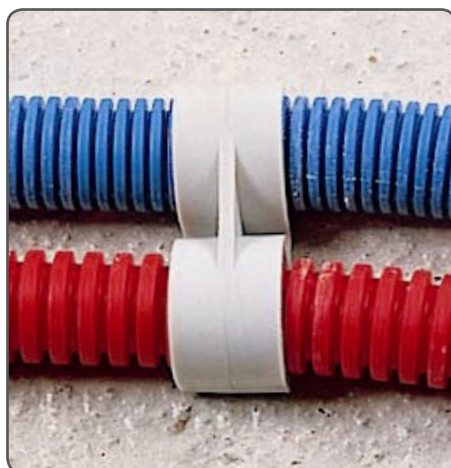


QUADRUPLE

Ø 20 - 22 mm
Ø 25 - 26 mm



NEW



NEW
Ø 40 & 45



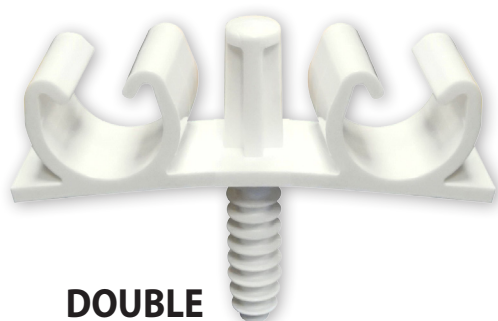
- Quick and easy : Drill, hammer and clip tubing into place with your foot !
- Multi-diameter : one product for different diameters
- Safer work : fewer falls
- Reinforced strike zone
- Colour : white
- 100% nylon - Polyamide 6



CUSTOM'S CODE : 39269097

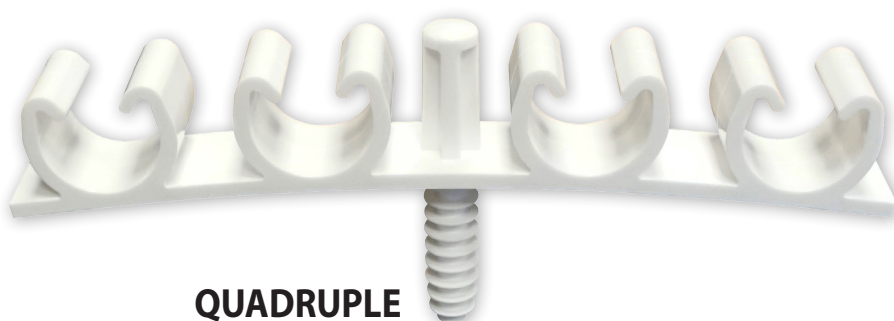
FIX-RING MULTI®

FOR FIXING MULTILAYER, PEX AND COPPER PIPES



DOUBLE

Ø 16 - 20 mm
Ø 22 - 26 mm



QUADRUPLE

Ø 16 - 20 mm
Ø 22 - 26 mm



Ø 16 to 20 : Ø 8 mm
Ø 22 to 26 : Ø 10 mm



- ▶ Quick and easy : Drill, hammer and clip tubing into place with your foot !
- ▶ Multi-diameter : one product for different diameters
- ▶ Safer work : fewer falls
- ▶ Reinforced strike zone
- ▶ Colour : white
- ▶ 100% nylon - Polyamide 6

CUSTOM'S CODE : 39269097

TUB-RING® - THE ORIGINAL

FIXING FOR MULTI TUBES LAYOR



SIMPLE

Ø 15 - 16 MM
Ø 20 MM
Ø 25 - 26 MM
Ø 32 MM

NEW



DOUBLE

Ø 15 - 16 MM
Ø 20 MM
Ø 25 - 26 MM



- ▶ Quick and easy : Screw, click and done !
- ▶ Manually click into place
- ▶ Durable and secure : does not open
- ▶ Can be opened using a screwdriver
- ▶ Good distance from the wall : crimping pliers can be used and insulation can be mounted without having to remove the tubing
- ▶ Colour : white
- ▶ 100% nylon - Polyamide 6

**AVAILABLE
IN-BLACK**



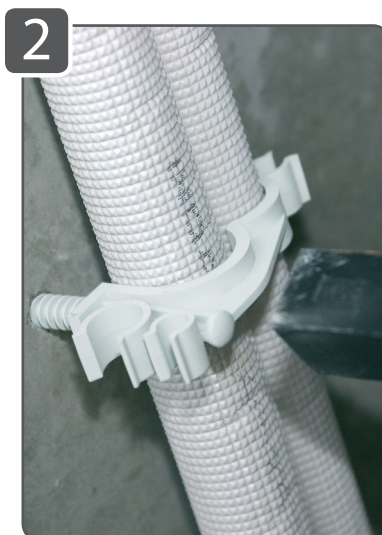
CUSTOM'S CODE : 39269097

FIX-RING CLIM[®]

FIXING FOR AIR-CONDITIONING UNITS



Ø 8 mm

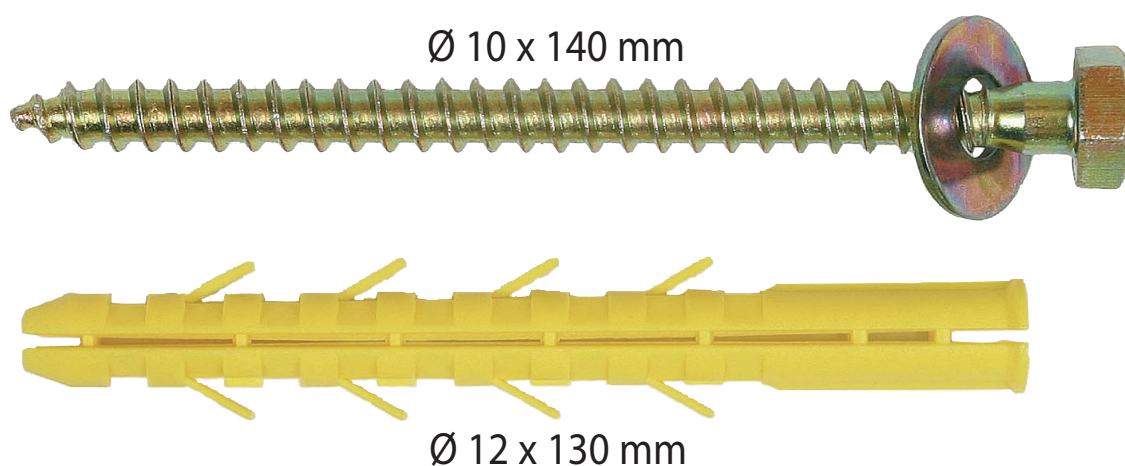


- ▶ Quick and easy : Drill, hammer, done !
- ▶ Reinforced strike zone
- ▶ All materials
- ▶ Drill hole **Ø 8 mm**
- ▶ Colour : white
- ▶ 100% nylon - Polyamide 6

CUSTOM'S CODE : 39269097

FIXING KIT

FIXING KIT

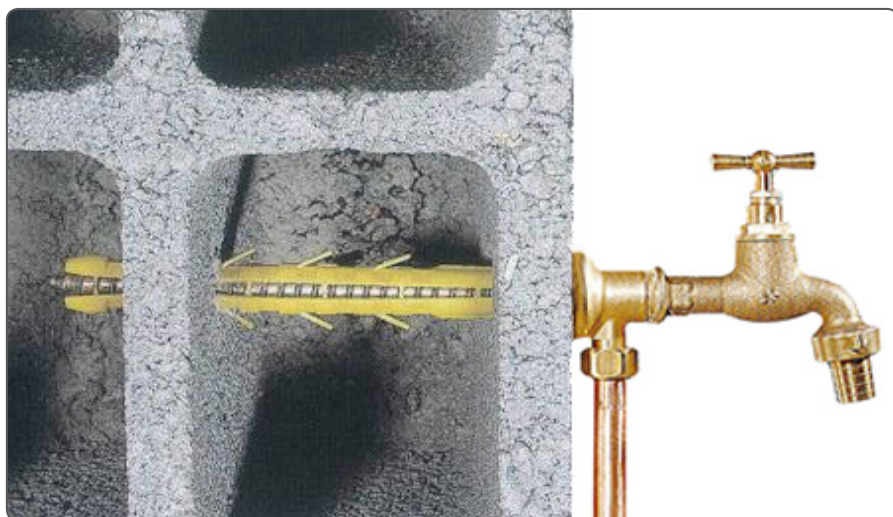
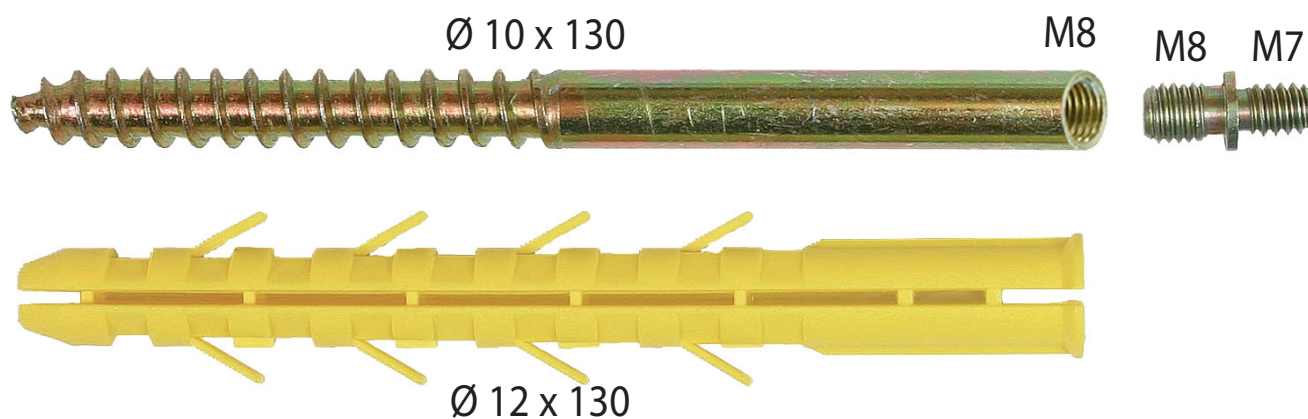


- Ideal for hollow materials
- Lag screw with yellow galvanised finish
- Complete expansion
- Quick and easy : Installation through the part to be affixed
- The plug expands into the concrete block cells
- Available colours : grey, yellow, brown
- Uses : air conditioning units, satellite dish, joist hanger...

CUSTOM'S CODE : 73181100

WALL PLUG FOR TAP

FIXING FOR MOUNTING A TAP IN HOLLOW MATERIALS

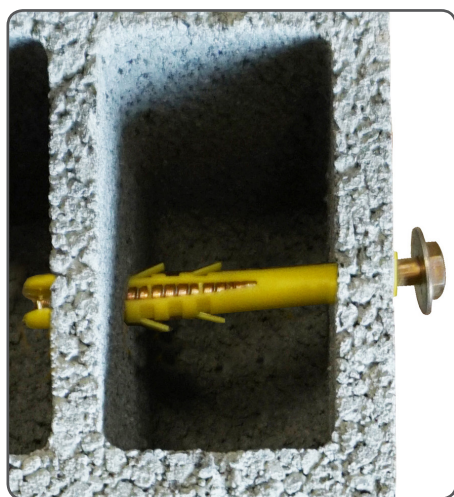
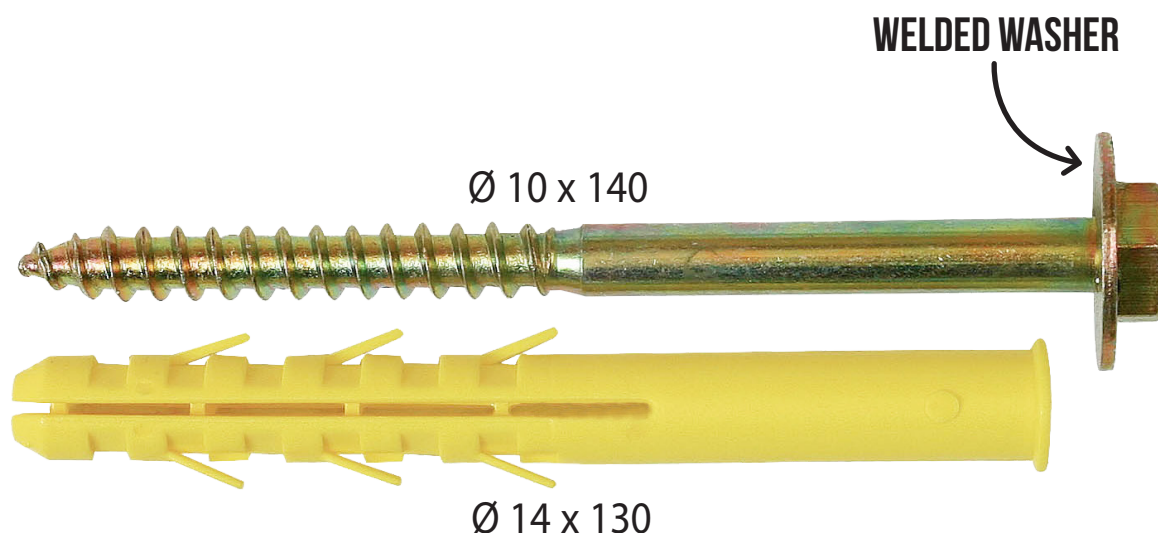


- ▶ Double-threaded screw with yellow zinc plating
- ▶ Nuts and washers supplied
- ▶ Quick and easy !
- ▶ The plug expands into the concrete block cells
- ▶ Wall plug 100% nylon - Polyamide 6
- ▶ Anti-rotation lugs

CUSTOM'S CODE : 73181290

WALL PLUG FOR WATER HEATING SYSTEM

FIXING FOR WATER HEATING SYSTEMS IN HOLLOW MATERIALS

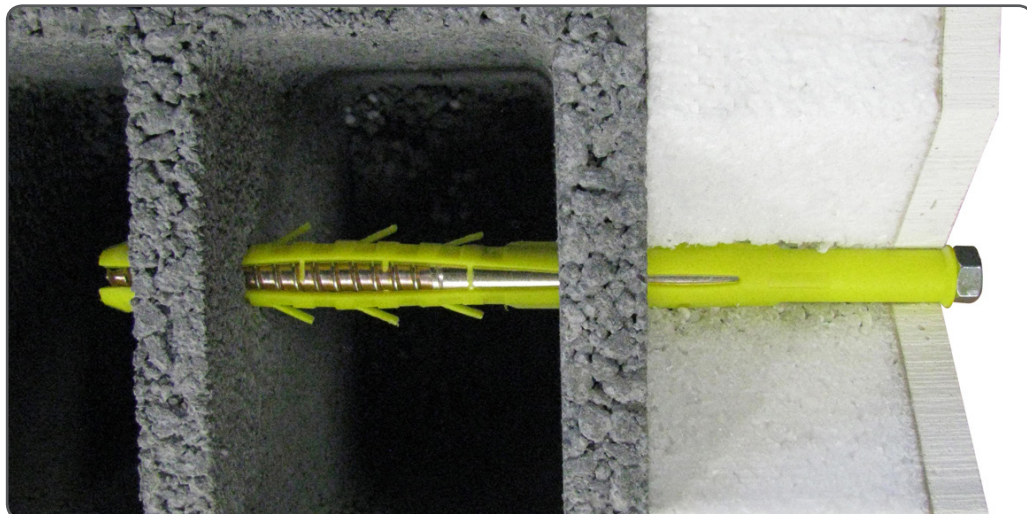
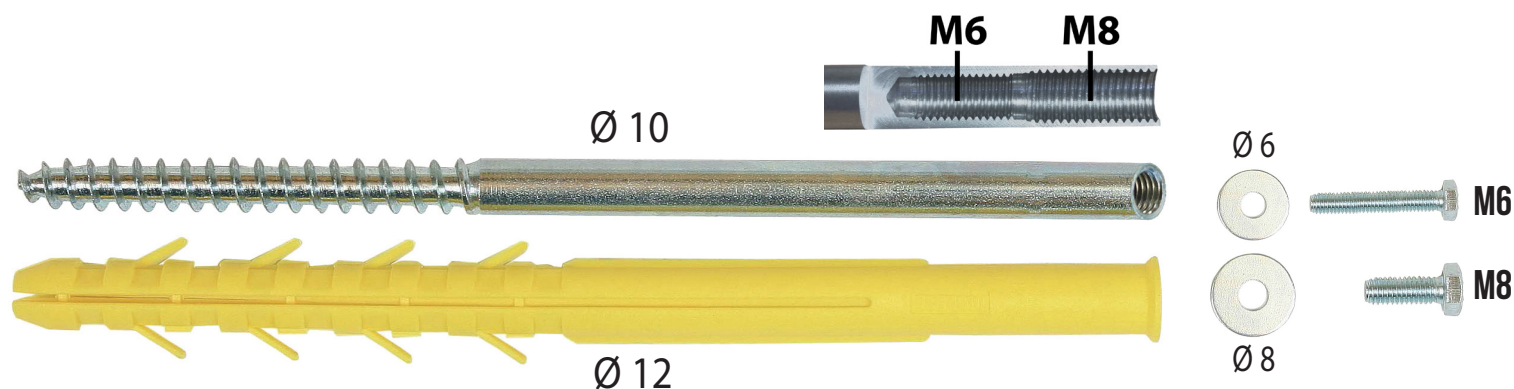
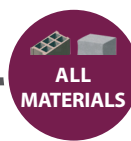


- Advice for use : tilt the fixing for greater resistance
- Drill hole **Ø 14**
- Welded washer : the washer does not go behind the foot of the water heating system
- The plug expands into the concrete block cells
- Wall plug 100% nylon - Polyamide 6

CUSTOM'S CODE : 73181100

M6 AND M8 UNIVERSAL FIXING

FOR PLASTERBOARD + INSULATION LINING



- Ideal for heavy loads on substrates with a plasterboard and insulation lining
- The plug expands into the concrete block cells
- The washer avoids the crush of the plaster board when tightened
- Wall plug 100% nylon - Polyamide 6
- Anti-rotation lugs
- Quick and easy : Installation through the part to be affixed

Ø x L (mm)

Ø 12 x 200

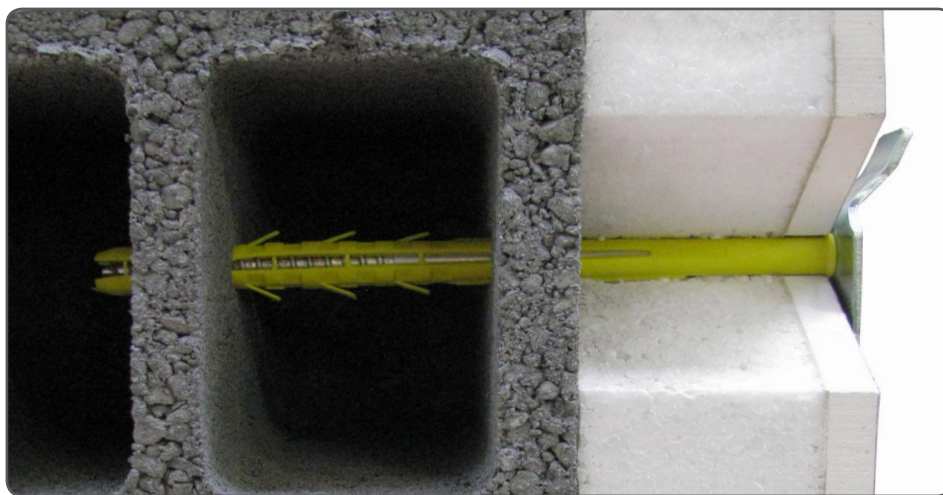
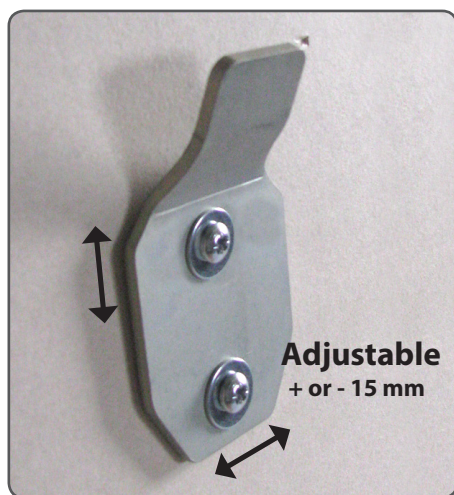
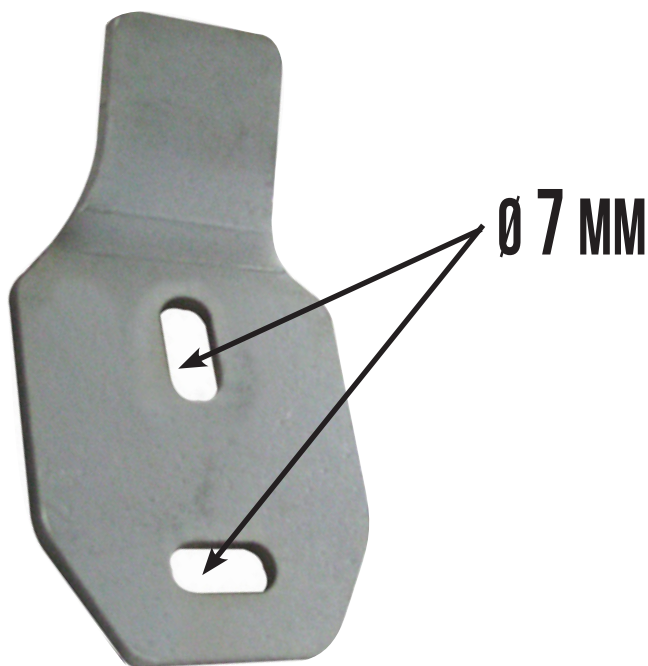
Ø 12 x 240

CUSTOM'S CODE : 73181290

WALL PLATE FOR SANITARY FITTINGS



WALL PLATE FOR FIXING SANITARY FITTINGS



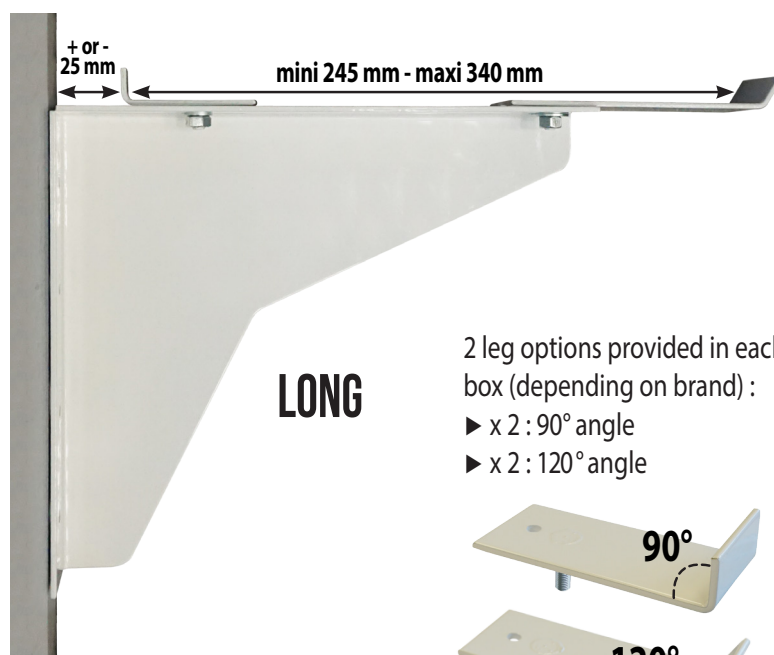
- ▶ Any material : adapt the fixing based on the substrate
- ▶ White zinc plating
- ▶ Drill holes **Ø7 mm**
- ▶ Can be adjusted via **2** slots
- ▶ Very good hold : only **2** holes

CUSTOM'S CODE : 73269098

ADJUSTABLE SINK BRACKETS FOR COLLECTIVE WASH BASIN

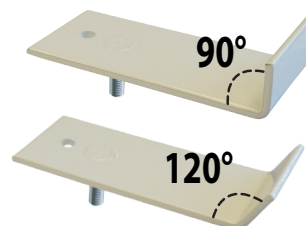


STANDARD & LONG VERSION



2 leg options provided in each box (depending on brand) :

- ▶ x 2 : 90° angle
- ▶ x 2 : 120° angle

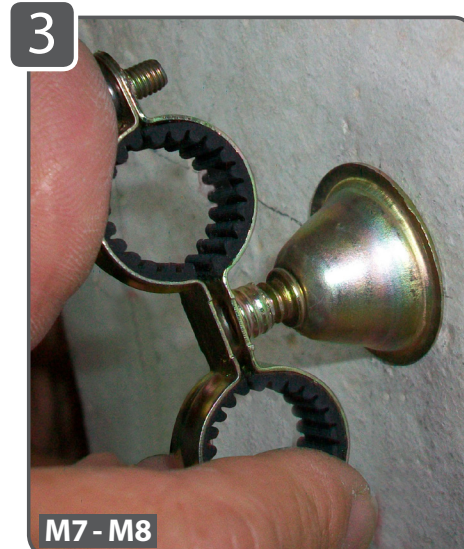
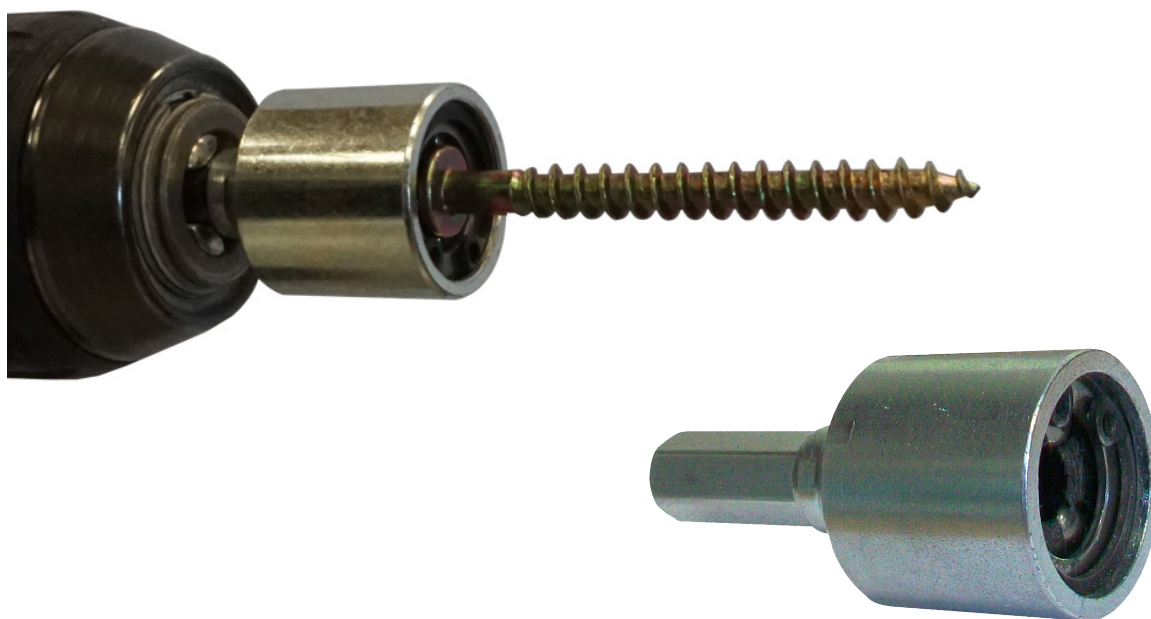


- ▶ Coated in white epoxy paint
- ▶ Adapt the fixing depending on the substrate
- ▶ Adapts to any collective wash basin
- ▶ Adjustable length :
 - Standard sink brackets : **180 mm to 255 mm**
 - Long sink brackets : **245 mm to 340 mm**
- ▶ Each box contains : **2 x 90°** corner brackets, **2 x 120°** corner brackets

CUSTOM'S CODE : 72169180

IZY 7-8-10[®]

SETTING TOOL FOR M7, M8 AND M10 DOUBLE THREAD SCREWS



- ▶ Time savings
- ▶ Facilitates the installation of double thread screws
- ▶ Does not damage the screw thread
- ▶ The double thread screws grips the tool itself

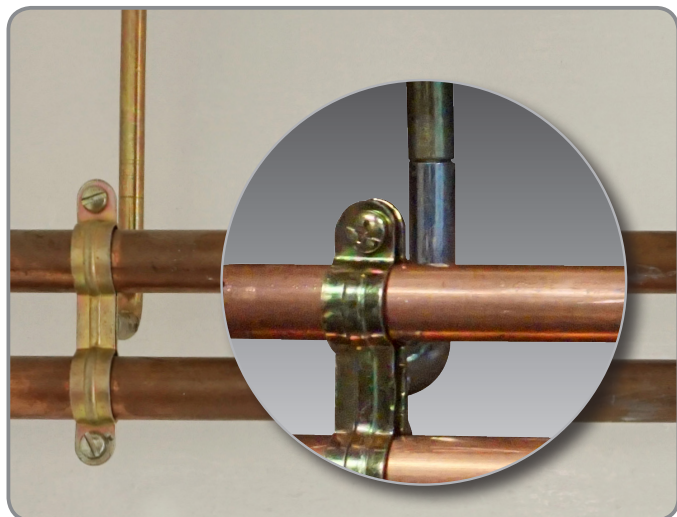
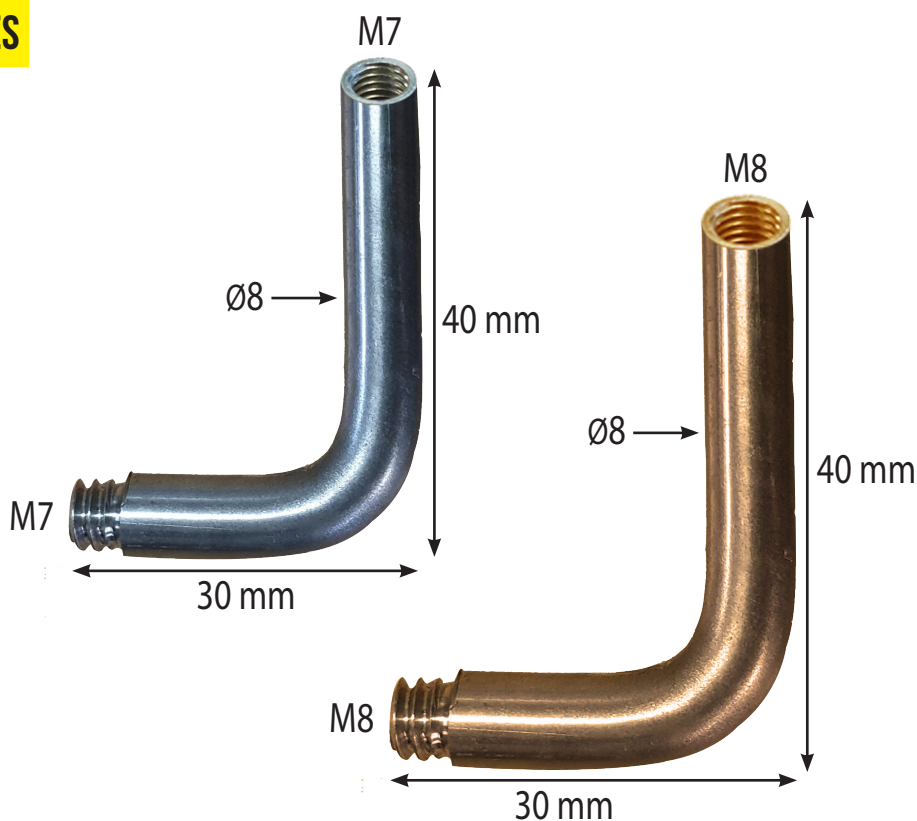


CUSTOM'S CODE : 82055980

M7 AND M8 ELBOW



FOR FIXING PIPES



- Height **40 mm** x width **30 mm**
- **Ø 8 mm**
- Available with yellow or white zinc plating
- Enables pipes to be positioned upright
- Enables branching

CUSTOM'S CODE : 73079290

PIPE NIPPLE FITTING



COMPLETE RANGE

MALE - MALE

Thread	Conditioning	Finish
Male M6 - Male M7	Bag of 10	Yellow zinc plated
	Box of 100	



Thread	Conditioning	Finish
Male M6 - Male M8	Bag of 10	Yellow zinc plated
	Box of 100	



Thread	Conditioning	Finish
Male M7 - Male M7	Bag of 10	Yellow zinc plated
	Box of 100	



Thread	Conditioning	Finish
Male M7 - Male M8	Bag of 10	Yellow zinc plated
	Box of 100	



Thread	Conditioning	Finish
Male M8 - Male M8	Bag of 10	Yellow zinc plated
	Box of 100	



MALE - FEMALE

Thread	Conditioning	Finish
Male M7 - Female M6	Bag of 10	White zinc plated
	Box of 100	



Thread	Conditioning	Finish
Male M7 - Female M8	Bag of 10	Yellow zinc plated
	Box of 100	



Thread	Conditioning	Finish
Male M7 - Female M8	Bag of 10	White zinc plated
	Box of 100	



Thread	Conditioning	Finish
Male M8 - Female M7	Bag of 10	White zinc plated
	Box of 100	



Thread	Cond	Finish
Male - Female length 15 mm	Bag of 10	White zinc plated
	Box of 100	

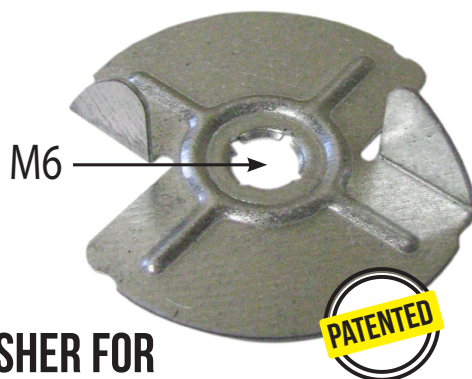


CUSTOM'S CODE : 73181900

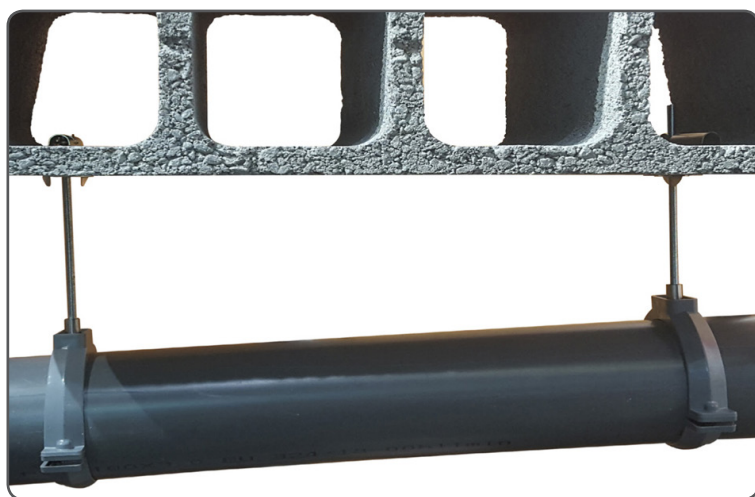
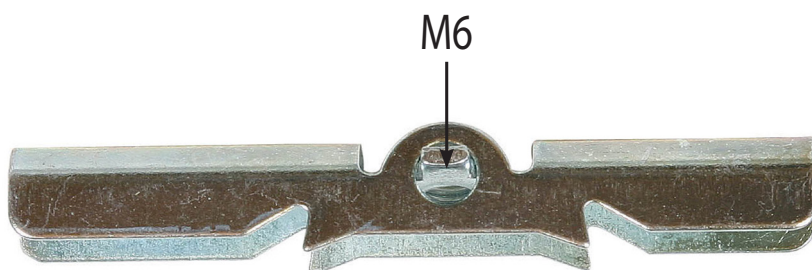


M6 QUICK-FIX WASHER + TOGGLE BOLT

FOR MOUNTING DRAINAGE PIPES



WASHER FOR
TOGGLE BOLT



► Fixing details :

- M6 toggle bolts
- M6 quick-fix nut
- Male M7/female M6 pipe nipple fittings

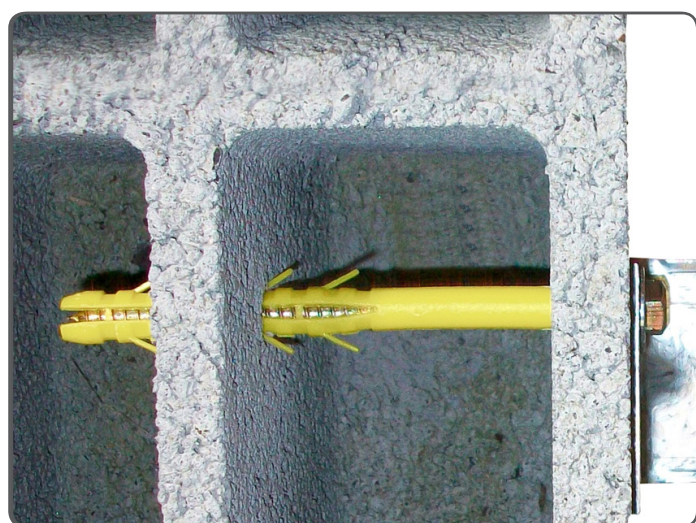
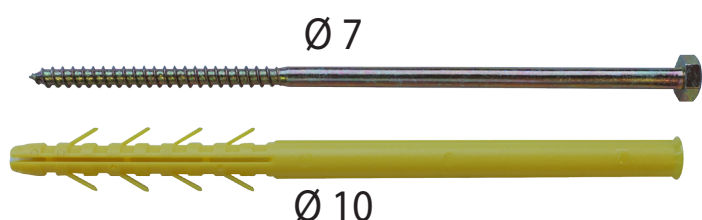
CUSTOM'S CODE : 73269098

LAG SCREW HEXAGONAL HEAD WITH NYLON PLUG



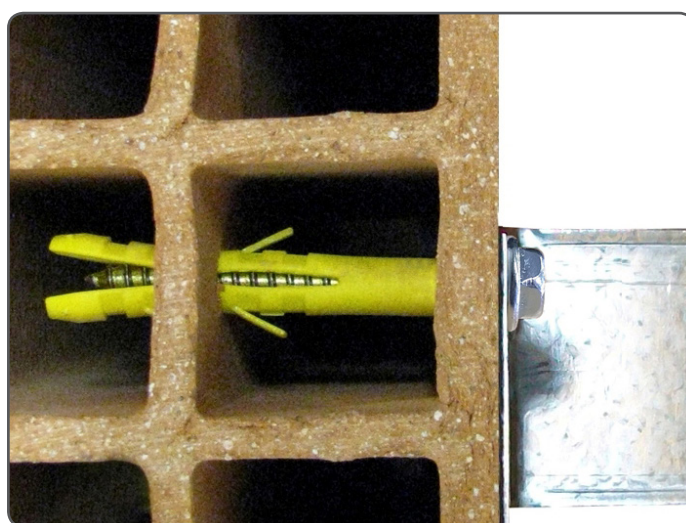
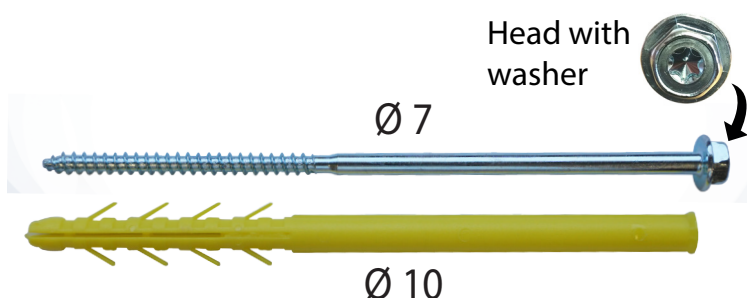
CQLT WALL PLUG

LONG WALL PLUG WITH HEX HEAD LAG SCREW



CQLT-R WALL PLUG

LONG WALL PLUG WITH HEX HEAD LAG SCREW - TORX DRIVE



- Double-threaded screw with white zinc plating
- Quick and easy : Installation through the part to be affixed !
- The plug expands into the concrete block cells
- Does not crush the plasterboard when tightened
- Anti-rotation lugs
- Wall plug 100% nylon - Polyamide 6
- Uses : mounting brackets, cladding, radiator feet etc...

CQLT Ø x L (mm)	CQLT-R Ø x L (mm)
Ø 10 x 80	Ø 10 x 80
Ø 10 x 100	Ø 10 x 100
Ø 10 x 120	Ø 10 x 120
Ø 10 x 140	Ø 10 x 140
Ø 10 x 160	Ø 10 x 160
Ø 10 x 200	Ø 10 x 200
Ø 10 x 240	
Ø 10 x 280	

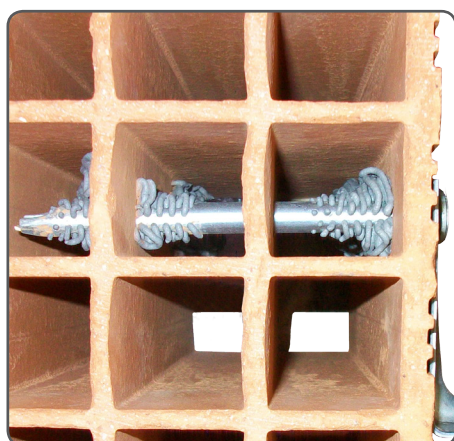
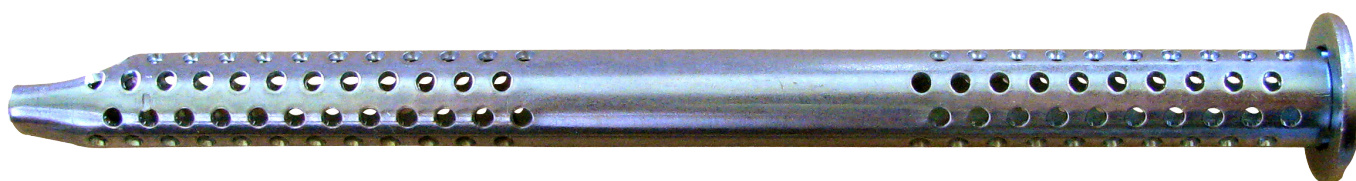
CUSTOM'S CODE : 73181290

CLOU RÉSINE[®] - PERFORATED STEEL SLEEVE

RESIN ANCHOR FOR FIXING IN HOLLOW MATERIALS



New generation of anchors !



- ▶ Resin anchor in concrete blocks and hollow bricks
- ▶ Maximum thickness of the part to be anchored : **2 mm**
- ▶ For use with our DI resin
- ▶ Drill hole **Ø10 mm**
- ▶ Two to three times the hold of a wall plug for a joist hanger
- ▶ No more threaded rods, washers and nuts! It is the head of the perforated sleeve that locks it in place (it is not a resin injection anchor sleeve but a fixing)
- ▶ Drill hole and fixing by way of a joist hanger
- ▶ Extra-flat head : no need to cut into the purlin
- ▶ Uses : joist hangers, angle brackets for cladding, cladding rails, garage doors, windows etc...



Allows you to hang
cartridges on pins

D.I. RESIN

POLYESTER RESIN

CUSTOM'S CODE : 73182400

CEILING HANGER BOLT

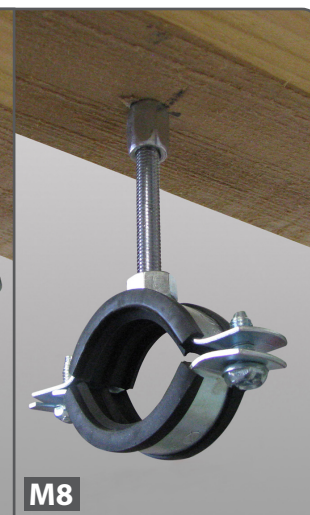
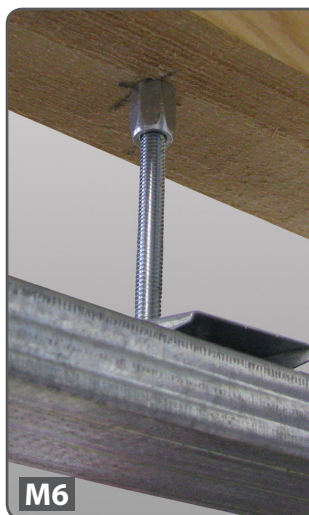
THREADED ROD HANGER

WOOD

M6
M7
M8



KG
70 kg*



- ▶ Setting tool : Hex socket, **10 mm**.
- ▶ * Permissible load : **70 kg** (factored load with a safety coefficient of 3)
- ▶ Can be screwed directly into wood
- ▶ No wall plug required : quick and economical installation
- ▶ Any material : adapt the wall plug
- ▶ Uses : plasterboard ceilings, light fittings, cable trays, suspended ceilings, air-conditioning units, mechanical controlled ventilation, sanitary pipe clamps, heavy-duty pipe clamps etc...

CUSTOM'S CODE : 7318130090

RAPIDO®

SUSPENSION SYSTEM DIRECTLY INTO CONCRETE

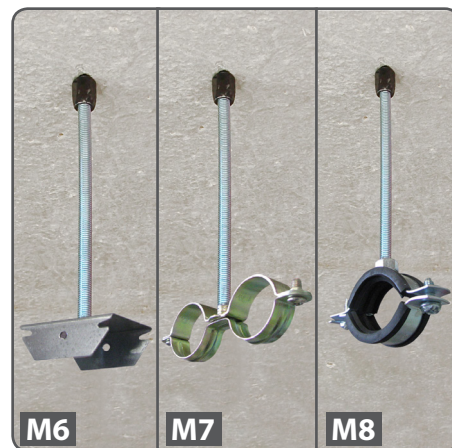
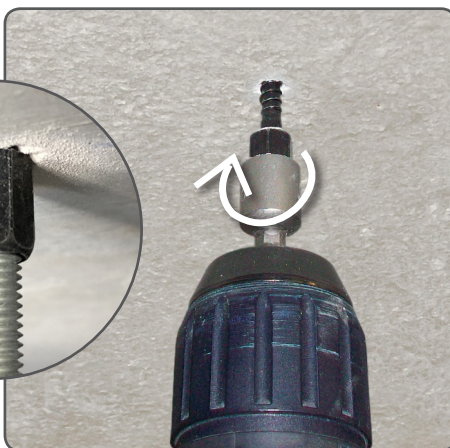


KG
100 kg*

ø 6 mm

NEW

M6
M7
M8



- ▶ Reduced drilling diameter : time savings
- ▶ Setting tool : Hex socket, **10 mm**
- ▶ Driver adjustment : high torque/low speed
- ▶ Not to be used with an impact wrench
- ▶ * Permissible load : **100 kg** (factored load with a safety coefficient of 3)
- ▶ Uses : plasterboard ceilings, light fittings, cable trays, suspended ceilings, sanitary pipe clamps, heavy-duty pipe clamps, air-conditioning units, mechanical controlled ventilation etc...

CUSTOM'S CODE : 73181290

SPEEDY-FIX[®]

HANGER FOR USE DIRECTLY IN CONCRETE

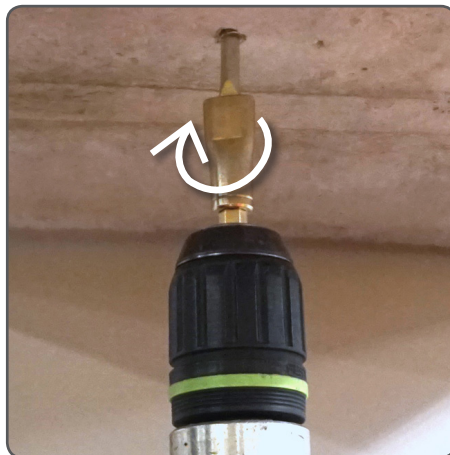


ø 5 mm

ø 5,5 mm



TOOL FOR
SPEEDY-FIX[®]



- ▶ Setting tool supplied
- ▶ Drill hole **ø 5 mm**
- ▶ Driver adjustment : high torque/low speed
- ▶ Not to be used with an impact wrench
- ▶ * Permissible load : **100 kg** (factored load with a safety coefficient of 3)
- ▶ Thread length : **32 mm**
- ▶ Eyelet diameter : **5.5 mm**
- ▶ Can be used to suspend chains, steel wires, hooks, carabiners, cables, unthreaded rods, cable trays etc...

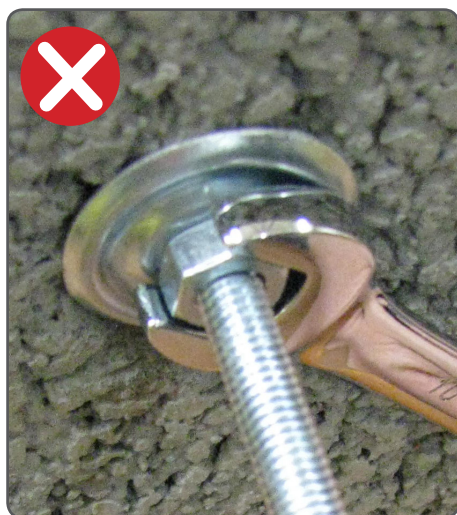
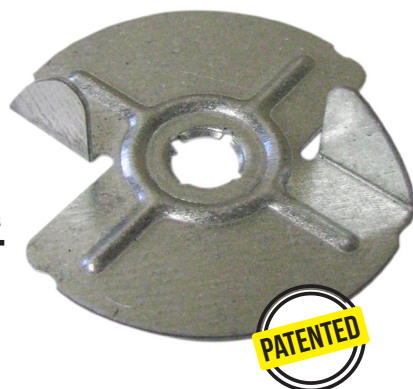
CUSTOM'S CODE : 73181290

M6 QUICK-FIX WASHER + TOGGLE BOLT

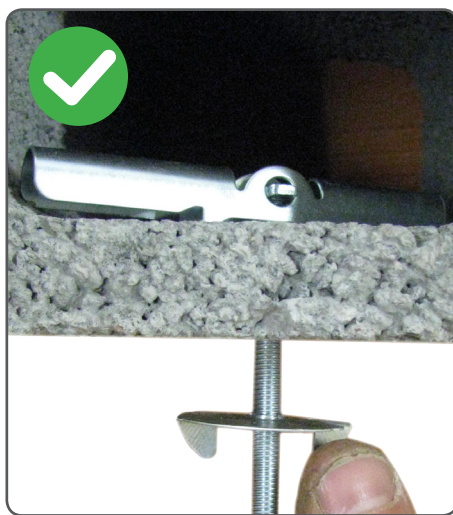
TOGGLE BOLT + QUICK-FIX WASHER FOR SUPPORTING THREADED ROD



WASHER FOR
TOGGLE BOLT



Before : 3 tools : wrench, washer and nut



Now : just 1 tool : with thread

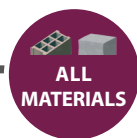


- ▶ Hole \varnothing 18 mm
- ▶ Maximum load : 20 kg
- ▶ M6 quick-fix washer for toggle bolt : M6 threaded washer, suitable for use brick and plasterboard
- ▶ The toggle bolt automatically locks into the cavity when the long part of the toggle bolt is moved upwards

CUSTOM'S CODE : 73261910

FIX-RAIL

RAIL FIXING FOR USE IN ALL MATERIALS



Ø 6 mm

1



2



3



- ▶ Quick and easy : Drill, hammer, done !
- ▶ 100% nylon - Polyamide 6
- ▶ Colour : grey
- ▶ Drill hole Ø 6 mm

CUSTOM'S CODE : 39269097

FIX-ASPHALT®

RESIN ANCHOR FOR ASPHALT



Allows you to hang
cartridges on pins

MP+ RESIN

**VINYLESTER RESIN
STYRENE-FREE**

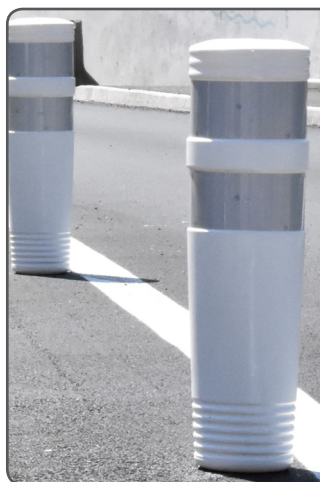


M8 : Ø 12 mm

M10 : Ø 14 mm

M12 : Ø 16 mm

Threading	Ø x L (mm)
M8	10 x 70
M10	12 x 70
	12 x 100
	14 x 100
M12	14 x 70
	14 x 100



- ▶ Female double-threaded screw
- ▶ Available in M8, M10 and M12 - lengths : **70 mm** and **100 mm**
- ▶ For use with our MP+ resin
- ▶ Screw length : thickness to be anchored + **15 mm**
- ▶ Uses : removable Parking barriers, retarders, bollards, shelters, road signs, signage indicating underground networks, playgrounds, gate operating systems etc...



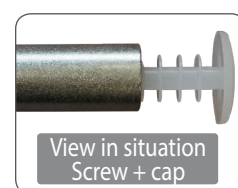
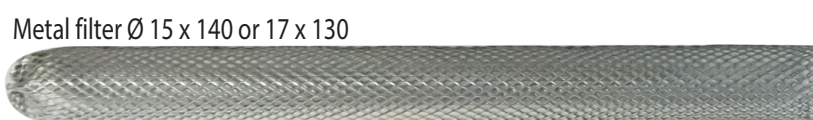
CUSTOM'S CODE : 73181900

FIX-STORE®

RESINE ANCHOR FOR HOLLOW MATERIALS



+ POSSIBILITY WITH INSULATION !



- Steel and stainless-steel finishes
- Female double-threaded screw
- Contents : Female double-threaded screw + hex head screw + metal resin injection anchor sleeve + washer + cap to protect the threading + setting tool for the resin injection anchor sleeve
- Anchoring across several cells in the concrete block
- Removable
- Uses : heavy fixings in hollow materials : awnings, verandas, barriers, guardrails, satellite dishes etc...



CUSTOM'S CODE : 73181290



ACCESSORIES FOR RESIN ANCHOR



1

METALLIC SLEEVE



Ø x L (mm)
15 x 85
15 x 130
17 x 130



INSTALLATION TOOL PROVIDED

2

CENTRING DEVICE FOR RESIN ANCHORING



For centring the part
to be fixed in the hole
when sealing

3

EXTENSION FOR MIXING NOZZLE

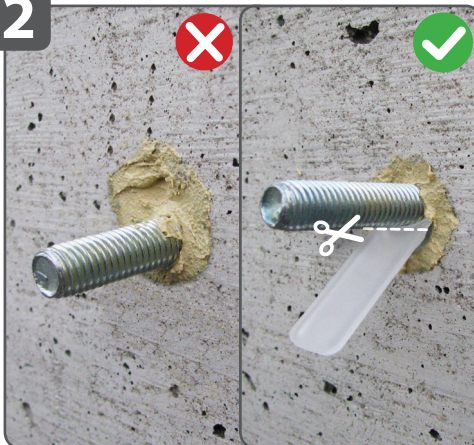


L (mm)
250
400
800

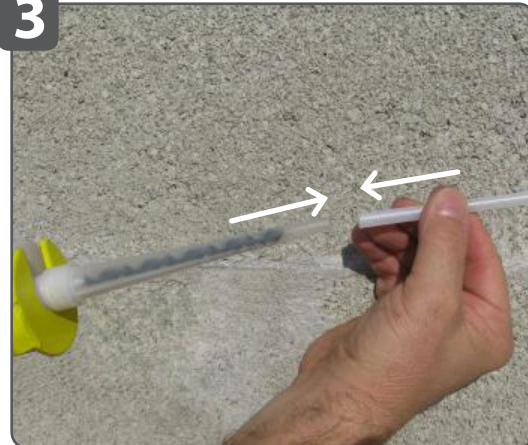
1



2



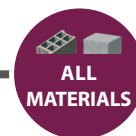
3



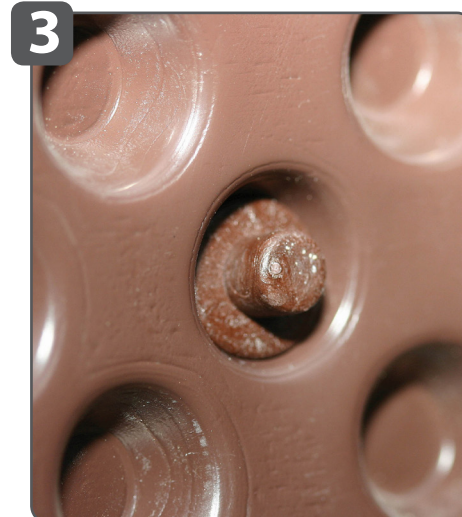
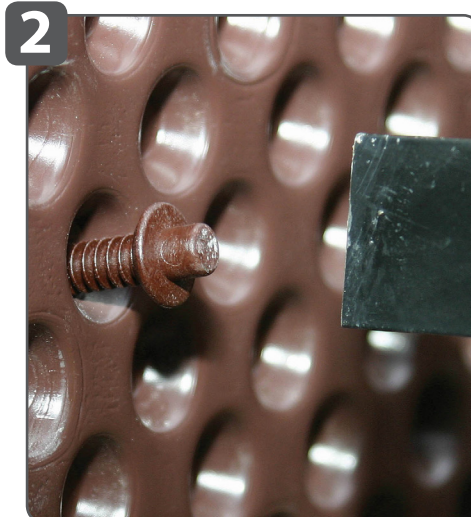
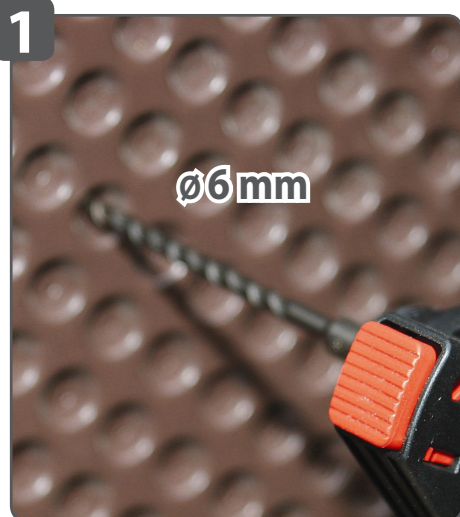
- **Metallic sleeve** : more resistant anchoring than with a plastic resin injection anchor sleeve
- **Centring device for resin anchoring** : once the resin has cured, cut the tongue of the centring device
- **Extension for mixing nozzle**

ISOL-FIX[®]

FIXING FOR CAVITY DRAIN MEMBRANE



Ø 6 mm



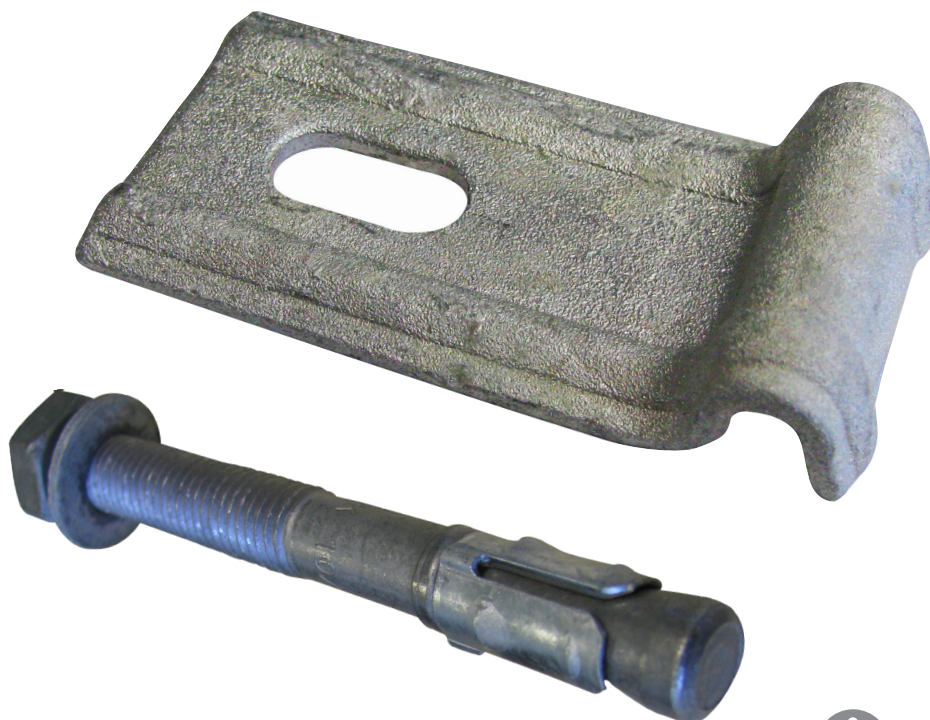
- ▶ Quick and easy : Drill, hammer, done !
- ▶ Preserves the impermeability of cavity drain membrane
- ▶ One advantage is that it replaces steel studs : less waste and better hold over time (no corrosion)
- ▶ 100% nylon - Polyamide 6
- ▶ Colour : brown
- ▶ Drill hole **Ø6 mm**



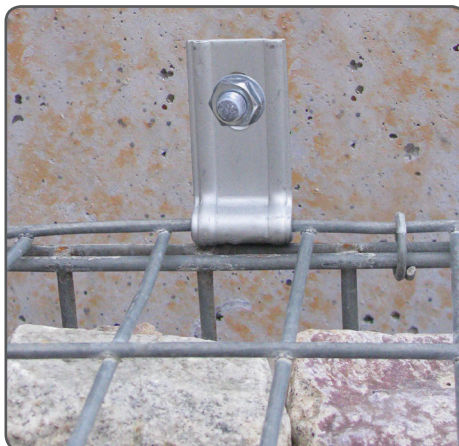
CUSTOM'S CODE : 39269097

FIX-GABION

GABION FIXING



**+ AVAILABLE IN
DOUBLE VERSION**



- Galvanised finish
- Galvanised expansion anchor bolt $\varnothing 8 \times 70$ supplied (wall plate for gabion fixing not included)

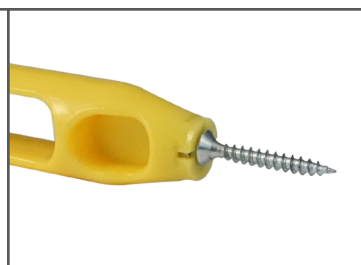
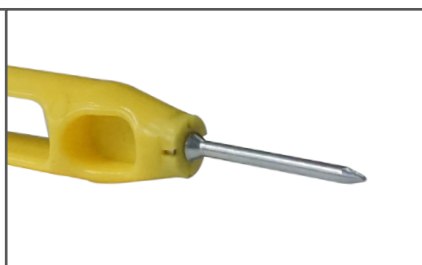
CUSTOM'S CODE : 73269098

PRATICO[®] - MAGNETIC TOOL

MULTI-FONCTION TOOL



Powerful
magnetic tool



- Easy installation !
- Multiple applications : sheet metal edge clips, metallic wall plugs, screws, nuts, steel nails etc...
- Colour : yellow

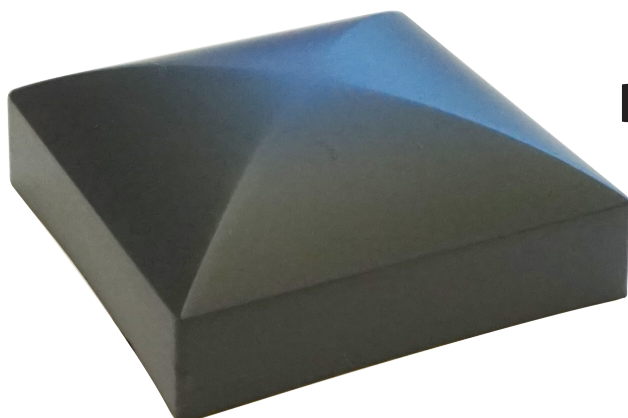
CUSTOM'S CODE : 82055980

CAP FOR WOODEN POSTS

NYLON CAP FOR WOODEN POSTS AND OTHER MATERIALS



GREY
and
BLACK



- ▶ Protects and avoids rotting of woods and other materials
- ▶ Direct screwing through the cap : **no pre-hole required !**
- ▶ Square cap : 100% nylon - Polypropylene
- ▶ Round cap : 100% nylon - Polyethylene
- ▶ Durable over time
- ▶ Aesthetic

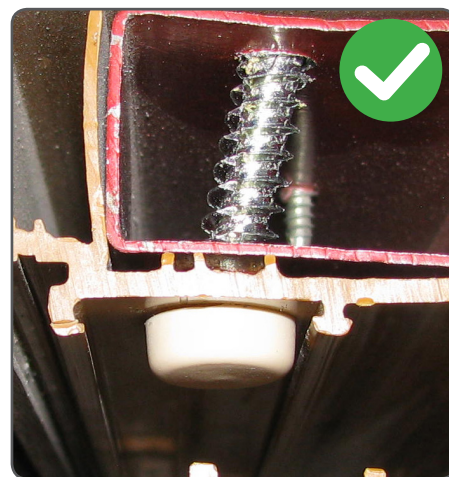
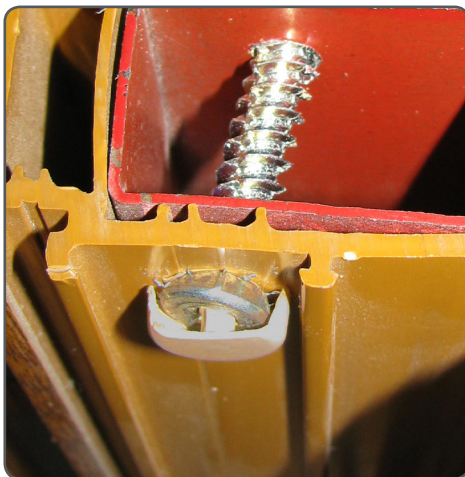
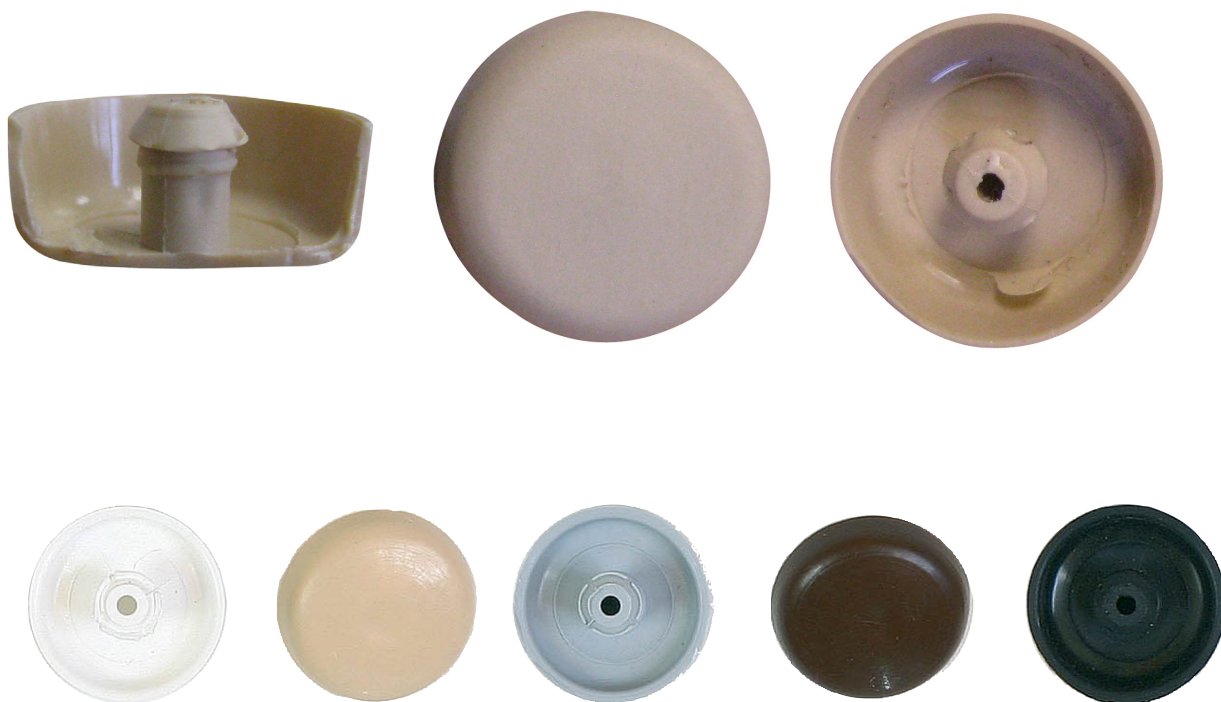


CUSTOM'S CODE : 39269097

SWIVEL CAP FOR CONCRETE SCREW



COMPLETE RANGE



- ▶ Cap for concrete screw with Torx T30 drive
- ▶ Swivel cap, hold guaranteed
- ▶ Available in white, brown, grey, oak, beige and black
- ▶ Cover cap : conceals the head of the screw, even if it is sloped !

CUSTOM'S CODE : 39269097

SWIVEL CAP FOR TOP-ROC SCREWS



COMPLETE RANGE

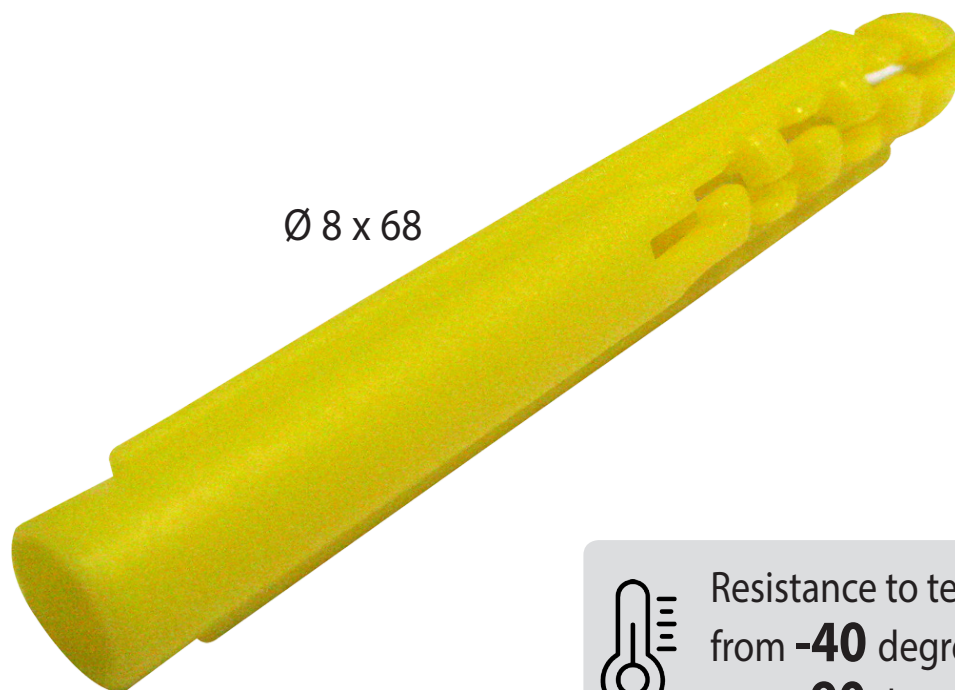


- Swivel cap, hold guaranteed
- Available in white, brown, grey, oak, beige and black

CUSTOM'S CODE : 39269097

WALL PLUG

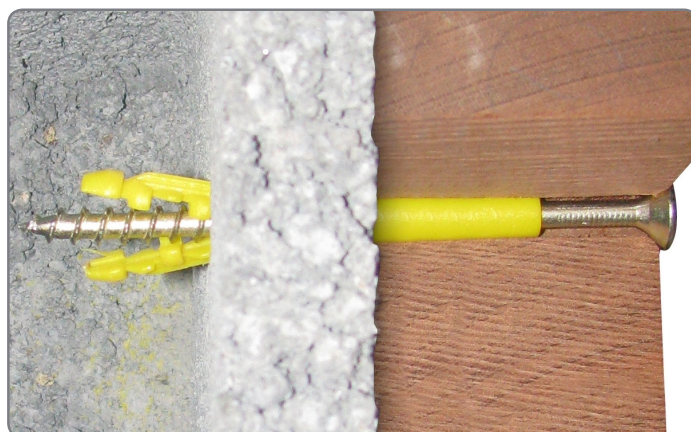
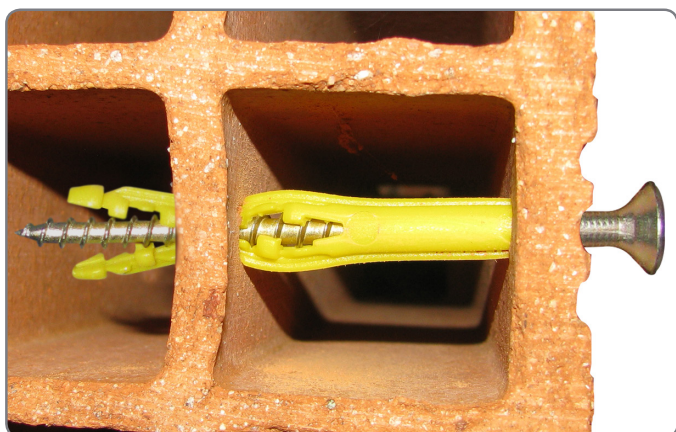
NYLON PLUG Ø 8 X 68 FOR ALL MATERIALS



Ø 8 x 68



Resistance to temperatures
from **-40** degrees °C
up to **90** degrees °C



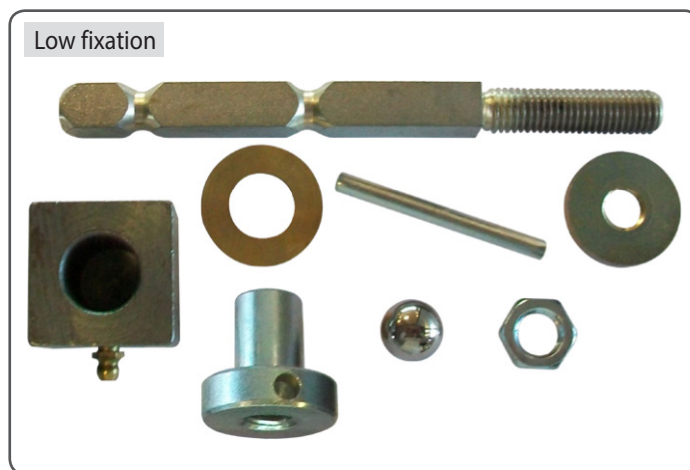
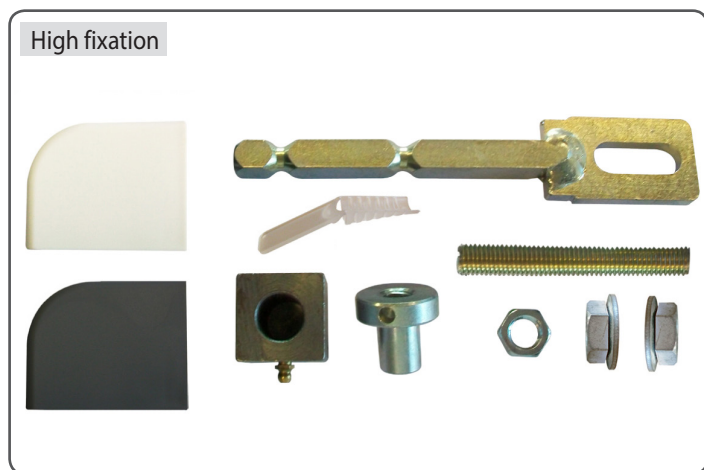
- ▶ 100% nylon wall plug suitable for all materials
- ▶ Drill hole **Ø 8 mm**
- ▶ Anti-rotation lugs
- ▶ Ideal for installing frame brackets
- ▶ Lightweight fixings in any material

CUSTOM'S CODE : 39269097

PIVOT HINGE FOR STEEL GATE WITH STEP



PIVOT HINGE FOR STEEL GATE WITH STEP - TO BE SEALED



- ▶ Permissible load : **150 kg** per leaf
- ▶ Easy to install
- ▶ Very neat lower fixing : no fastener
- ▶ Advantage : the upper bracket is installed and then the gate is mounted
- ▶ UV stable



FOR USE WITH
CHEMICAL RESIN

CUSTOM'S CODE : 73269098

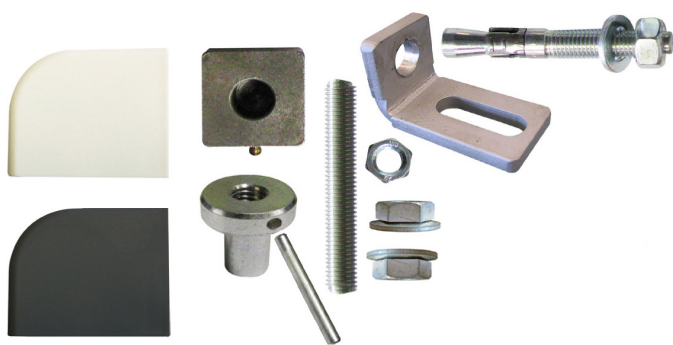
PIVOT HINGE FOR STEEL GATE WITH STEP



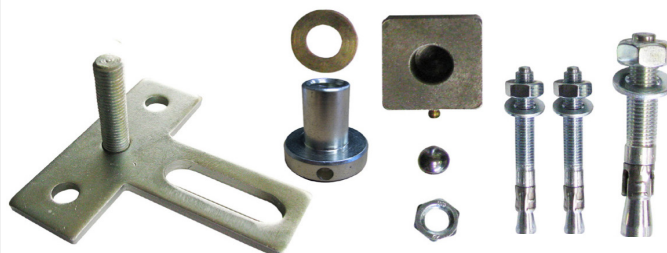
LOWER FIXING, 3 HOLES TO BE ANCHORED



High fixation



Low fixation

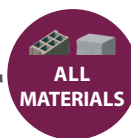


- ▶ Permissible load : **150 kg** per leaf
- ▶ Easy to install
- ▶ Very neat lower fixing : no fastener
- ▶ Advantage : the upper bracket is installed and then the gate is mounted
- ▶ UV stable

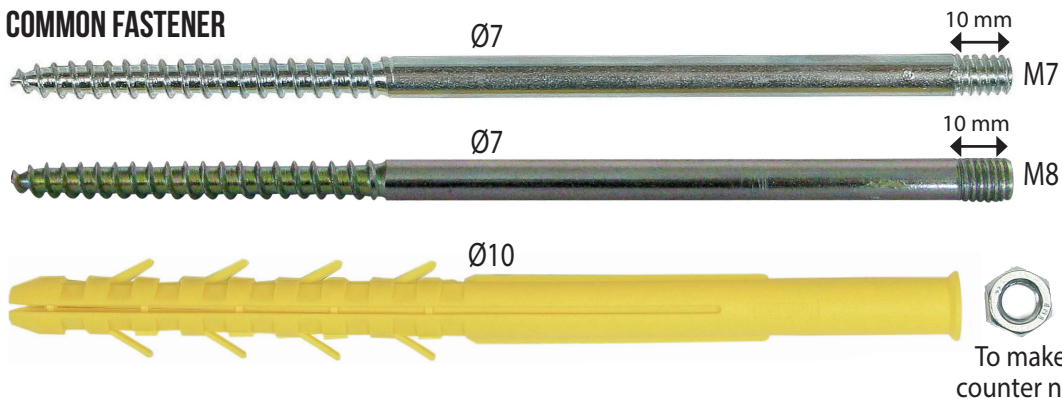
CUSTOM'S CODE : 73269098

GUTTER FIXINGS

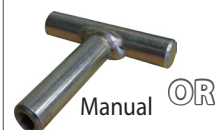
COMPLETE RANGE



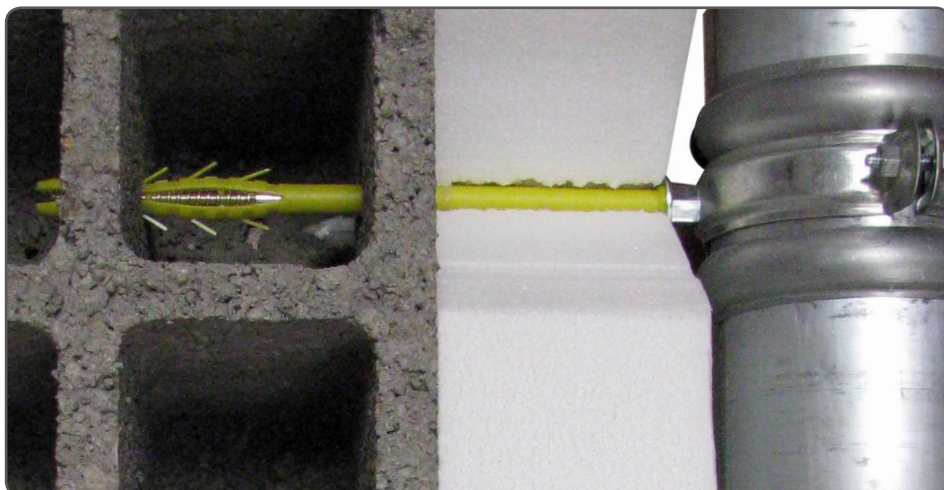
COMMON FASTENER



New : 2 ways to screw :
- manually
- with a screwdriver



ALUMINUM FASTENER



- ▶ Quick and easy
- ▶ Durable
- ▶ All materials and ideal for hollow materials

CUSTOM'S CODE : 73181300

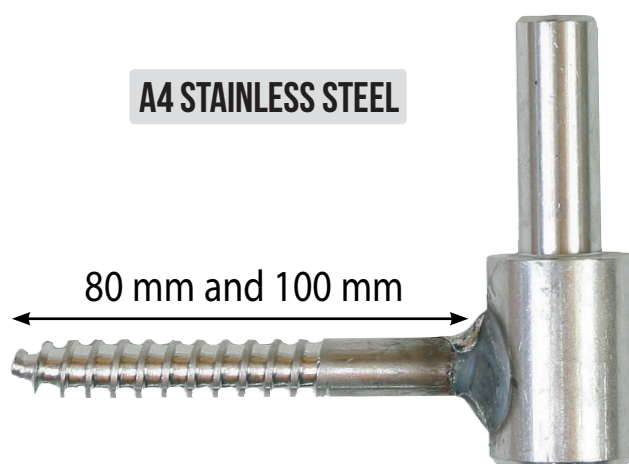
HINGE FOR WOOD

COMPLETE RANGE



Screwdriver Ø x L (mm)	Ø Key (mm)	Finish
10 x 75	Ø12	Black
	Ø14	
12 x 90	Ø16	

Screwdriver Ø x L (mm)	Ø Key (mm)	Finish
10 x 80	Ø14	A4 stainless steel
12 x 100	Ø16	



A4 STAINLESS STEEL



INOX :

- ▶ HIGH QUALITY A4 STAINLESS STEEL
- ▶ WILL NOT RUST : ANTI-CORROSION RESISTANCE
- ▶ IDEAL FOR SEASIDE REGIONS

- ▶ The straight, machined tail is threaded for a more robust connection
- ▶ Pin welded to the body of the hinge

CUSTOM'S CODE : 73269098

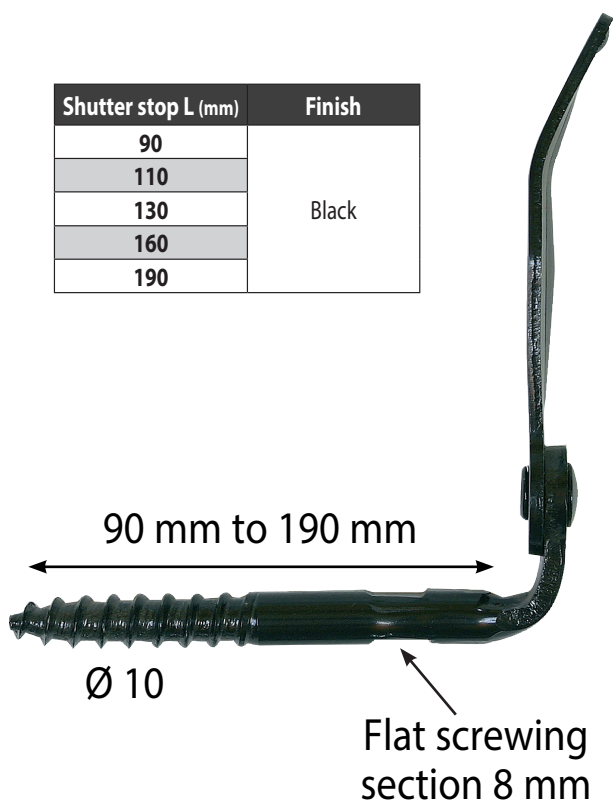


SHUTTER STOP

COMPLETE RANGE



Shutter stop L (mm)	Finish
90	Black
110	
130	
160	
190	



Shutter stop L (mm)	Finish
130	A4 stainless steel

A4 STAINLESS STEEL



INOX :

- ▶ HIGH QUALITY A4 STAINLESS STEEL
- ▶ WILL NOT RUST : ANTI-CORROSION RESISTANCE
- ▶ IDEAL FOR SEASIDE REGIONS

- ▶ Use a wall plug Ø 14
- ▶ Flat screwing section for easy installation

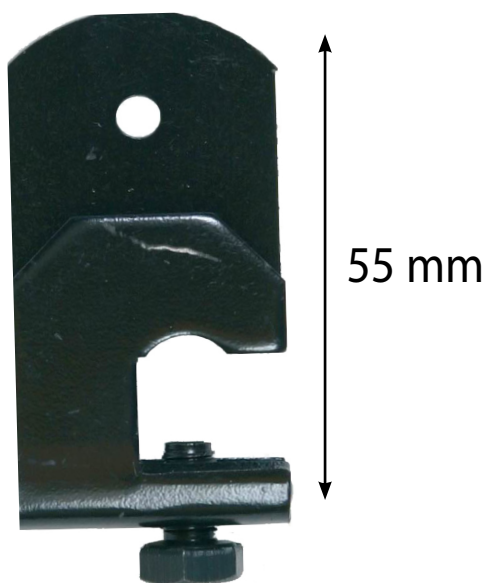
CUSTOM'S CODE : 73269098

UNIVERSAL STOP BLOCK



UNIVERSAL STOP BLOCK FOR SHUTTER

A4 STAINLESS STEEL



- ▶ HIGH QUALITY A4 STAINLESS STEEL
- ▶ WILL NOT RUST : ANTI-CORROSION RESISTANCE
- ▶ IDEAL FOR SEASIDE REGIONS

- ▶ Stops the shutter from flapping
- ▶ Adapts to any type of shutter
- ▶ Height : **55 mm**

CUSTOM'S CODE : 73269098



HEADLESS LAG SCREW ROUGH



COMPLETE RANGE



BAR-TURNING THREAD

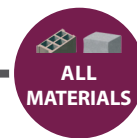


WE PRODUCE A WIDE RANGE OF HEADLESS
LAG SCREWS FROM Ø5 TO Ø14

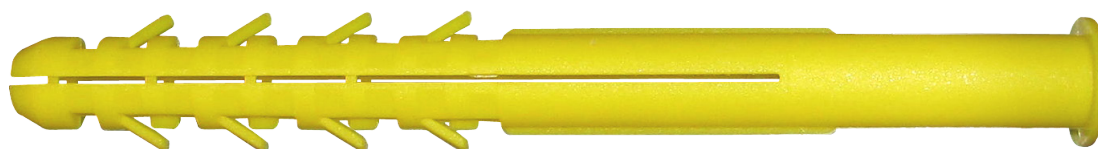
Our production !

CUSTOM'S CODE : 73181290

NYLON PLUG



COMPLETE RANGE



Ø (mm)	L (mm)
10	80
	100
	110
	120
	160
	200

Ø (mm)	L (mm)
12	130
	200
	240

Ø (mm)	L (mm)
14	135

Ø (mm)	L (mm)
16	140
	160
	200
	240
	300
	350

Ø (mm)	L (mm)
18	350
	400



AVAILABLE IN YELLOW,
BLACK AND GREY VERSION

CUSTOM'S CODE : 39269091

PLASTIC BOX

COMPLETE RANGE



Reusable and
recyclable box



- ✓ PLASTIC BOX : ESTHETIC
- ✓ CUSTOMIZABLE LID : SEVERAL COLOURS OR TRANSLUCENT FINISH
- ✓ FRENCH MANUFACTURE : SOLIDITY
- ✓ STACKABLE BOXES



I.N.G. FIXATIONS

FRENCH INVENTOR AND MANUFACTURER *since 1985 !*

Headoffice and production site :

Z.I. de Chassende
BP 90168
43005 Le Puy-en-Velay Cedex
FRANCE

Production site :

Z.I. de la Borie 2
43120 Monistrol-sur-Loire
FRANCE

Phone :

+33 (0)4 71 05 59 03

Fax :

+33 (0)4 71 09 35 46

Email :

ing@ingfixations.fr